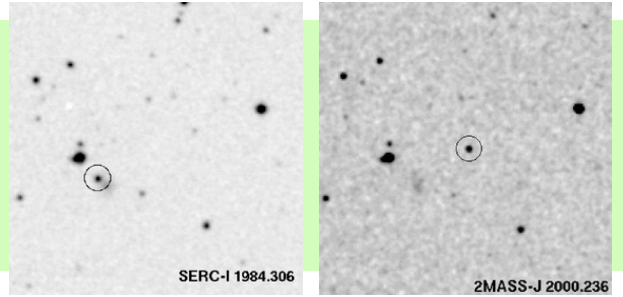


Sébastien Lépine

Ph.D. Physicist, Astronomy & Astrophysics Research Scientist



Current address:

American Museum of Natural History
Central Park West at 79th street
New York, NY 10024
USA

Tel: 212-496-3312

Fax: 212-769-5007

email: lepine@amnh.org

On the web:

<http://research.amnh.org>

/astrophysics/staff/lepine

Scientist and observational astronomer with expertise/interests in:

Low-mass stars and brown dwarfs

Science Education

All-sky surveys (astrometric, photometric)

Data Mining

Search for extra-solar planets

Galactic structure and evolution

Double/multiple stars

Stellar spectroscopy

Career Experience

Senior Research Scientist, American Museum of Natural History — 2000-current :

New York, NY. - Externally funded research programs in stellar and Galactic astronomy. Supervision of undergraduate interns. Mentoring activities with high school students. Consultant on the Hayden Planetarium space shows.

On-line Professor, National Center for Science Literacy — 2008-current :

New York, NY. - Online professor for a course on the Solar System. Course specifically addressed to science educators (elementary / middle-school / high-school teachers). Emphasis on understanding basic concepts in physics and astronomy, guidance in developing K-12 science curriculum, familiarization with on-line resources.

Postdoctoral research fellow, Space Telescope Science Institute — 1998-2000

Baltimore, MD. - Development of a code to identify variable and moving objects in multiple epoch scans from the STScI Digitized Sky Surveys. Design and initial work on an all-sky proper motion survey (the SUPERBLINK survey).

Assistant professor, Saint-Laurent College — 1998

Montreal, QC. - Development and teaching of a second year Physics college course on electrostatics and electromagnetism. Lectures and labs. (Saint-Laurent College is in the Quebec CEGEP network, equivalent to a U.S. community college).

Teaching assistant, University of Montreal — 1994-1997

Montreal, QC. - Responsible for 2-hour/week lectures and blackboard problem solving, plus correction of weekly homeworks. Classes taught: quantum mechanics, special relativity, classical mechanics, general astronomy for science majors.

Education :

1998: Ph.D. in Physics, University of Montreal, Montreal, Qc, Canada

1993: B.Sc. in Physics, University of Montreal, Montreal, Qc, Canada

Research Grants Awarded:

\$160,000 - National Aeronautics and Space Administration (NASA), Hubble Space Telescope Grant (2010-2011)

(P.I.) - Hubble Space Telescope cycle 18 AR program. "The Metallicity Fraction and Period Distribution of Nearby Disk and Halo Stars" (Archival Research program).

\$905,328 - National Aeronautics and Space Administration, Education Grant (2009-2012)

(Co-I.) - Science Research Mentoring Program (SRMP), development of an after-school program in astrophysics and space sciences, combined with research internships. For children from under-represented minorities / low-income families, grades 9-12.

\$564,000 - National Science Foundation (NSF), Astrophysics Grant (2009-2013)

(P.I.) - Astrophysics grant AST-0908406 : "Collaborative Research: Nearby M Stars as High-Priority Targets for Exoplanet Searches."

\$16,000 - National Aeronautics and Space Administration (NASA), JPL grant (2009)

(P.I.) - NASA-Keck program: "A search for stellar/substellar companions to low-mass, halo stars."

\$45,000- National Aeronautics and Space Administration (NASA), GALEX grant (2009-2010)

(P.I.) - GALEX cycle 5 GI project. "A systematic search for nearby white dwarfs in the GALEX archive: positions and motions of 100,000 disk and halo white dwarfs".

\$90,000- National Aeronautics and Space Administration (NASA), Hubble Space Telescope grant (2009-2010 / Cycle 17)

(P.I.) - Hubble Space Telescope cycle 17 GO program. "A search for astrometric companions to very low-mass, Population II stars" (70 HST orbits).

\$325,000 - National Science Foundation (NSF), Astrophysics grant (2007-2009)

(P.I.) - Astrophysics grant AST-0607757 : "Positions and motions of 250,000 stars in the Solar Vicinity: stellar contents and dynamical structure of the Galaxy"

\$100,000 - Kalbfleish Research Fellowship (2002-2004)

(P.I.) - For carrying out a research program in the natural sciences at the American American Museum of Natural History: "An all-sky survey of stars within 30 parsecs of the Sun"

Research Grants Awarded (*continued*):

\$188,000 - National Science Foundation (NSF), Astrophysics grant (2000-2002)

(Co-P.I.) - *Astrophysics grant AST-0087313 : "NSTARS: Completing the Inventory of Nearby Stars: An automated all-sky search for high proper-motion stars using the Digitized Sky Survey."*

\$70,000 - Canada-NSERC post-doctoral fellowship

(P.I.) - *Science research fellowship from the Government of Canada (highly competitive, equivalent to a U.S. National Science Foundation postdoctoral fellowship.)*

Scholarships and awards

1999: Academic Gold Medal of the Governor General of Canada

Annually awarded to the one student with the most distinguished record in every major Canadian University. Awarded for most outstanding student at University of Montreal (26,000 full-time students).

1998: First prize for best student presentation, CASCA general meeting

Awarded at the annual general meeting of the Canadian Astronomical Society.

1997-1998: Quebec-FCAR graduate student scholarship

Elite scholarship awarded by the government of Quebec for pursuing and completing doctoral studies in the natural or applied sciences.

1994-1997: Canada-NSERC graduate student scholarship

Elite scholarship awarded by the government of Canada for pursuing graduate studies in the natural sciences (equivalent to an NSF graduate scholarship in the US).

Astronomical Observation expertise:

Over 350 nights of observations on a wide variety of telescopes, including:

- *William M. Keck 10.0-meter Telescope*
- *Cerro-Tololo Interamerican Observatory (CTIO) 4.0-meter Blanco*
- *Kitt Peak National Observatory (KPNO) 3.8-meter Mayall Telescope*
- *Canada-France-Hawaii 3.6-meter Telescope (CFHT)*
- *Lick Observatory 3.0-meter Shane Telescope*
- *MDM Observatory 2.4-meter Hiltner Telescope*
- *Steward Observatory 2.3-meter Bok Telescope*
- *Mont Megantic Observatory 1.6-meter Telescope*
- *MDM Observatory 1.3-meter McGraw-Hill*
- *Kitt Peak National Observatory (KPNO) 0.9-meter Telescope*

Expertise in large-scale astronomical survey programs, including:

- *Low- and medium-resolution spectroscopy in the optical.*
- *High-resolution spectroscopy, including “echelle” spectroscopy.*
- *Astrometric measurements, including proper motions and parallax.*
- *Optical and infrared imaging.*
- *Adaptive optics imaging, including with laser guide star systems.*

Expertise in data-mining / analysis / science programming:

- **Data-mining of large astronomical database**, including the *Digitized Sky Surveys (DSS)*, *two-micron all sky survey (2MASS)*, *Sloan Digital Sky Survey (SDSS)*, *Hubble Space Telescope archive*, *GALEX archive*, etc...
- **Extensive knowledge and experience with large astronomical catalogs** (*Hipparcos*, *Tycho-2*, *USNO-B1.0*, *UCAC-2.0*, *GSC-2.2*, *ROSAT*, *Yale Parallax Catalog*, etc...)
- **Extensive experience with various programming languages**, including *FORTRAN*, *C++*, *IDL*, *SUPERMONGO*.

Synergistic activities in astronomy:

- **Panelist in the Telescope Allocation Committee (TAC)** for the *National Optical Astronomical Observatories (NOAO)*: member of the *Galactic TAC panel*. (2008-2010)
- **Member of the working group on stellar populations** for the planned *Large Synoptic Survey Telescope (LSST)*.
- **Member of LAMOST-PLUS**, a *U.S.-China collaboration on the Large Aperture Multi-Object Spectrograph Telescope* (funded by NSF).

Teaching / supervision experience:**Internet science teacher:**

Internet class on “The Solar System” from the National Center for Science Literacy, guidance of 12-15 on-line students per semester. Part of the “Seminars on Science” series, most students are science educators at the high-school level. Update on current discoveries in astronomy, tips on science education methods, use of internet tools, etc...

Supervision of graduate students :

- **Josh Schlieder (State University of New York, Stonybrook):** Ph.D. candidate, Thesis title: “A Search for Young Low-Mass Stars as Members of Nearby Moving Groups”, (Co-supervision with Prof. Michal Simon).
- **Marie-Michele Limoges (Universite de Montreal):** Ph.D. candidate, Thesis title: “Physical Parameters of White Dwarfs in the Solar Neighborhood”, (Co-supervision with Prof. Pierre Bergeron).

Supervision of college undergraduates :

Supervision of college undergraduates in semester-long research programs, several as part of the NSF Research Experience for Undergraduates (REU) program:

- 2003: **Drew McCourt, Maria Halmo.**
- 2004: **Bethany Bongiorno.**
- 2005: **Amanda Moffett.**
- 2007: **Elisa Corin, Marina Zaiats, Kelly Patton.**
- 2008: **Jacob Hummel, Monica Huang.**
- 2009: **Jacqueline Stone, Bryndis Cruz.**
- 2010: **Faith Pilacik, Naomi Alpert, Helga Nellie Wong, Hannah Bish**

Mentoring of high-school students :

Mentoring of high-school juniors and seniors in small, focused research programs, for participation in local/national science fairs and the “Intel Talent Search” competition:

- 2007: **Christopher Jordan, Katherine Bedkowski** (Intel national semi-finalist)
- 2008: **Amy Secundi**
- 2009: **Grace Guo, Philip Schmiede, Michal Yardeni**
- 2010: **Kevin Chon**

Education / public outreach :

- **Credits:** *“Journey to the Stars” - A planetarium space show produced by the American Museum of Natural History (2009), simulations and 3-D representation of stars in the Galaxy (positions and motions), realistic rendition of the Solar neighborhood.*
- **Science presentations to local elementary school and high school students, various groups, through the AMNH summer school program.**
- **Presentations and hands-on activities to local 3rd, and 4th grade classes in local schools with under-represented minorities.** *Hands-on activities to stimulate interest in the space sciences, and teach about Earth, the Sun, and the Solar System. Over 400 children reached so far. Volunteer work. (Schools with 60% latino, 30% black population - Hackensack N.J. School district).*

List of Scientific Publications:

A) Publications in refereed journals:

45. Schlieder, J. E., **Lépine, S.**, and Simon, M. 2010, “ β Pictoris and AB Doradus Moving Groups: Likely New Low-mass Members,” *The Astronomical Journal*, 140, 119
44. Apps, K., Clubb, K. I., Fischer, D. A.; Gaidos, E., Howard, A., Johnson, J. A., Marcy, G. W., Isaacson, H., Giguere, M. J., Valenti, J. A., Rodriguez, V., Chubak, C., and **Lépine, S.** 2010, “M2K: I. A Jupiter-Mass Planet Orbiting the M3V Star HIP 79431,” *Publications of the Astronomical Society of the Pacific*, 122, 156
43. **Lépine, S.**, Thorstensen, J. R., Shara, M. M., & Rich, R. M. 2009, “New Neighbors: Parallaxes of 18 nearby stars selected from the LSPM-north catalog,” *The Astronomical Journal*, 137, 4109
42. Dong, S., Gould, A., Udalski, A., Anderson, J., Christie, G. W.; Gaudi, B. S., The OGLE Collaboration, Jaroszyński, M., Kubiak, M., Szymański, M. K., Pietrzyński, G., Soszyński, I., Szewczyk, O., Ulaczyk, K., Wyrzykowski, Ł., The μ FUN Collaboration, DePoy, D. L., Fox, D. B., Gal-Yam, A., Han, C., **Lépine, S.**, McCormick, J., Ofek, E., Park, B.-G., Pogge, R. W., The MOA Collaboration, Abe, F., Bennett, D. P., Bond, I. A., Britton, T. R., Gilmore, A. C., Hearnshaw, J. B., Itow, Y., Kamiya, K., Kilmartin, P. M., Korpela, A., Masuda, K., Matsubara, Y., Motomura, M., Muraki, Y., Nakamura, S., Ohnishi, K., Okada, C., Rattenbury, N., Saito, T., Sako, T.; Sasaki, M.; Sullivan, D., Sumi, T., Tristram, P. J., Yanagisawa, T., Yock, P. C. M., Yoshioika, T., The PLANET/Robo Net Collaborations, Albrow, M. D., Beaulieu, J. P., Brilliant, S., Calitz, H., Cassan, A., Cook, K. H., Coutures, Ch., Dieters, S., Prester, D. Dominis, Donatowicz, J., Fouqué, P., Greenhill, J., Hill, K., Hoffman, M., Horne, K., Jørgensen, U. G., Kane, S., Kubas, D., Marquette, J. B., Martin, R., Meintjes, P., Menzies, J., Pollard, K. R., Sahu, K. C., Vinter, C., Wambsganss, J., Williams, A., Bode, M., Bramich, D. M., Burgdorf, M., Snodgrass, C., Steele, I., Doublie, V., Foellmi, C., 2009, “OGLE-2005-BLG-071Lb, the Most Massive M Dwarf Planetary Companion?”, *The Astrophysical Journal*, 695, 970
41. Sivarani, T., **Lépine, S.**, Kembhavi, A. K., & Gupchup, J. 2009, “SDSS J125637-022452: a high proper motion L subdwarf,” *The Astrophysical Journal Letters*, 694, L140
40. **Lépine, S.**, & Simon, M. 2009, “Nearby young stars selected by proper motion. I. Four new members of the Beta Pictoris moving group from the TYCHO-2 catalog,” *The Astronomical Journal*, 137, 3632
39. Woolf, V. M., **Lépine, S.**, & Wallerstein, G. 2009, “Calibrating M Dwarf Metallicities Using Molecular Indices: Extension to Low Metallicity Stars”, *Publications of the Astronomical Society of the Pacific*, 121, 117
38. Thorstensen, J. R.; **Lépine, S.**, & Shara, M. 2008, “Parallax and Distance Estimates for Twelve Cataclysmic Variable Stars,” *The Astronomical Journal*, 136, 2107
37. **Lépine, S.**, & Moffat, Anthony F. J. 2008, “Direct Spectroscopic Observations of Clumping in O-Star Winds,” *The Astronomical Journal*, 136, 548
36. **Lépine, S.**, & Scholz, R.-D. 2008, “Twenty-Three New Ultracool Subdwarfs from the Sloan Digital Sky Survey,” *The Astrophysical Journal Letters*, 681, L33
35. **Lépine, S.** 2008, “New High Proper Motion Stars from the Digitized Sky Survey. Iv. Completion of the Southern Survey and 170 Additional Stars with $\mu > 0.45'' \text{ yr}^{-1}$,” *The Astronomical Journal*, 135, 2177
34. Adelman-McCarthy, J. K., and 153 coauthors including **Lépine, S.** 2008, “The Sixth Data Release of the Sloan Digital Sky Survey,” *The Astrophysical Journal Supplement*, 175, 297

33. Burgasser, A. J., Vrba, F. J.; **Lépine, S.**, Munn, J. A., Luginbuhl, C. B.; Henden, A. A., Guetter, H. H., & Canzian, B. C. 2008, "Parallax and Luminosity Measurements of an L Subdwarf, *The Astrophysical Journal*," 672, 1159
32. **Lépine, S.**, Rich, R. M.; Shara, M. M., Cruz, K. L., Skemer, A. 2007, "An astrometric companion to the nearby metal-poor, low-mass star LHS 1589," *The Astrophysical Journal*, 668, 507
31. Shara, M. M., Martin, C. D., Seibert, M., Rich, R. M., Salim, S., Reitzel, D., Schiminovich, D., Deliyannis, C. P., Sarrazine, A. R., Kulkarni, S. R., Ofek, E. O., Brosch, N., **Lépine, S.**, Zurek, D., de Marco, O., Jacoby, G. 2007, "An ancient nova shell around the dwarf nova Z Camelopardalis," *Nature* 466, #7132, pp.159-162
30. Kalirai, J. S., Anderson, J., Richer, H. B., King, I. R., Brewer, J. P., Carraro, G., Davis, S. D., Fahlman, G. G., Hansen, B. M. S., Hurley, J. R., **Lépine, S.**, Reitzel, D. B., Rich, R. M., Shara, M. M., & Stetson, P. B. 2007, "The Space Motion of the Globular Cluster NGC 6397," *The Astrophysical Journal Letters*, 657, L93.
29. Yost, S. A., Swan, H. F., Rykoff, E. S., Aharonian, F., Akerlof, C. W., Alday, A., Ashley, M. C. B., Barthelmy, S., Burrows, D., Depoy, D. L., Dufour, R. J., Eastman, J. D., Forgey, R. D., Gehrels, N., Gogus, E., Guver, T., Halpern, J. P., Hardin, L. C., Horns, D., Kizilovglu, U., Krimm, H. A., **Lépine, S.**, Liang, E. P., Marshall, J. L., McKay, T. A., Mineo, T., Mirabal, N., Ozel, M., Phillips, A., Prieto, J. L., Quimby, R. M., Romano, P., Rowell, G., Rujopakarn, W., Schaefer, B. E., Silverman, J. M., Siverd, R., Skinner, M., Smith, D. A., Smith, I. A., Tonnesen, S., Troja, E., Vestrand, W. T., Wheeler, J. C., Wren, J., Yuan, & F., Zhang, B. 2007, "Exploring Broadband GRB Behavior During gamma-ray Emission," *The Astrophysical Journal*, 657, 925.
28. **Lépine, S.**, & Bongiorno, B. 2007, "New Distant Companions to Known Nearby Stars. II. Faint Companions of HIPPARCOS Stars and the Frequency of Wide Binary Systems," *The Astronomical Journal*, 133, 889
27. Lanning, H. H., & **Lépine, S.** 2006, "Proper Motions of Faint UV-Bright Sources in the Sandage Two-color Survey of the Galactic Plane," *PASP*, 118, 1639
26. Thorstensen, J. R., **Lépine, S.**, & Shara, M. 2006, "The Unusual Cataclysmic Binary Star RBS 0490 and the Space Density of Cataclysmic Variables," *PASP*, 118, 1238
25. **Lépine, S.**, Rich, R. M., & Shara, M. M. 2005, "Discovery of a nearby halo white dwarf with proper motion $\mu = 2.55$ arcsec/yr," *The Astrophysical Journal Letters*, 633, L121
24. **Lépine, S.** 2005, "Nearby Stars from the LSPM-North Proper-Motion Catalog. I. Main-Sequence Dwarfs and Giants within 33 Parsecs of the Sun," *The Astronomical Journal*, 130, 1680
23. **Lépine, S.** 2005, "New High Proper Motion Stars from the Digitized Sky Survey. III. Stars with proper motions $0.45 < \mu < 2.0'' \text{ yr}^{-1}$ south of Decl. = -30," *The Astronomical Journal*, 130, 1247
22. Udalski, A., Jaroszynski, M., Paczynski, B., Kubiak, M., Szymanski, M. K., Soszynski, I., Pietrzynski, G., Ulaczyk, K., Szewczyk, O., Wyrzykowski, L., Christie, G. W., DePoy, D. L., Dong, S., Gal-Yam, A., Gaudi, B. S., Gould, A., Han, C., **Lépine, S.**, McCormick, J., Park, B.-G., Pogge, R. W., Bennett, D. P., Bond, I. A., Muraki, Y., Tristram, P. J., Yock, P. C. M., Beaulieu, J.-P., Bramich, D. M., Dieters, S. W., Greenhill, J., Hill, K., Horne, K., & Kubas, D. 2005, "A Jovian-Mass Planet in Microlensing Event OGLE-2005-BLG-071," *The Astrophysical Journal*, 628, L109
21. Lefèvre, L., Marchenko, S. V., **Lépine, S.**, Moffat, A. F. J., Acker, A., Harries, T. J., Anuk, K., Bohlender, D. A., Demers, H., Grosdidier, Y., Hill, G. M., Morrison, N. D., Knauth, D. C., Skalkowski, G., & Viti, S. 2005, "Spectroscopic study of the long-period dust-producing WC7pd+O9 binary HD192641," *Monthly Notices of the Royal Astronomical Society*, 360, 141

20. **Lépine, S.**, Shara, M. M., & Rich, R. M. 2005, "A Catalog of Northern Stars With Annual Proper Motions Larger Than 0.15 Seconds of Arc (LSPM-north Catalog)," *The Astronomical Journal*, 129, 1483
19. **Lépine, S.**, Rich, R. M., & Shara, M. M. 2004, "The esdM6.5 star LSRJ0822+1700: a new ultracool extreme subdwarf," *The Astrophysical Journal Letters*, 602, L125
18. **Lépine, S.**, Shara, M. M., & Rich, R. M. 2003, "New High Proper Motion Stars from the Digitized Sky Survey. II. Northern Stars with $0.5 < \mu < 2.0'' \text{ yr}^{-1}$ at High Galactic Latitudes," *The Astronomical Journal*, 126, 921.
17. **Lépine, S.**, Rich, R. M., & Shara, M. M. 2003, "LSR1610-0040: the first early-type L subdwarf," *The Astrophysical Journal Letters*, 591, L49.
16. Salim, S., **Lépine, S.**, Rich, R. M., & Shara, M. M. 2003, "LSR 0602+3910: Discovery of a Bright Nearby L-Type Brown Dwarf," *The Astrophysical Journal Letters*, 586, L149.
15. **Lépine, S.**, Rich, R. M., & Shara, M. M. 2003, "Spectroscopy of New High Proper Motion Stars in the Northern Sky. I. New Nearby Stars, New High Velocity Stars, and an Enhanced Classification Scheme for M Dwarfs," *The Astronomical Journal*, 125, 1598.
14. **Lépine, S.**, Shara, M. M., & Rich, R. M. 2003, "Discovery of an Ultracool Subdwarf: LSR 1425+7102, the First Star with Spectral Type sdM8.0," *The Astrophysical Journal Letters*, 585, L69.
13. **Lépine, S.**, Rich, R. M., Neill, J. D., Caulet, A., & Shara, M. M. 2002, "Discovery of an M8.5 Dwarf With Proper Motion $\mu = 2.38'' \text{ yr}^{-1}$," *The Astrophysical Journal Letters*, 581, L47.
12. **Lépine, S.**, Shara, M. M., Rich, R. M. 2002, "New High Proper Motion Stars from the Digitized Sky Survey. I. Northern Stars with $0.5'' \text{ yr}^{-1} < \mu < 2.0'' \text{ yr}^{-1}$ at Low Galactic Latitudes," *The Astronomical Journal*, 124, 1190.
11. **Lépine, S.**, Shara, M. M., & Rich, R. M. 2002, "New Distant Companions to Known Nearby Stars. I. GJ 4047B, GJ 718B, GJ 747.2C, GJ 4100B and GJ 4153B," *The Astronomical Journal*, 123, 3434.
10. **Lépine, S.**, Wallace, D., Shara, M. M., Moffat, A. F. J., & Niemela, V. S. 2001, "Spatially Resolved STIS Spectra of WR+OB Binaries with Colliding Winds," *The Astronomical Journal*, 122, 3407.
9. **Lépine, S.**, Moffat, A. F. J., St-Louis, N., Marchenko, S. V., Dalton, M. J., Crowther, P. A., Smith, L. J., Willis, A. J., Antokhin, I. I., & Tovmassian, G. H. 2000, "Wind Inhomogeneities in Wolf-Rayet Stars. IV. Using Clumps to Probe the Wind Structure in the WC8 Star HD 192103," *The Astronomical Journal*, 120, 3201.
8. **Lépine, S.**, Shara, M.M., Livio, M., & Zurek, D. 1999, "First Direct Measurement of Acceleration in the Outflow of a Nova: U Scorpii (1999)," *The Astrophysical Journal Letters*, 522, L121.
7. **Lépine, S.**, Eversberg, T., & Moffat, A.F.J. 1999, "Wind Inhomogeneities in Wolf-Rayet Stars. III. Unusual Emission-Line Profile Variations in $\gamma 2$ Velorum," *The Astronomical Journal*, 117, 1441.
6. **Lépine, S.**, & Moffat, A.F.J. 1999, "Wind Inhomogeneities in Wolf-Rayet Stars. II. Investigation of Emission-Line Profile Variations," *The Astrophysical Journal*, 514, 909.
5. **Lépine, S.** 1998, "Observations of Stellar Wind Instabilities and Variability on Small and Large Scales," *Astrophysics and Space Sciences*, 260, 101-112.
4. Eversberg, T.E., **Lépine, S.** & Moffat, A.F.J. 1998, "Outmoving Micro-Structures in the Wind of ζ Puppis," *The Astrophysical Journal*, 494, 799-805.

3. **Lépine, S.**, Moffat, A.F.J. & Henriksen, R.N. 1996, "Wind Inhomogeneities in Wolf-Rayet Stars. I. Search for Scaling Laws Using Wavelet Transforms," *The Astrophysical Journal*, 466, 392-403.
2. **Lépine, S.** 1994, "Wavelet Analysis of Wolf-Rayet Emission Lines: Evidence for Clumping," *Astrophysics and Space Sciences*, 221, 371-382.
1. Moffat, A.F.J., **Lépine, S.**, Henriksen, R.N. & Robert, C. 1994, "First Wavelet Analysis of Emission Line Variations in Wolf-Rayet Stars: Turbulence in Hot Star Outflows," *Astrophysics and Space Sciences*, 216, 55-60.

B) Publications in conference proceedings, and other publications:

32. Schlieder, J., Simon, M., and **Lépine, S.** 2009, "New Low-Mass Members of the AB Doradus Nearby Young Moving Group", American Astronomical Society Meeting #215, #455.09, *Bulletin of the American Astronomical Society*, Vol. 42, p.474
31. Stone, J., **Lépine, S.**, Cruz, B., and Jordan, C. 2009, "New Stars Within 33 parsecs of the Sun from the SUPERBLINK Survey", American Astronomical Society Meeting #215, #424.09, *Bulletin of the American Astronomical Society*, Vol. 42, p.332
30. Cruz, B., **Lépine, S.**, Stone, J., and Jordan, C. 2009, "New Binary Systems in the Northern Sky from the SUPERBLINK Survey", American Astronomical Society Meeting #215, #419.25, *Bulletin of the American Astronomical Society*, Vol. 42, p.280
29. **Lépine, S.** 2009, "Proper Motions Of Ultra-violet Sources In The GALEX Database: White Dwarfs, Subdwarfs, And Other Nearby Hot Stars", American Astronomical Society Meeting #215, #300.09, *Bulletin of the American Astronomical Society*, Vol. 42, p.296
28. Malz, A., Rich, R., and **Lépine, S.** 2009, "Low-mass Binaries in the Galactic Halo Resolved by Adaptive Optics", American Astronomical Society Meeting #213, #602.04
27. Mille, F. Di, Ciroti, S., Navasardyan, H., **Lépine, S.**, Zee, L, V., Barnes, K, L., Hartmann, D. H., Brittain, S. D., Updike, A. C., Kaur, A., Williams, G. G., Pietsch, W., Siviero, A., Saguner, T., Orio, M., Rafanelli, P., Bianchini, A. 2009, "Optical Spectroscopy of the M31 nova M31N-2009-10b", *The Astronomer's Telegram*, #2248
26. Schlieder, Joshua E., Simon, M., and **Lépine, S.** 2009, "New Low-Mass Members of Nearby Young Moving Groups", American Astronomical Society Meeting #214, #421.02
25. Hummel, J., **Lépine, S.**, and Huang, M. 2009, "Local Stellar Kinematics from the SUPERBLINK Database", American Astronomical Society, American Astronomical Society Meeting #213, #407.11
24. **Lépine, S.**, Lee, Y. S., Yanni, B. and the SEGUE collaboration 2009, "Cool Subdwarfs As Tracers Of The Galactic Halo: A Massive Spectroscopic Survey Of Low-mass, Metal-poor Stars In SDSS", American Astronomical Society, American Astronomical Society Meeting #213, #303.04
23. **Lépine, S.** 2008, "Metal-poor stars don't blush: Broadband colors of confirmed cool subdwarfs in the SDSS", *Cool Stars Meeting #15, in press*
22. Burgasser, A. J.; **Lépine, S.**; Lodieu, N.; Scholz, R.-D.; Delorme, P.; Jao, W.-C.; Swift, B. J.; Cushing, M. C. 2008, "Ultracool Subdwarfs: The Halo Population Down to the Substellar Limit", *Cool Stars Meeting #15, in press*

21. **Lépine, S.**; Shara, M. M.; Rich, R.-M.; Wittenberg, A.; Halmo, M.; Bongiorno, B. 2008, "A new all-sky catalog of stars with large proper motions", A Giant Step: from Milli- to Micro-arcsecond Astrometry, Proceedings of the International Astronomical Union, IAU Symposium, Volume 248, p. 74-77
20. Corin, E.; **Lépine, S.**; Jordan, C.; Patton, K.; Zaiats, M. 2007, "Kinematics Of Low-mass Stars In The Vicinity Of The Sun From The SUPERBLINK Survey", American Astronomical Society meeting 211, #104.09, Bulletin of the American Astronomical Society.
19. Zaiats, M.; **Lépine, S.**; Corin, E.; Patton, K.; Jordan, C. 2007, "New Low-mass Stars With Small Proper Motions In The Solar Neighborhood From The Superblink Database." American Astronomical Society meeting 211, #103.20, Bulletin of the American Astronomical Society.
18. **Lépine, S.**; Bongiorno, B.; Corin, E.; Halmo, M.; Jordan, C.; Moffett, A. J.; Patton, K.; Shara, M. M.; Wittenberg, A.; Zaiats, M. 2007, "Slow Neighbors: A Search for Nearby Stars With Small Proper Motions", American Astronomical Society meeting 211, #73.06, Bulletin of the American Astronomical Society.
17. Thorstensen, John R.; **Lépine, S.**; Shara, M.; Peters, C. S. 2007, "Parallaxes and Distance Estimates for Eleven Cataclysmic Binary Stars", American Astronomical Society meeting 211, #51.17, Bulletin of the American Astronomical Society.
16. Lanning, Howard H.; **Lépine, S.** 2007, "Spectroscopic Confirmation and Classification of New White Dwarfs from the Sandage Two-color Survey of the Galactic Plane", American Astronomical Society meeting 211, #15.05, Bulletin of the American Astronomical Society.
15. Lanning, H., & **Lépine, S.** "The Search for White Dwarfs in the Sandage Two-color Survey of the Galactic Plane", American Astronomical Society Meeting 209, # 103.02; Bulletin of the American Astronomical Society.
14. **Lépine, S.**, & Shara, M. M. 2006, "The LSPM-south: new catalog of southern stars with proper motions $\mu > 0.15''/\text{yr}$ ", American Astronomical Society Meeting 207, # 150.01; Bulletin of the American Astronomical Society.
13. **Lépine, S.** 2006, "High Proper Motion Stars in SEGUE and the Local Kinematics of the Galactic Halo", American Astronomical Society Meeting 207, # 147.05.
12. Lefèvre, L., **Lépine, S.**, Acker, A., Marchenko, S. V., & Moffat, A. F. J. 2005, "Variability of the dust forming binary Wolf-Rayet Star HD192641 (WR137)", SF2A-2004: Semaine de l'Astrophysique Française, EdP-Sciences, Conference Series, p. 297.
11. Burgasser, A. J., Kirkpatrick, J. D., **Lépine, S.**, Gizis, J. E., Reid, I. N., Cushing, M. 2005, "Metallicity Diagnostics in the Spectra of Ultracool M and L Subdwarfs", American Astronomical Society Meeting 205, # 11.06.
10. **Lépine, S.** 2002, "Emission-Line Profile-Variability Induced by the Rotation of a Structured Wind", Interacting Winds from Massive Stars. ASP Conference Proceedings, Vol. 260. Edited by Anthony F. J. Moffat and Nicole St-Louis, p.185.
9. Moffat, A.F.J., & **Lépine, S.** 1999, "The Structure of Wolf-Rayet Stars from an Observational Viewpoint", in proceedings: "Thermal and Ionization Aspects of Flows from Hot Stars, ASP Conference Series, Vol. 204. Edited by Henny Lamers and Arved Sapar, p.15.
8. **Lépine, S.**, & Moffat, A.F.J. 1999, "Inhomogeneous Winds: The Nature of Emission-Line Profile Variations in Wolf-Rayet Spectra.", in: Proceedings of the IAU symposium # 193, "Wolf-Rayet Stars Phenomena in Massive Stars and Starburst Galaxies", K.A. van der Hucht, Gloria Koenigsberger, & P.R.J. Eenens eds. pp.250-251.

7. Eversberg, T.E., **Lépine, S.** & Moffat, A.F.J. 1997, "First Detection of Structures in O Star Winds (The last run with the Reticon).", in: Bulletin of the Canada-France-Hawaii Telescope, No.36, p.3.
6. **Lépine, S.** 1997, "Wolf-Rayet emission lines varying all together : the case of the WC9 star HD164270", in: Proceedings "Wolf-Rayet Stars in the Framework of Stellar Evolution"; 33rd Liège Int. Astroph. Coll., J.M. Vreux et al. eds., pp.253-256.
5. **Lépine, S.**, Eversberg, T.E. & Moffat, A.F.J., 1996, "The Wolf-Rayet Star gamma-2 Velorum Under Close Scrutiny: Very Fine Detail of the Variations in the Broad CIII 5696 Emission Line.", Journal of the Royal Astronomical Society of Canada, Vol.90/5-6.
4. Eversberg, T.E., **Lépine, S.** & Moffat, A.F.J. 1997, "Blobs Also in O Star Winds.", in: Proceedings of the International Astrophysical Liège Meeting "Wolf-Rayet Stars in the Framework of Stellar Evolution"; 33rd Liège Int. Astroph. Coll., J.M. Vreux et al. eds., pp.225-228.
3. **Lépine, S.** 1995, "Effects of Wind Clumping on Colliding Winds.", in: Proceedings of the IAU symposium # 163, "Wolf-Rayet Stars: Binaries, Colliding Winds, Evolution", K.A. van der Hucht & P.M. Williams eds., pp.411-415.
2. **Lépine, S.** 1995, "Wavelet Analysis of variable Wolf-Rayet Emission Lines.", in: Proceedings of the IAU symposium # 163, "Wolf-Rayet Stars: Binaries, Colliding Winds, Evolution", K.A. van der Hucht & P.M. Williams eds., pp.60-61.
1. Moffat, A.F.J., Robert, C., **Lépine, S.** & Henriksen, R.N., 1994, "Turbulence in Outflows from Hot Stars.", in: Bulletin of the Canada-France-Hawaii Telescope, No.31, p.14.