

FOR STUDENTS: DURING YOUR VISIT

Compare Skeletons:

At the start of the exhibition, compare the skeleton of the chimpanzee to either the human or the Neanderthal. Describe one difference in the two:

Skulls: _____

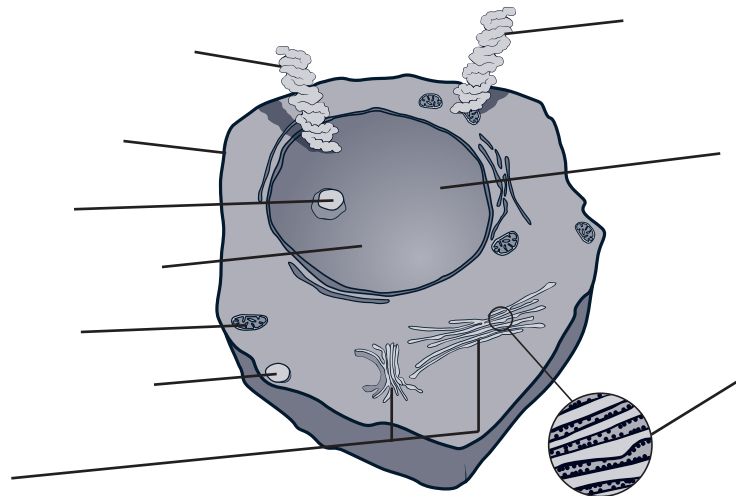
Pelvises: _____

Feet: _____

Use the interactives behind the skeletons to explore how scientists interpret these differences.

Cell Model:

Examine the cell model in the exhibition. Label the parts of the cell below. Circle the structures that contain DNA.



Diorama Scenes: Interpreting Evidence

1. Walk across the hall from the cell model to watch the video “Reconstructions: Faces from Fossils.”

2. Now pick the diorama scene in the center section that you like most. Observe its details. How do you think the scientists and artists that made this scene knew...

...how tall to make the figures? _____

...what tools to give them? _____

...what their environment looked like? _____

Would they know what their clothes looked like? Why or why not? _____

Would they know what their skin color and body hair looked like? Why or why not? _____