



AMERICAN MUSEUM
OF NATURAL HISTORY



ANNUAL REPORT 2016

JULY 1, 2015 - JUNE 30, 2016



FROM THE PRESIDENT AND CHAIRMAN

We live in a time when science underpins many of our greatest challenges, from the environment to human health. An informed understanding of the world around us is essential to full participation in our society and democracy, yet our children continue to fall behind their peers worldwide in science achievement, and science is increasingly questioned in public discourse. In this context, the American Museum of Natural History's work of advancing scientific research, preparing the next generation of scientists and science teachers, and improving the public understanding of science is more important than ever.

This year, Museum scientists continued to travel the globe to study species and habitats, including extensive, cross-disciplinary expeditions in biodiversity-rich Cuba in collaboration with colleagues at Havana's National Natural History Museum, while also pursuing ground-breaking molecular, genomic, and phenomic research at home in our laboratories and world-renowned collections. The Museum's collection of specimens and artifacts, one of the most scientifically significant in the world, passed the 34 million mark, including growing collections of frozen tissue, DNA, and astrophysics and genomic data.

The Museum welcomed approximately five million visitors this year, many marveling at the new Titanosaur exhibit. At 122 feet long, this spectacular new icon highlights the thrilling and significant discoveries in paleontology today. Special exhibitions presented the frontiers of science such as the human microbiome and the links between dinosaurs and modern birds. Public programs ensured that the Museum remained a popular destination for the curious of all ages—from the youngest scientists discovering nature to families learning together, from young adults gathering at SciCafe to discuss science and society, to film buffs enjoying the Margaret Mead Film Festival. Of course, the Museum reaches many millions more online through its website, videos, apps, digital learning opportunities, and social media, and countless others through our touring exhibitions and Space Shows.

The annual commencement ceremony of our Richard Gilder Graduate School conferred Ph.D. and Master of Arts in Teaching degrees, in the only such museum-based degree-granting programs in the Western hemisphere. It was a deeply proud moment as we sent our new scientists and science teachers into a world

that so needs them, and also paid tribute to pioneering Chinese paleontologist Mee-mann Chang with an honorary doctorate.

Some 4,000 K-12 teachers participated in professional development programs, and the pioneering Urban Advantage consortium of New York's science-based cultural institutions, which the Museum leads, continued to expand its work to improve the teaching and learning of science in New York City's middle schools. This year, Urban Advantage reached more than 77,000 students and 790 teachers in 281 schools across the five boroughs.

Finally, to more fully leverage the confluence of the Museum's strengths and society's need for pioneering science and effective science education, this year the Museum announced plans to create a major new facility, the Gilder Center for Science, Education, and Innovation, and named Jeanne Gang as its architect and Ralph Appelbaum as exhibit designer. The new Richard Gilder Center will showcase the Museum as an active, integrated place of science and education, rooted in the collections, imbued with the power of technology, and informed by the ways people learn, discover, and interact today.

Founded in 1869 as an institution of scientific research and education, the Museum's work has never been more timely or important than it is now. We thank you for your interest and participation.

Lewis W. Bernard
Chairman

Ellen V. Futter
President

SCIENCE

4

EDUCATION

10

EXHIBITION

12

REPORT OF THE CHIEF FINANCIAL OFFICER

14

FINANCIAL STATEMENTS

16

BOARD OF TRUSTEES

18

COMMITTEES OF THE BOARD OF TRUSTEES

20

COMMITTEES OF THE MUSEUM, PROJECT COMMITTEES, AND ADVISORY COUNCILS

21

GIFTS AND GRANTS

22

PLANNED GIVING

34

CREDITS

35

EXPEDITIONS:

Adding to Scientific Knowledge and Collections

93

EXPEDITIONS

7

CONTINENTS

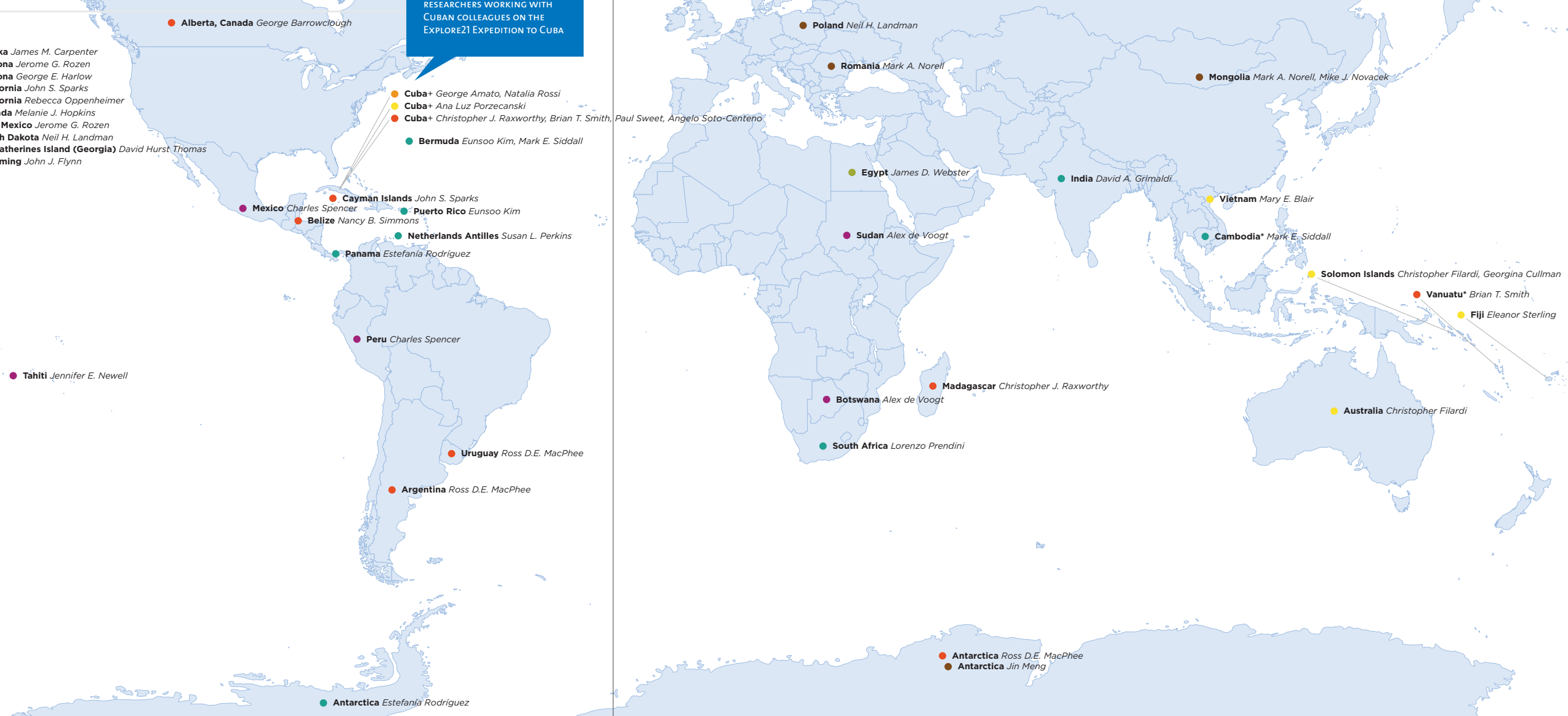
SELECT EXPEDITIONS FROM FY2016

- ANTHROPOLOGY
- EARTH AND PLANETARY SCIENCES
- INVERTEBRATE ZOOLOGY
- PALEONTOLOGY
- VERTEBRATE ZOOLOGY
- SACKLER INSTITUTE FOR COMPARATIVE GENOMICS
- CENTER FOR BIODIVERSITY AND CONSERVATION

+ Explore21 Expedition to Cuba
* Constantine S. Niarchos Expeditions

- Alaska James M. Carpenter
- Arizona Jerome G. Rozen
- Arizona George E. Harlow
- California John S. Sparks
- California Rebecca Oppenheimer
- Nevada Melanie J. Hopkins
- New Mexico Jerome G. Rozen
- South Dakota Neil H. Landman
- St. Catherines Island (Georgia) David Hurst Thomas
- Wyoming John J. Flynn

7
RESEARCHERS WORKING WITH CUBAN COLLEAGUES ON THE EXPLORE21 EXPEDITION TO CUBA



COLLECTIONS

34,036,183

SPECIMENS AND ARTIFACTS

55,718

COLLECTION ITEMS ADDED

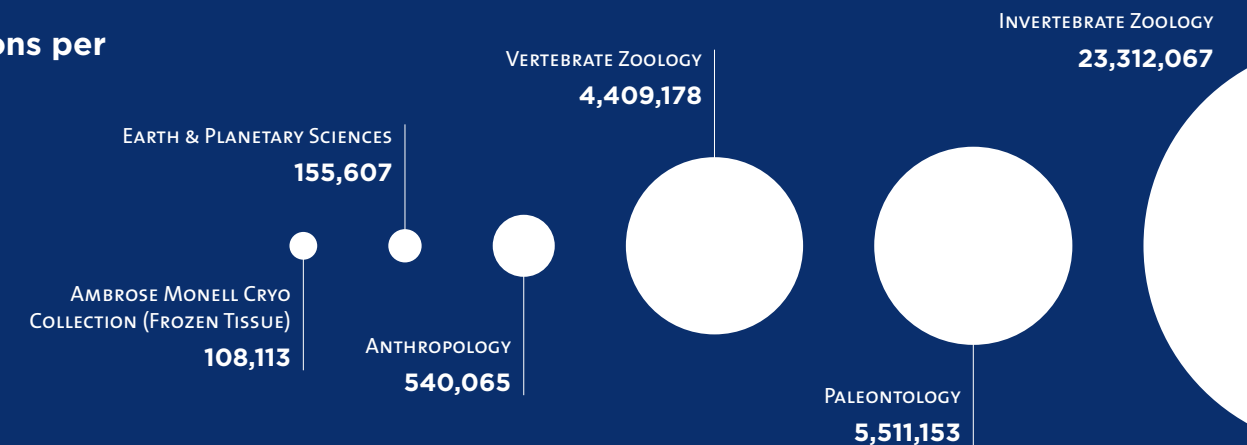
22,728

COLLECTION ITEMS LOANED

1,476

VISITING SCHOLARS HOSTED

Collections per Division



RESEARCH HIGHLIGHTS:

Select Publications Across Five Divisions

MORE THAN
430
SCIENTIFIC PUBLICATIONS

4

DOCTORAL DISSERTATION GRANTS FROM THE NATIONAL SCIENCE FOUNDATION

1

"YOUNG JUPITER" EXOPLANET DISCOVERED



JULY 2015



How the Smilodon Got Its Teeth

TSENG

Vision for Future Space Telescopes

OPPENHEIMER, SHARA, MAC LOW

Flies in Amber Were Ancient Pollinators

GRIMALDI

AUGUST 2015

Dogs Evolved with Climate Change

TSENG

NOVEMBER 2015

Analysis of Oldest-known Plant-visiting Bat Suggests It Was Omnivorous

SIMMONS

Wasp Fossils Suggest Ice Age California Similar to Modern Environment

HOLDEN

OCTOBER 2015

Ancient "Supershark" Fossils Discovered in Texas

MAISEY

Human Relative's Foot a Step Towards Modern Walking

HARCOURT-SMITH

New Species of Human Relative Discovered

HARCOURT-SMITH

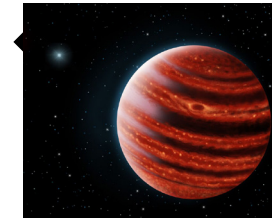
SEPTEMBER 2015

Polar Bears May Survive the Ice Melt

ROCKWELL, GORMEZANO

Astronomers Discover "Young Jupiter" Exoplanet

OPPENHEIMER, RICE



Deceptive Woodpecker Uses Mimicry to Avoid Competition

BENZ



AUGUST 2015

NOVEMBER 2015

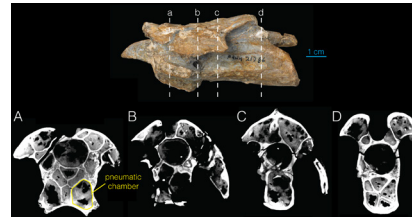
Reptile Fossil Solves Mystery of How Snakes Lost Their Legs

YI, NORELL

DECEMBER 2015

Surprising Path of Bird Evolution

CRACRAFT, CLARAMUNT



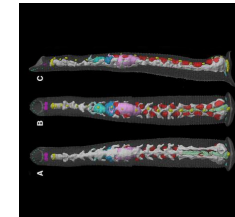
Dinosaurs May Have Breathed Like Birds

WATANABE, GOLD, DAVIDSON, NORELL

JANUARY 2016

Museum Researchers Discover Glowing Sea Turtles

SPARKS



New Leech Species Named for Author Amy Tan

TESSLER, SIDDALL

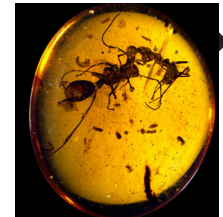
FEBRUARY 2016

Researchers Sequence First Bedbug Genome

TESSLER, DeSALLE, SORKIN, SIDDALL, AMATO

Researchers Find Malaria Parasite in East Coast's White-tailed Deer

PERKINS



Fossils in Amber Show Social Behavior in Ancient Insects

GRIMALDI, BARDEN

APRIL 2016

Research Shows Vital Links Between Lemurs and Fruit Trees

HERRERA



Bigger Brains Drove Evolution to Bigger Human Bodies

GRABOWSKI

Four New Lizard Species from Eastern Paraguay

CARVALHO



Researchers Discover Second Native Hawaiian Bat

SIMMONS

MARCH 2016

Extinct Marine Mammal Hunted Clams with a Big Bite

TSENG, GROHÉ, FLYNN

Why Some Supernovae Continue to Burn Bright

GRAUR

Dodos Might Have Been Quite Intelligent

GOLD, NORELL

Ancient Glyptodonts Related to Modern Armadillos

MACPHEE



APRIL 2016



Paleontologists Gain New Insight to "Telescoping" Crocodile Eyes

FLYNN

Flapping Before Flight

HEERS



Glowing Shark Patterns Get Brighter in Deep Water

SPARKS

MAY 2016



DNA Study Suggests Scorpions Diversified as Andes Formed

PRENDINI

JUNE 2016



Bioluminescence Evolved Frequently in Fishes

SPARKS

Scorpions Share Similar Tastes in Burrow Architecture

PRENDINI

CURATORS AND DIRECTORS

MICHAEL J. NOVACEK, Senior Vice President and Provost of Science

SCOTT A. SCHAEFER, Dean of Science for Collections, Exhibition, and Public Understanding of Science

JOHN J. FLYNN, Dean of Richard Gilder Graduate School

DIVISION OF ANTHROPOLOGY

Laurel Kendall, Division Chair

Alex de Voogt

Jennifer E. Newell

Brian G. Richmond

Charles S. Spencer

David Hurst Thomas

Peter M. Whiteley

DIVISION OF INVERTEBRATE ZOOLOGY

James M. Carpenter,

Peter J. Solomon Family Curator, Division Chair

Robert DeSalle

David A. Grimaldi

Eunsoo Kim

Susan L. Perkins

Lorenzo Prendini

Estefanía Rodríguez

Jerome G. Rozen, Jr.

Mark E. Siddall

Ward C. Wheeler

DIVISION OF PALEONTOLOGY

Mark A. Norell,
Macaulay Curator, Division Chair

John J. Flynn,
Frick Curator of Fossil Mammals

Melanie Hopkins

Neil H. Landman

John G. Maisey,
Herbert R. and Evelyn Axelrod Research Curator

Jin Meng

Michael Novacek

DIVISION OF PHYSICAL SCIENCES

DEPARTMENT OF ASTROPHYSICS

Mordecai-Mark Mac Low

Rebecca Oppenheimer

Michael M. Shara

DEPARTMENT OF EARTH AND PLANETARY SCIENCES

Denton S. Ebel, Division Chair

George E. Harlow

Edmond A. Mathez

James D. Webster

DIVISION OF VERTEBRATE ZOOLOGY

DEPARTMENT OF HERPETOLOGY

Christopher J. Raxworthy

Frank T. Burbrink

DEPARTMENT OF ICHTHYOLOGY

Scott A. Schaefer

John S. Sparks

Melanie L. J. Stiassny,
Herbert R. and Evelyn Axelrod Research Curator

DEPARTMENT OF MAMMALOGY

Ross D.E. MacPhee

Nancy B. Simmons

Robert S. Voss

DEPARTMENT OF ORNITHOLOGY

George F. Barrowclough

Joel L. Cracraft,
Lamont Curator, Division Chair

Brian T. Smith

CENTER FOR BIODIVERSITY AND CONSERVATION

Ana Luz Porzecanski, Director

HAYDEN PLANETARIUM

Neil deGrasse Tyson,
Frederick P. Rose Director

SACKLER INSTITUTE FOR COMPARATIVE GENOMICS

George Amato, Director

SOUTHWESTERN RESEARCH STATION

Geoffrey Bender, Director

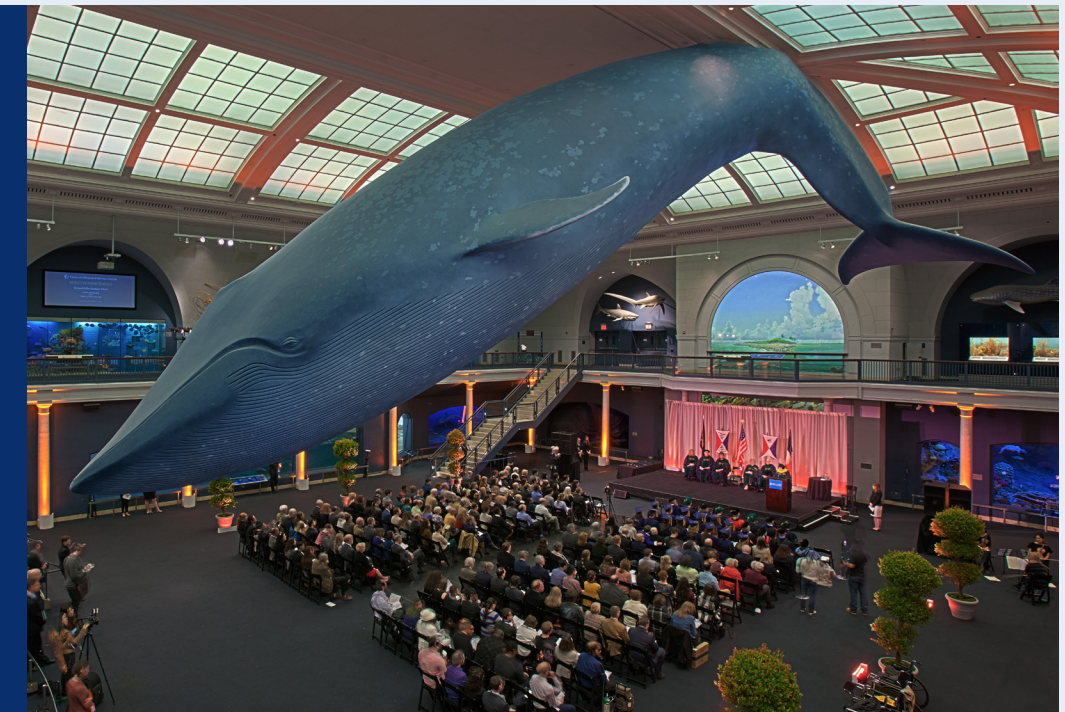
RESEARCH LIBRARY

Thomas Baione,
Harold Boeschstein Director

Richard Gilder Graduate School Commencement

October 5, 2015

Dr. Mee-mann Chang, one of China's preeminent paleontologists, received an honorary degree at the ceremony. In her remarks, Dr. Chang told graduates that globalization and improved international collaboration have raised expectations for today's scientists and teachers.



2015 RICHARD GILDER GRADUATE SCHOOL GRADUATES

PH.D. DEGREE IN COMPARATIVE BIOLOGY

PHILLIP BARDEN

"Ants (*Hymenoptera: Formicidae*) Through Space, Time, and Sociality: A History from Amber."

Advisors: David A. Grimaldi, James M. Carpenter

ANDRE LUIZ GOMEZ DE CARVALHO

"A Revision of the Lizards of the Subfamily *Tropidurinae* (*Tropiduridae*) with Special Reference to *Tropidurus* Wied, 1825."

Advisor: Darrel R. Frost

MARIA EUGENIA LEONE GOLD

"New Insights on the Evolution of Flight in Dinosaurs Using Novel CT and PET Technology."

Advisor: Mark A. Norell

CARLY MELISSA TRIBULL

"Molecular and Morphometric Phylogenetics of *Dryinidae* and *Bethylidae* (*Hymenoptera: Chrysoidea*)."

Advisors: James M. Carpenter, David A. Grimaldi

MASTER OF ARTS DEGREE IN TEACHING (EARTH SCIENCE)

SARA DROTZER

REBECCA EIDELMAN

MEREDITH FICHMAN

KEVIN GOSTOMSKI

KATHLEEN HANSON

WILLIAM HUDACEK

DAVID ANTHONY MURRAY

ERIN RICHLEY

AVANEL RILEY

DANIEL ROSENSTEIN

REBECCA SAUNDERS

JESSICA SHAROFF

MEG STEWART

RICHARD WEISS

14

GRADUATES RECEIVING
M.A. DEGREE IN TEACHING

100%

SUCCESS RATE FOR
NYS CERTIFICATION
AMONG GRADUATES

100%

OF GRADUATES
RECEIVE EMPLOYMENT
OFFERS

6,600

STUDENTS IN NEW YORK
STATE BEING TAUGHT BY
PROGRAM GRADUATES

PROGRAM HIGHLIGHTS:

Exploring Cutting-Edge Science, Celebrating Cultures

MORE THAN

180,000

ATTENDEES AT PUBLIC PROGRAMS

39

YEARS OF MARGARET MEAD FILM FESTIVAL

1

ADULT DIGITAL FLIGHT SCHOOL

Museum Education and Employment Program (MEEP) Turned 20

20

YEARS OF PAID SUMMER INTERNSHIPS IN SCIENCE COMMUNICATION

600+

COLLEGE-AGED STUDENTS EMPLOYED SINCE 1996

500+

TOURS GIVEN TO CAMP GROUPS EACH SUMMER

11

ROLLING CARTS STAFFED WITH TOUCHABLE ITEMS



JULY 14, 2015



PLUTO FLYBY WITH NASA'S NEW HORIZONS

Hosted by Curator Denton Ebel, Director of Astrovisualization Carter Emmart, and Frederick P. Rose Director of the Hayden Planetarium Neil deGrasse Tyson, this special event featured live links to New Horizons mission control and real-time visualizations of the probe's historic mission as well as opportunities to speak with mission personnel.

OCTOBER 22 - 25, 2015

MARGARET MEAD FILM FESTIVAL: "THRESHOLDS"

In the spirit of Margaret Mead, this 39th annual festival continued to push the boundaries of visual anthropology and documentary film. For the first time in the festival's history, the Margaret Mead Filmmaker Award was shared by two filmmakers: Kim Beamish for *Tentmakers of Cairo* and Iiris Härmä for *Leaving Africa: A Story of Friendship and Empowerment*.

NOVEMBER 22, 2015



HACKATHON: HACK THE DINOS WITH BRIDGEUP: STEM

Data scientists from around New York and Brown scholars from the Museum's BridgeUp: STEM program participated in this 24-hour challenge to hack the Museum's paleontology databases and then demonstrated the new tools they developed for scientists.

DECEMBER 9, 2015

NEW SCIENCE, NEW SOLUTIONS: CHANGING THE FUTURE FOR AT-RISK YOUTH

Hosted by Museum Trustee Anna Deavere Smith, this event asked whether science, ethics, and law can identify new paths out of poverty. Panelists included Ana Bermudez, Frances Champagne, Fagan Harris, Bruce McEwen, and Dorothy Roberts.

JUNE 1, 2016

SciCAFE: EXPLORE21 CUBA

Expedition members Ana Luz Porzecanski and Angelo Soto-Centeno discussed the 2015 expedition and new avenues for scientific collaboration.

WHAT ARE YOU MADE OF?

This series of weekend events tied to the special exhibition *The Secret World Inside You* gathered samples of microbes from a group of people representing a wide range of ages and hometowns—our visitors—for the Healthy Microbiome Project.



MAY 14, 2016

APRIL 5, 2016

ANNUAL ISAAC ASIMOV MEMORIAL DEBATE: IS THE UNIVERSE A SIMULATION?

Hosted by Frederick P. Rose Director of the Hayden Planetarium Neil deGrasse Tyson, the panel included David Chalmers, professor of philosophy at NYU, Zohreh Davoudi, theoretical physicist at MIT, James Gates, theoretical physicist at the University of Maryland, Lisa Randall, theoretical physicist at Harvard, and Max Tegmark, cosmologist from MIT.

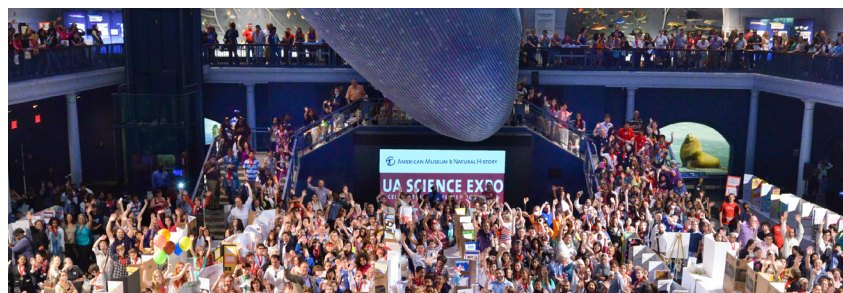
DECEMBER 27, 2015

KWANZAA: ENERGIZE, RECOGNIZE!

Doug E. Fresh headlined this year's celebration, featuring Linda Humes, master drummers Sanga of the Valley, LeeAnet Noble, and Harlem School of the Arts Legacy Ensemble.



JUNE 4, 2015



12TH ANNUAL URBAN ADVANTAGE SCIENCE EXPO

The Museum hosted the annual expo for this science enrichment program, a partnership with seven other cultural institutions and the New York City Department of Education that in fiscal year 2016 reached 790 teachers and 77,600 students in 281 middle schools across all five boroughs.



Professional Development for Teachers

MORE THAN

4,000

K-12 TEACHERS PARTICIPATED IN PROFESSIONAL DEVELOPMENT ONSITE AND ONLINE

2,000

TEACHERS AND ADMINISTRATORS PARTICIPATED IN ONSITE PROGRAMS

110,000

STUDENTS REGISTERED IN MUSEUM'S MASSIVE OPEN ONLINE COURSES FOR SCIENCE EDUCATORS THROUGH 2016

EXHIBITION HIGHLIGHTS:

Scientific Storytelling in Three Dimensions

7

EXHIBITIONS OPENED ONSITE

14

TRAVELING EXHIBITIONS

19

VENUES

6

COUNTRIES

8

SPACE SHOWS

70

VENUES

66

CITIES WORLDWIDE

OPENED OCTOBER 13, 2015



OPULENT OCEANS

Curated by Melanie L.J. Stiassny, Herbert R. and Evelyn Axelrod Research Curator, in collaboration with Tom Baione, Harold Boeschstein Director of the Museum's Research Library

Inspired by the book *Opulent Oceans: Extraordinary Rare Book Selections from the American Museum of Natural History*, this exhibition included 46 exquisite reproductions from 33 rare and beautifully illustrated scientific works documenting the diversity of the world's ocean life.

NOVEMBER 7, 2015 - AUGUST 14, 2016



THE SECRET WORLD INSIDE YOU

Co-curated by Susan Perkins and Rob DeSalle, Curators in the Division of Invertebrate Zoology

The Secret World Inside You explored the rapidly evolving science surrounding the human microbiome and how it is reshaping our ideas about human health.

EXHIBITION CREDITS

THE SECRET WORLD INSIDE YOU

Generous support for *The Secret World Inside You* and its educational resources have been provided by the Paul and Irma Milstein Foundation and the Milstein Family.

The Secret World Inside You is proudly supported by the Janssen Pharmaceutical Companies of Johnson & Johnson.

The Secret World Inside You is supported by the Science Education Partnership Award (SEPA) program of the National Institutes of Health (NIH).

THE TITANOSAUR

Generous support for *The Titanosaur* exhibit has been provided by the Susan S. and Kenneth L. Wallach Foundation.

DINOSAURS AMONG US

The Museum gratefully acknowledges the Richard and Karen LeFrak Exhibition and Education Fund.

Dinosaurs Among Us was proudly supported by Chase Private Client.

Additional support was generously provided by Dana and Virginia Randt.

THE BUTTERFLY CONSERVATORY

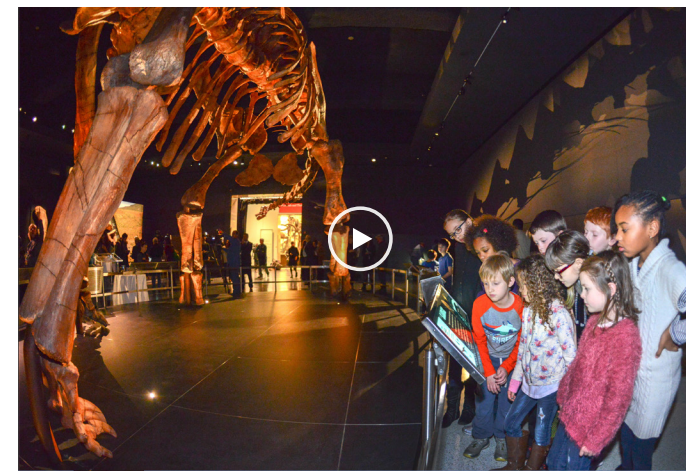
Generous support for *The Butterfly Conservatory* has been provided by the Eileen P. Bernard Exhibition Fund.

CROCS: ANCIENT PREDATORS

Crocs: Ancient Predators in a Modern World was created by Peeling Productions at Clyde Peeling's REPTILAND.

OPULENT OCEANS

The presentation of *Opulent Oceans: Extraordinary Rare Book Selections from the American Museum of Natural History* at the American Museum of Natural History is made possible through the generosity of the Arthur Ross Foundation.



The Titanosaur

122

FEET LONG

BASED ON

84

FOSSIL BONES

WEIGHED

70

TONS IN LIFE

LIVED ABOUT

100 million

YEARS AGO

JANUARY 15, 2016

THE TITANOSAUR

Curated by Mark Norell, Macaulay Curator of Paleontology

In 2016, the Museum added another must-see exhibit to its world-famous fossil halls: a cast of a 122-foot-long sauropod dinosaur that was discovered in the Patagonian region of Argentina in 2014 and excavated by a team from Museo Paleontologico Egidio Fergulio led by Jose Luis Carballido and Diego Pol, who received his Ph.D. in a joint program between Columbia University and the American Museum of Natural History. When the exhibit opened, the cast was displayed with five of the 223 original fossils recovered in Patagonia, including a colossal 8-foot femur.

MARCH 18, 2016 - JANUARY 2, 2017



DINOSAURS AMONG US

Curated by Mark Norell, Macaulay Curator of Paleontology

Dinosaurs Among Us explored the transition of dinosaurs that dominated the planet for around 170 million years into a new, small, airborne form: birds.

SEASONAL EXHIBITS

JULY 4, 2015 - NOVEMBER 29, 2015

SPIDERS ALIVE!

Visitors encountered more than 20 species of live arachnids, fossils, and larger-than-life models in this returning exhibition.

SEPTEMBER 5, 2015 - MAY 29, 2016

THE BUTTERFLY CONSERVATORY

The annual live exhibit returned with hundreds of live, free-flying tropical butterflies from around the world.

MAY 28, 2016 - JANUARY 2, 2017



CROCS: ANCIENT PREDATORS IN THE MODERN WORLD

Offering a close look at a group of reptiles that has flourished for more than 200 million years, this exhibition featured life-sized dioramas, interactive exhibits, and more.

REPORT OF THE CHIEF FINANCIAL OFFICER

Fiscal Year 2016 Marked Another Year of Solid Financial Performance

Due to continued strength in visitor attendance and fundraising as well as ongoing financial discipline, the Museum generated positive net unrestricted operating revenues of \$114,274 in fiscal year 2016. This positive outcome was the net result after transfers of designated contributions and other revenues to plant and long-term investments.

The Museum's net assets decreased by \$5.3 million, from \$902.1 million to \$896.8 million, largely due to the effect of global market volatility on the Museum's endowment during fiscal year 2016. Despite this slight decrease in fiscal year 2016, over the last four fiscal years, the Museum's net assets increased by \$214.4 million, or 31%, due to consistently strong Museum operations, continued strength in fundraising, endowment growth of over \$100.0 million, restructuring of the Museum's long-term debt as well as reductions in the Museum's liabilities for postretirement healthcare.

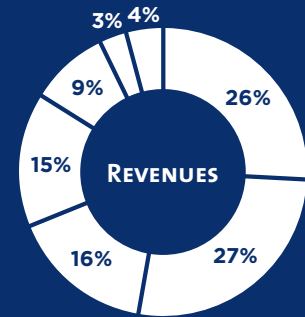
UNRESTRICTED OPERATING RESULTS

During fiscal year 2016, the Museum's annual Unrestricted Operating Revenues and Support increased by \$3.1 million, from \$183.2 million to \$186.3 million. Annual Unrestricted Operating Expenses, together with transfers, also increased by \$3.1 million, from \$183.1 million to \$186.2 million for the same period, resulting in net unrestricted operating revenue and support of \$114,274 during fiscal year 2016.

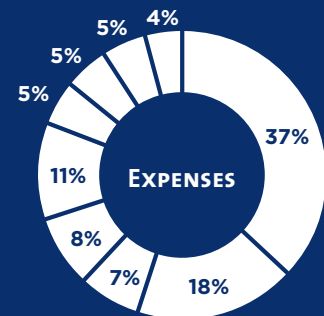
The Museum continued to enjoy elevated attendance levels during fiscal year 2016. As a result, attendance-related revenues (\$49.4 million) remained the largest source of unrestricted operating revenue.

The Museum continued to receive substantial operating and programmatic support from Trustees, other individuals, foundations, and corporations, as well as the City of New York, the State of New York, and the federal government. During fiscal year 2016, contributions and grants used to fund Museum operations, including a portion of net assets released from restrictions, totaled \$50.4 million. Additionally, the Museum received unrestricted operating support from the City of New York, including funding for certain energy and pension costs, totaling \$16.3 million. The City of New York also provided capital support to the Museum (see "Capital Expenditures").

Unrestricted Operating Revenues And Expenses



- 26% VISITOR CONTRIBUTIONS AND ADMISSIONS
- 27% CONTRIBUTIONS AND GRANTS*
- 16% ENDOWMENT AND RELATED FUNDS*
- 15% AUXILIARY ACTIVITIES
- 9% THE CITY OF NEW YORK
- 3% MEMBERSHIP
- 4% MISCELLANEOUS REVENUE AND OTHER FEES



- 37% SCIENTIFIC RESEARCH, EDUCATION, AND EXHIBITION
- 18% GUARDIANSHIP, MAINTENANCE, AND OPERATING COSTS
- 7% COST OF GOODS SOLD AND OTHER EXPENSES OF AUXILIARY ACTIVITIES
- 8% GENERAL AND ADMINISTRATIVE
- 11% TRANSFERS TO FUND PAYMENT OF DEBT SERVICE
- 5% FUNDRAISING AND MEMBERSHIP
- 5% COMMUNICATIONS
- 5% VISITOR SERVICES
- 4% INFORMATION TECHNOLOGY

* INDICATES A PORTION OF NET ASSETS RELEASED FROM RESTRICTIONS

CAPITAL EXPENDITURES

In fiscal year 2016, the Museum invested \$25.1 million to fund priority capital improvement projects to meet infrastructure and security needs as well as permanent exhibition hall renovations and new scientific facilities. As in the past, the Museum funded its capital improvements from a variety of sources, including the City of New York, State of New York, private donations, and the Museum's endowment.

The Museum recognized non-cash depreciation expense of \$31.3 million during fiscal year 2016, which exceeded the Museum's \$25.1 million investment and resulted in a decrease of the value of the Museum's physical plant of \$6.1 million, from \$414.4 million to \$408.3 million.

DEBT AND OTHER LIABILITIES

The Museum's liabilities increased by \$7.0 million during fiscal year 2016, from \$401.4 million to \$408.4 million. The increase in liabilities was largely attributable to a \$12.6 million increase in the valuation of the Museum's interest rate exchange liabilities

related to its debt, reflecting lower interest rates used to value these liabilities. During fiscal year 2016, the Museum made principal payments of \$3.0 million on its long-term debt and reduced borrowings on lines of credit to zero.

ENDOWMENT FUNDS

The return on the Museum's endowment was -3.2% in fiscal year 2016, reflective of volatile worldwide equity markets. Net of planned withdrawals from the endowment to provide funding for Museum operations and capital expenditures, as well as gifts and pledge payments to the endowment, the market value of the endowment decreased by \$40.2 million in fiscal year 2016, from \$648.0 million to \$607.8 million owing to market volatility.

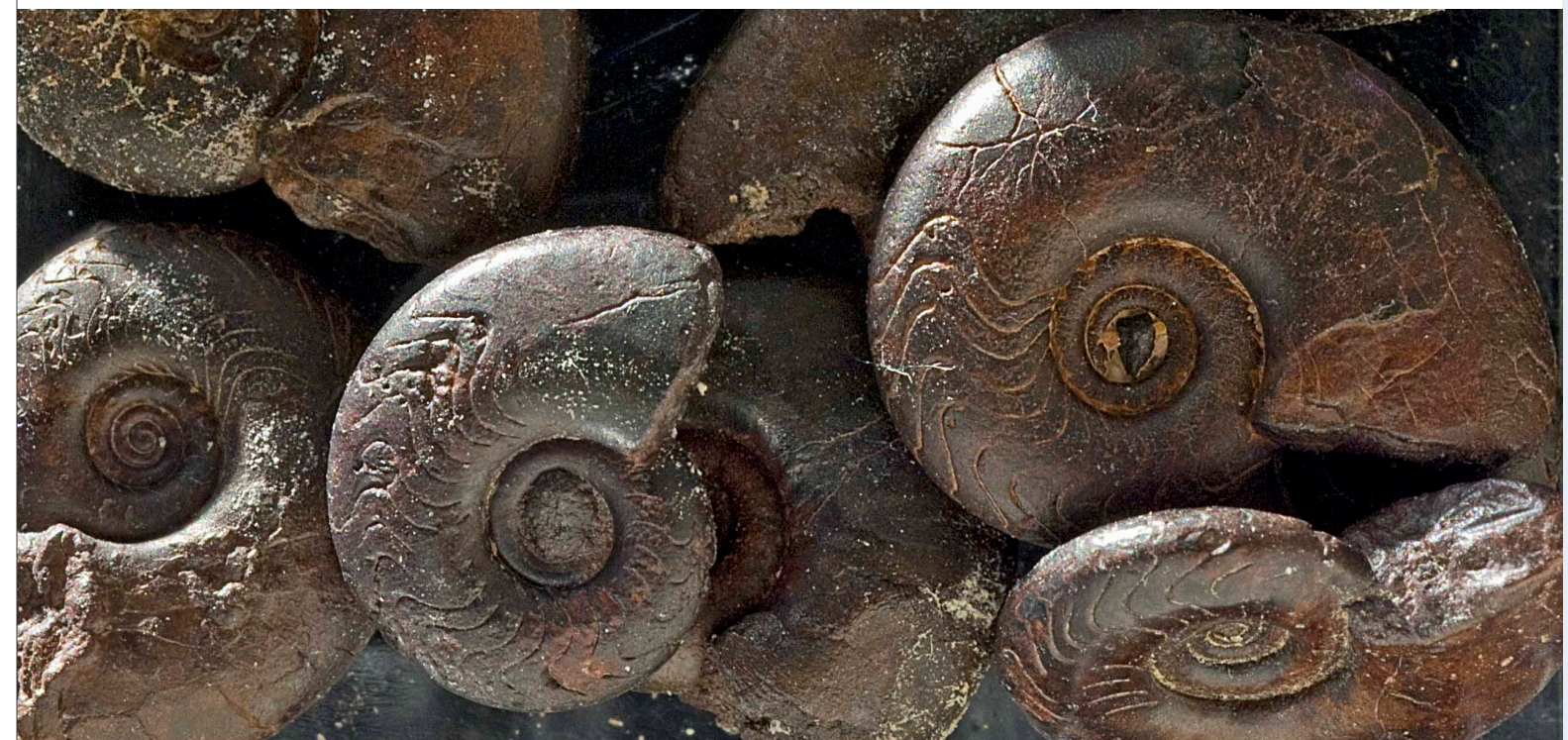
The Museum's endowment asset allocation is intended both to drive investment return and to provide protection in volatile markets. The Museum's endowment funds are invested by independent investment managers in diversified equity and fixed income securities and are overseen by the Museum's Investment

Committee. As of June 30, 2016, the Museum's endowment was invested as follows:

MARKETABLE EQUITIES	39%
ABSOLUTE RETURN/HEDGED EQUITY FUNDS	38%
MARKETABLE FIXED INCOME	3%
MARKETABLE REAL ASSETS	2%
PRIVATE INVESTMENT PARTNERSHIPS	14%
CASH EQUIVALENTS	4%
TOTAL	100%

THE IMPORTANCE OF CONTRIBUTIONS AND GRANTS

The Museum continued to benefit greatly from the extraordinary generosity of its private and public supporters. During fiscal year 2016, the Museum raised a total of \$132.7 million in support of its operations, programs, capital improvements, and endowment—a major endorsement of the importance and impact of the Museum's work in science, education, and exhibition. As a result, the Museum continued to balance its operating budget, enhance its programmatic offerings, and make improvements to its infrastructure and facilities.





FINANCIAL STATEMENTS

CONDENSED SUMMARY OF CONSOLIDATED STATEMENTS OF FINANCIAL POSITION

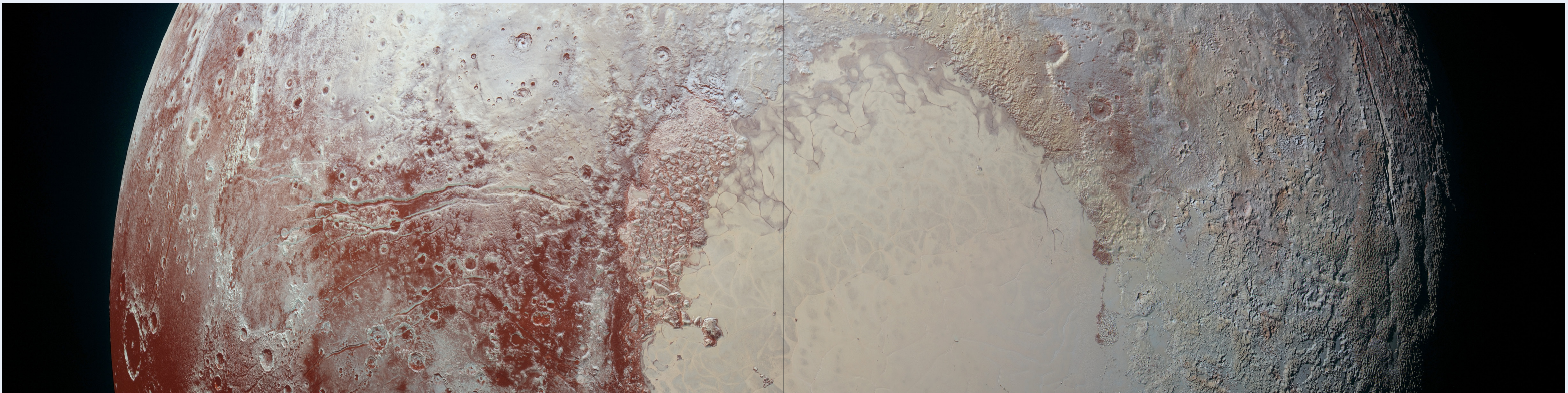
These statements are summarized for the fiscal years ending June 30, 2016, and June 30, 2015, and excerpted from the audited financial statements. A complete set of the audited financial statements is available on amnh.org.

ASSETS	FY 2016	FY 2015
Cash and other operating assets	\$ 139,978,902	\$ 136,367,734
Contributions and grants receivable, net	140,755,918	95,669,995
Long-term investments, at fair value	616,135,884	657,011,130
Plant and equipment, net	408,317,384	414,430,344
TOTAL ASSETS	\$ 1,305,188,088	\$ 1,303,479,203
LIABILITIES		
Accounts payable and other liabilities	\$ 128,795,865	\$ 118,783,582
Bonds and loans payable	279,638,769	282,640,279
TOTAL LIABILITIES	\$ 408,434,634	\$ 401,423,861
NET ASSETS		
Unrestricted	\$ 274,516,865	\$ 317,649,126
Temporarily restricted	419,914,942	402,065,800
Permanently restricted	202,321,647	182,340,416
TOTAL NET ASSETS	\$ 896,753,454	\$ 902,055,342
TOTAL LIABILITIES AND NET ASSETS	\$ 1,305,188,088	\$ 1,303,479,203

CONSOLIDATED STATEMENTS OF ACTIVITIES—UNRESTRICTED

These statements are summarized for the years ended June 30, 2016, and June 30, 2015, and excerpted from the audited financial statements. A complete set of the audited financial statements is available at amnh.org.

OPERATING REVENUE AND SUPPORT	FY 2016	FY 2015
Investment return designated for operations	\$ 19,844,004	\$ 19,171,332
Contributions and grants	30,568,006	27,100,377
Operating support from the City of New York	16,296,675	18,303,807
Visitors' contributions and admissions	49,423,737	49,665,228
Membership fees	6,617,511	6,488,515
Auxiliary activities	27,305,113	29,775,349
Miscellaneous fees and other revenue	6,654,225	6,104,779
Net assets released from restrictions	29,635,855	26,580,495
TOTAL OPERATING REVENUE AND SUPPORT	\$ 186,345,126	\$ 183,189,882
OPERATING EXPENSES	FY 2016	FY 2015
Scientific research	\$ 35,728,689	\$ 34,494,631
Education	25,108,950	21,181,822
Exhibitions	7,470,584	8,923,607
Membership	2,324,771	2,206,623
Visitor services	8,709,788	8,193,262
Auxiliary activities	13,892,601	18,140,512
General and administrative	16,040,166	15,973,694
Fundraising	6,308,614	6,433,035
Communications	9,170,041	7,852,245
Information technology	7,180,344	6,513,906
Guardianship, maintenance, and operating costs	32,962,798	32,240,144
TOTAL OPERATING EXPENSES	\$ 164,897,346	\$ 162,153,481
Designated contributions and transfers to plant and long-term investments	21,333,506	20,903,688
OPERATING REVENUE AND SUPPORT IN EXCESS OF OPERATING EXPENSES, DESIGNATED CONTRIBUTIONS, AND TRANSFERS	\$ 114,274	\$ 132,713
NON-OPERATING REVENUE, SUPPORT AND EXPENSES	FY 2016	FY 2015
REVENUE AND SUPPORT FOR PLANT		
Contributions, grants, and miscellaneous revenue	\$ 249,047	\$ 2,062,508
Capital support from the City of New York	5,360,346	3,701,732
Net assets released from restrictions	2,970,460	70,460
Transfer from long-term investments and operations to plant	18,788,597	18,820,738
PLANT EXPENSES		
Interest and related expenses	\$ 9,745,314	\$ 10,042,999
Change in value of interest rate exchange agreements	12,641,987	2,330,582
Depreciation and amortization	31,416,247	31,273,682
Plant expenses not capitalized	401,987	144,170
Write-off of deferred bond issuance costs	-	314,816
LONG-TERM INVESTMENTS AND OTHER		
Contributions and bequests	\$ 2,161,930	\$ 982,654
Investment return in excess of amounts designated for operations and plant	(28,816,907)	(13,023,750)
Net assets released from restrictions	10,771,513	12,314,341
Transfers from plant and operations to long-term investments and other, net	2,544,908	2,082,950
Other pension-related activities	(3,070,894)	4,211,636
CHANGE IN UNRESTRICTED NET ASSETS	\$ (43,132,261)	\$ (12,750,267)



BOARD OF TRUSTEES As of June 30, 2016

OFFICERS

Lewis W. Bernard
Chairman

Ellen V. Futter
President

Christopher C. Davis
Vice Chairman

Louis V. Gerstner, Jr.
Vice Chairman

David S. Gottesman
Vice Chairman

Richard S. LeFrak
Vice Chairman

Linda R. Macaulay
Vice Chairman

Roberto A. Mignone
Vice Chairman

Charles E. Phillips, Jr.
Vice Chairman

Theodore A. Mathas
Treasurer

Christine A. Varney
Secretary

TRUSTEES

Lewis W. Bernard

Jackie Bezos

Scott L. Bok

Tom Brokaw

Christopher C. Davis

Vivian H. Donnelly

Nancy B. Fessenden

Tina Fey

Ellen V. Futter

Louis V. Gerstner, Jr.

Richard Gilder

Joseph H. Gleberman

Robert G. Goelet,
Chairman Emeritus

Sibyl R. Golden

David S. Gottesman

Peggy Hamburg

Marlene Hess

Richard E. Jaffe

Helene L. Kaplan

Katheryn P. Kempner

Richard S. LeFrak

John Lykourazos

Linda R. Macaulay

Victor Marrero

Theodore A. Mathas

Rebekah Mercer

Lorne Michaels

Roberto A. Mignone

Alexandra Mondre

Edwin H. Morgens

Charles H. Mott

Valerie S. Peltier

Charles E. Phillips, Jr.

Virginia Hearst Randt

Shaiza Rizavi

Theodore Roosevelt IV

Frank V. Sica

Anne Sidamon-Eristoff,
Chairwoman Emerita

Laura Baudo Sillerman

Anna Deavere Smith

Peter J. Solomon

Christine A. Varney

Kenneth L. Wallach

Tamsen Ann Ziff

EX-OFFICIO TRUSTEES

Hon. Bill de Blasio
Mayor of the City of New York

Hon. Melissa Mark-Viverito
Speaker of The Council of the City of New York

Hon. Scott M. Stringer
Comptroller of the City of New York

Hon. Gale A. Brewer
President of the Borough of Manhattan

Hon. Mitchell Silver
Commissioner of the Department of Parks and Recreation

Hon. Tom Finkelpearl
Commissioner of the Department of Cultural Affairs

Hon. Carmen Fariña
Chancellor of the New York City Department of Education

HONORARY TRUSTEES

Roger C. Altman

Philip F. Anschutz

William S. Beinecke

Stephanie Bell-Rose

Melinda Blinken

Daniel Brodsky

Raymond G. Chambers

Donald K. Clifford, Jr.

Archibald Cox, Jr.

Steven A. Denning

L.F. Boker Doyle

Fiona Druckenmiller

John L. Eastman

Hughlyn F. Fierce

Emily H. Fisher

Tom Freston

Victor F. Ganzi

Helene D. Gayle

Elbridge T. Gerry, Jr.

Earl G. Graves

David A. Hamburg

Richard A. Jalkut

Harry P. Kamen

Deborah C. Kessler

Frederick A. Klingenstein

David H. Komansky

Karen J. Lauder

Shelly B. Lazarus

Ilene Sackler Lefcourt

William M. Lewis, Jr.

Thomas E. Lovejoy

Shirley M. Malcom

Norman S. Matthews

Eugene R. McGrath

Edward H. Meyer

Irma Milstein

Morris W. Offit

Jeremiah P. Ostriker

Richard D. Parsons

Kathleen I. Powers

Alan Rappaport

Richard L. Revesz

Richard Robinson

Jonathan F. P. Rose

Janet Ross

Jack Rudin

Ralph L. Schlosstein

Mary C. Solomon

Constance Spahn

Carroll L. Wainwright, Jr.

Rosalind P. Walter

Judy H. Weston

Edward O. Wilson

COMMITTEES OF THE BOARD OF TRUSTEES As of June 30, 2016

AUDIT

Christine A. Varney,
Chairman
Lewis W. Bernard
Nancy B. Fessenden
Richard E. Jaffe
John Lykouratzos
Charles H. Mott

BUDGET AND FINANCE

Theodore A. Mathas,
Chairman
Lewis W. Bernard
Nancy B. Fessenden
Ellen V. Futter
Marlene Hess
Richard E. Jaffe
Linda R. Macaulay
Edwin H. Morgens
Charles H. Mott
Theodore Roosevelt IV
Frank V. Sica

BUILDING AND GROUNDS

Valerie S. Peltier,
Chairman
Lewis W. Bernard
Ellen V. Futter
Sibyl R. Golden
Richard S. LeFrak
Victor Marrero
Peter J. Solomon

COLLECTIONS

Linda R. Macaulay,
Chairman
Lewis W. Bernard
Nancy B. Fessenden
Ellen V. Futter
Sibyl R. Golden
Peggy Hamburg
Helene L. Kaplan
Katheryn P. Kempner
Rebekah Mercer
Roberto A. Mignone
Theodore Roosevelt IV

COMMITTEE ON TRUSTEES AND GOVERNANCE

Peter J. Solomon,
Chairman
Lewis W. Bernard
Ellen V. Futter
Marlene Hess
Helene L. Kaplan
Victor Marrero
Shaiza Rizavi
Christine A. Varney

EXECUTIVE

Lewis W. Bernard,
Chairman
Tom Brokaw
Christopher C. Davis
Vivian H. Donnelley
Nancy B. Fessenden
Ellen V. Futter
Louis V. Gerstner, Jr.
Sibyl R. Golden
David S. Gottesman
Helene L. Kaplan
Richard S. LeFrak
Linda R. Macaulay
Theodore A. Mathas
Roberto A. Mignone
Charles H. Mott
Valerie S. Peltier
Charles Phillips, Jr.
Theodore Roosevelt IV
Anne Sidamon-Eristoff
Laura Baudo Sillerman
Peter J. Solomon
Christine A. Varney
Kenneth L. Wallach

EXECUTIVE COMPENSATION

Christopher C. Davis,
Chairman
Lewis W. Bernard
Nancy B. Fessenden
Ellen V. Futter
David S. Gottesman
Helene L. Kaplan
Charles H. Mott
Theodore Roosevelt IV
Anne Sidamon-Eristoff
Kenneth L. Wallach

OFFICERS

Lewis W. Bernard,
Chairman
Christopher C. Davis
Ellen V. Futter
Louis V. Gerstner, Jr.
David S. Gottesman
Richard S. LeFrak
Linda R. Macaulay
Theodore A. Mathas
Roberto A. Mignone
Charles E. Phillips, Jr.
Christine A. Varney

PLANNING

Christopher C. Davis,
Chairman
Lewis W. Bernard
Jackie Bezos
Nancy B. Fessenden
Ellen V. Futter
Louis V. Gerstner, Jr.
David S. Gottesman
Helene L. Kaplan
Linda R. Macaulay
Roberto A. Mignone
Anne Sidamon-Eristoff
Laura Baudo Sillerman
Christine A. Varney

SCIENCE POLICY

Louis V. Gerstner, Jr.,
Chairman
Lewis W. Bernard
Scott L. Bok
Tom Brokaw
Vivian H. Donnelley
Nancy B. Fessenden
Ellen V. Futter
Joseph H. Gleberman
Robert G. Goelet
Sibyl R. Golden
Peggy Hamburg
Richard E. Jaffe
Katheryn P. Kempner
Linda R. Macaulay
Roberto A. Mignone
Edwin H. Morgens
Valerie S. Peltier
Frank V. Sica
Anne Sidamon-Eristoff
Kenneth L. Wallach

COMMITTEES OF THE MUSEUM, PROJECT COMMITTEES, AND ADVISORY COUNCILS As of June 30, 2016

DEVELOPMENT (CAMPAIGN)

Lewis W. Bernard,
Chairman
Tom Brokaw
Christopher C. Davis
Ellen V. Futter
Linda R. Macaulay
Allison Mignone, Vice-Chair
Theodore Roosevelt IV
Anne Sidamon-Eristoff
Laura Baudo Sillerman
Peter J. Solomon

EDUCATION POLICY

Laura Baudo Sillerman,
Chairman
Lewis W. Bernard
Jackie Bezos
Christopher C. Davis
Vivian H. Donnelley
Nancy B. Fessenden
Ellen V. Futter
Sibyl R. Golden
Helene L. Kaplan
Rebekah Mercer
Alexandra Mondre
Charles E. Phillips, Jr.
Virginia Hearst Randt
Anne Sidamon-Eristoff

EXHIBITION POLICY

Tom Brokaw,
Chairman
Lewis W. Bernard
Ellen V. Futter
Helene L. Kaplan
Richard S. LeFrak
Lorne Michaels
Virginia Hearst Randt
Anne Sidamon-Eristoff
Mary C. Solomon
Anna Deavere Smith
Rosalind P. Walter
Ann Ziff

RICHARD GILDER GRADUATE SCHOOL

Helene L. Kaplan and
Vivian H. Donnelley,
Co-Chairmen
Lewis W. Bernard
Nancy B. Fessenden
Ellen V. Futter
Sibyl R. Golden
Shaiza Rizavi
Anne Sidamon-Eristoff
Laura Baudo Sillerman

INVESTMENT

Roberto A. Mignone,
Chairman
Lewis W. Bernard
Scott L. Bok
Ellen V. Futter
Joseph H. Gleberman
John Lykouratzos
Linda R. Macaulay
Alan Rappaport

LIBRARY

Nancy B. Fessenden,
Chairwoman
Lewis W. Bernard
Ellen V. Futter
Sibyl R. Golden
David S. Gottesman
Alexandra Mondre
Constance Roosevelt
Theodore Roosevelt IV

ORAL HISTORY PROJECT COMMITTEE

Nancy B. Fessenden,
Chairman
Lewis W. Bernard
Ellen V. Futter
Sibyl R. Golden
Anne Sidamon-Eristoff

CENTER FOR BIODIVERSITY AND CONSERVATION ADVISORY COUNCIL

Joseph H. Gleberman,
Chairman
Vivian H. Donnelley, Vice Chair
Richard E. Jaffe, Vice Chair
John Alexander
Lewis W. Bernard
Peggy Bewkes
Melinda Blinken
Scott L. Bok
Margaret Hess Chi
Roberta Denning
Pamela S. Farkas
Nancy B. Fessenden
Emily H. Fisher
Ellen V. Futter
Joshua Ginsberg
Sibyl R. Golden
Paul E. Graf
Kathryn Hearst
Karen J. Lauder
Thomas E. Lovejoy
Edwin H. Morgens
Valerie Ohrstrom
Valerie S. Peltier
Theodore Roosevelt IV
Ross Sandler
Marion Schwartz
Anne Sidamon-Eristoff
Constance Spahn
Judson B. Traphagen
Edward O. Wilson

SCIENTIFIC STAFF

George Amato
Robert DeSalle
Michael J. Novacek
Susan Perkins
Ana Porzecanski
Eleanor J. Sterling

GIFTS AND GRANTS

PUBLIC FUNDERS

FEDERAL

Institute of Museum and Library Services
National Aeronautics and Space Administration
National Endowment for the Arts
National Endowment for the Humanities
National Institutes of Health
National Science Foundation
United States Department of Defense
United States Department of Education
United States Department of Energy
United States Department of the Interior
United States Fish and Wildlife Service

STATE

New York State Council on the Arts
New York State Education Department

CITY

Mayor of the City of New York
Manhattan Borough President
New York City Department of Cultural Affairs
Council of the City of New York

TRUSTEES, INDIVIDUALS, FOUNDATIONS, CORPORATIONS AND ORGANIZATIONS

\$1,000,000 AND ABOVE

Anonymous
Christopher C. Davis, Shelby Cullom Davis Charitable Fund
Louis V. Gerstner, Jr., Gerstner Family Foundation
Sibyl R. Golden
David S. and Ruth L. Gottesman, The Gottesman Fund
Mr. Richard S. LeFrak, The Richard S. and Karen LeFrak Charitable Foundation, Inc.
The Pussycat Foundation
Mrs. Constantine Sidamon-Eristoff, The Howard Phipps Foundation
Susan S. and Kenneth L. Wallach Foundation

\$500,000 TO \$999,999

Anonymous (3)
Dr. Kathryn W. Davis*
Nancy B. and Hart Fessenden
William Randolph Hearst Foundation

Mr. and Mrs. Thomas L. Kempner, Jr.
Macaulay Family Foundation
Anne and Charles H. Mott
Virginia Hearst Randt and Dana Randt
The Red Crane Foundation
Drs. Marilyn and James H. Simons

\$250,000 TO \$499,999

Anonymous
Bloomberg Philanthropies
Scott and Roxanne Bok, Bok Family Foundation
Carnegie Corporation of New York
Mr. and Mrs. Russell L. Carson
Vivian H. Donnelley, Strachan Donnelley Family Charitable Lead Unitrust
Doris Duke Charitable Foundation
Charles Hayden Foundation
Eugene M. Lang Foundation
Mr. and Mrs. Howard P. Milstein, Paul and Irma Milstein Foundation
The Ambrose Monell Foundation
Mr. and Mrs. Edwin Morgens, The Wildwood Foundation
New York Life
The Pinkerton Foundation
The Simons Foundation
Anne and Bernard* Spitzer

\$100,000 TO \$249,999

Anonymous (3)
Accenture
Roger Altman and Jurate Kazickas
Bezos Family Foundation
The Peter and Carmen Lucia Buck Foundation
Chase Private Client
Con Edison
Filomen M. D'Agostino Foundation
Dalio Ocean Initiative
The Derfner Foundation
The Dyson Foundation
Herschell Emery
Google Inc.
Robert F. Gossett, Jr.
Dr. Margaret Hamburg and Dr. Peter Brown
Janssen Pharmaceutical Companies of Johnson & Johnson
The Anna-Maria and Stephen M. Kellen Foundation
Joella and John Lykouretzos
John D. and Catherine T. MacArthur Foundation
Linda R. and William E. Macaulay

MetLife Foundation
Panthera Corporation
Pepsi Cola Bottling Company of New York Inc.
Shaiza Rizavi and Jonathan Friedland
Julian Robertson
Robert Scully and Nancy Peretsman
Mary Solomon/GS Gives
The Tiffany & Co. Foundation
Tony and Nanar Yoseloff

\$50,000 TO \$99,999

Anonymous (3)
Acacia Conservation Fund
Altman Foundation
Philip F. Anschutz, The Anschutz Foundation
Mr. William S. Beinecke, Prospect Hill Foundation
Jill and Lewis Bernard, Mariposa Foundation
Mike and Jackie Bezos
Ray and Barbara Dalio
Mr. and Mrs. Steven A. Denning, The Sage Foundation
Michael DiBrizzi
Epstein Teicher Philanthropies
Victor F. and Patricia M. Ganzi
Richard Gilder, Gilder Foundation, Inc.
Mr. and Mrs. Robert G. Goelet
Anthony Gould
Kathryn O. Greenberg
Mr. and Mrs. Ephraim Greenwall
The Marc Haas Foundation
Marlene Hess and James D. Zirin, Hess Foundation, Inc.
Howard Hughes Medical Institute
Mr. and Mrs. Charles B. Johnson
David H. Koch
The Korein Foundation
Marshall P. and Rachael C. Levine
Kimberly and Greg Lippmann
Michael and Marjorie Loeb
Keryn and Ted Mathas
Mr. and Mrs. Thomas E. McInerney
Jennifer Mercer
Allison and Roberto Mignone
Sylvain Mirochnikoff and Rebekah Mercer
Alexandra and Greg Mondre
The William T. Morris Foundation
Valerie and Jeffrey Peltier
Henry Peterson Foundation
Jill and Alan Rappaport
The Rice Family Foundation
Mr. Andrew Right

Connie and Ted Roosevelt, Whalesback Foundation
Mr. and Mrs. E. John Rosenwald, Jr.
Janet C. Ross, J and AR Foundation
Mr. and Mrs. Mortimer D. A. Sackler
Ms. Elizabeth Schwarzman
Beth Kobliner Shaw and David E. Shaw
Frank V. Sica
Peter and Susan Solomon, Peter & Susan Solomon Family Foundation
Stockman Family Foundation Trust
Solon E. Summerfield Foundation, Inc.
Mr. and Mrs. Steven Tseng
The Vidda Foundation
Marshall M. Weinberg
Judy and Josh Weston Fund
Ann Ziff

\$25,000 TO \$49,999

Anonymous (3)
Penelope Ayers
Mr. Andrew Baker and Ms. Anne Baker
Ms. Peggy Brim Bewkes
Tom and Meredith Brokaw, The Brokaw Family Foundation
Margaret Hess Chi and Michael Y. Chi
Dr. Charles J. Cole and Ms. Carol R. Townsend
Joseph and Joan Cullman Conservation Foundation, Inc.
Edgar M. Cullman, Jr. Family
Cleveland H. Dodge Foundation, Inc.
The Lincoln Ellsworth Foundation
Mr. and Mrs. Philip A. Falcone
Emily H. Fisher and John Alexander
Jeanne Donovan Fisher
Alex Goor and Sharon Kim
Susanne and Paul Graf
Mr. and Mrs. Stephen Greenberg
Peter C. Hein and Anne Farley
Josefin and Paul Hilal
Hugoton Foundation
International Union for Conservation of Nature
Dana Wallach Jones and Michael T. M. Jones
Annette Kade Charitable Trust
Mr. and Mrs. Michael A. Kaufman
The Klein Family Foundation
The Leon Levy Foundation
Mr. and Mrs. David Littman
Mr. and Mrs. James M. Lober
Mr. and Mrs. Donald B. Marron
Mr. and Mrs. Keith Meister
The New York Community Trust
Oceanic Heritage Foundation
Valerie and Wright Ohrstrom
The Prospect Hill Foundation
May and Samuel Rudin Family Foundation, Inc.
Todd and Nobue Sandoz
Mr. and Mrs. Drew Saur

Mr. Peter W. Schweitzer
Dr. Michael Shara
Laura Baudo Sillerman, The Tomorrow Foundation, Inc.
Aaron and Betty Lee Stern Foundation
Mr. and Mrs. James Stern
Judson B. Traphagen
Wildlife Conservation Society
Aerin Lauder Zinterhofer and Eric Zinterhofer

\$10,000 TO \$24,999

Anonymous (7)
Joseph and Sophia Abeles Foundation, Inc.
Daniel D. Adams and Dr. Manon Cox
Mr. and Mrs. Jason Ader
The Annenberg Foundation
Arcus Foundation
The Barker Welfare Foundation
Mr. and Mrs. Uzi Benabraham
Richard A. and Amelia Bernstein
Mr. Hans-Peter Biemann
Mr. John Bleckman and Ms. Katherine Bleckman
Mr. Charles Borrok
Mr. Christopher Bray
The Daniel and Estrellita Brodsky Family Foundation
Ralph M. Cestone Foundation, Inc.
Raymond G. Chambers, MCJ Amelior Foundation
Charina Foundation, Inc.
Chervenak-Nunnalle Foundation
Mr. and Mrs. Anthony Civale
Louis and Virginia Clemente Foundation
The Abby and David Cohen Family Foundation
Milary Olson and Steven B. Cohen
Mr. and Mrs. Bertram J. Cohn
Conservation International
Ms. Anne F. Cowett
Mr. Frederick Cowett
Michael and Marilyn Dee
The Gladys Kriebel Delmas Foundation
Douglas and Susanne Durst
Ms. Helena Durst and Mr. Mark James Domino
Mr. and Mrs. Steven Einhorn
Niko Elmaleh
Stephanie and Michael Ferdman Fund
Ellen V. Futter
The Gardner Grout Foundation
Nancy A. Garvey
Dr. Paul W. Glimcher and Dr. Barbara Knappmeyer
Herman Goldman Foundation
Perry and Donna Golkin
Andrew S. Goodwin, Plymouth Hill Foundation
Richard Gordon
Carolyn Gould
John and Amy Griffin
Mr. and Mrs. Lawrence Guffey
Mr. and Mrs. Jeffrey R. Gural

Mr. and Ms. Gregory J. Hall
Ms. Anne Hathaway
Craig Hauser
Mr. and Mrs. William R. Hearst III
The Margarita and John Hennessy Family Foundation
Dr. Tiffany Herlands and Mr. Ronny Barnea
Mr. Dave Hitz
Mr. William O. Hunt
Mr. and Mrs. Carl C. Icahn
The Carl Jacobs Foundation
Amy and John Jacobsson
Helene and Mark Kaplan
Karen Katen
Anoush Khoshkish and Irene Miller
F.M. Kirby Foundation, Inc.
Chester Kitchings Family Foundation
Elysbeth Kleinhans
Kristy and Jonathan Korngold
Richard P. Krasnow and Nancy Meyrich
Kimberly Kravis and Jonathan Schulhof
Mr. and Mrs. Doug Kreeger
Damian Law
Alice Lawrence Foundation, Inc.
Shelly B. Lazarus
The Lehoczy Escobar Family
Will and Mary Leland
Judy C. Lewent and Mark Shapiro
Dorothy Lichtenstein
Mary D. Lindsay
Yen Liow and Eeling Lim
Amanda and Thomas Lister
Mr. and Mrs. Vincent A. Mai, The Mai Family Foundation
Phyllis Mailman
Frank Markus
V. and L. Marx Foundation
Mr. and Mrs. David E. Massengill
Diane and Adam E. Max
Mr. and Mrs. Clement McGillicuddy
Mr. and Mrs. Eugene R. McGrath
Mr. and Mrs. Scott Mead
R. K. Mellon Family Foundation
C. Jay Moorhead Foundation
Mr. and Mrs. Michael A. Moran
Mr. and Mrs. Laurence J. Nath
Nancy and Morris W. Offit
Gerry Ohrstrom
Susan Packie
Mr. and Mrs. Chandresh Patel
Peter G. Peterson and Joan Ganz Cooney
Orr Pitts Family Charitable Trust
The Marjorie Merriweather Post Foundation
The Reiss Family Foundation
Ruth Magness Rollins
Jonathan F. P. Rose, Lostand Foundation
Mrs. Frederick P. Rose

* Deceased

Jack and Susan Rudin, The Rudin Foundation, Inc.
Patricia E. Saigo, M.D.
Dr. and Mrs. Carl Saphier
Val and Min-Myn Schaffner
Sarah I. Schieffelin Residuary Trust
Rob Schlein and Emily Kroenlein
Adolph and Ruth Schnurmacher Foundation, Inc.
Neal and Jacqueline Shear
Sidney, Milton and Leoma Simon Foundation
Mr. and Mrs. Ravi Sinha
Mrs. Marjorie Smith
Constance G. Spahn
Mrs. Charline Spekter
Dr. Neil Stahl and Dr. Jayne Raper
Jane & Francis Stein Foundation
Dr. Ian M. Tattersall
Grace, Sharon, and Alex Volckhausen
Mr. and Mrs. Max von Zuben
Peter and Mary Beth Weinberger
Mr.* and Mrs. Edward Weisselberg
Laura B. Whitman and Thomas C. Danziger
Mr. and Mrs. Herbert S. Winokur
Yale University
Martin Zaretsky
The Donald and Barbara Zucker Foundation, Inc.

\$5,000 TO \$9,999

Anonymous (5)
Ms. Alyson Archer and Mr. John Archer
Henry H. Arnhold
Jody and John Arnhold
Jonathan Babkow and Maia Rubin
Mary E. Benner
Craig Bergstrom and Victoria Weld-Bergstrom
Mr. and Mrs. Robert Biggar
Mr. and Mrs. Richard S. Braddock
Jennifer Bruder Lavin and Edward Lavin
Reverend and Mrs. C. Frederick Buechner
Mr. Robert Carneiro
Jessica and Bryan Cho
Bruce E. Cobern
Mr. and Mrs. Stephen Colbert
Dr. Joel Cracraft
Mr. and Mrs. Jesse Damon
Mr. and Mrs. Peter Daneker
Mr. and Mrs. Dinyar Devitre
Joe and Diana DiMenna
The Max and Victoria Dreyfus Foundation, Inc.
Mr. and Mrs. Larry D. Droppa
Ducommun and Gross Family Foundation
Mr. George Eberstadt and Ms. Cynthia Young
Elephant Rock Foundation
Mr. and Mrs. R. Bradford Evans
Cece and Richard Fabbro
Mr. and Mrs. Lewis Frankfort
Ms. Jennifer Friend and Mr. John Szewczuk
Mr. Charles Fritsch and Ms. Cynthia Walpole

Heather and Robert Gallivan
Mr. and Mrs. Hunter Gary
Mr. and Mrs. Arthur Gelfand
David and Kathleen Glaymon
John and Nandita Glazer
Katja Goldman and Michael W. Sonnenfeldt
Mr. and Mrs. Gary Goldring
Eric S. Goldstein and Dr. Tamar Goldstein
Mr. Bert Gunter and Mrs. Roberta Gunter
Mr. Daniel S. Haas
Mary W. Harriman Foundation
Huyler C. Held Memorial Fund
Ms. Malda Hibri and Mr. Robert Eisner
Mr. and Mrs. Lawrence D. Hite
David A. Hoffenberg/Sidney Stern Memorial Trust
Jennifer Huntley
Lynette and Richard Jaffe, The Jaffe Family Foundation
Mr. and Mrs. Ian G. John
The Kandell Fund
Suzanne M. Kavetas
Ms. Jo-Linda Keith
Ms. Amy Khoudari and Ms. Frances Greenstein
Helen Kimmel
King's College London
Mr. and Mrs. Timothy Kislung
Melissa Thomas and David Koepp
Ms. Jean M. Kouri
David and Amy Liebowitz
Lincoln Institute of Land Policy
Mr. and Mrs. Lawrence H. Linden
Mr. and Mrs. Ira A. Lipman
Barbara Page and John Liu
Mr. and Mrs. David B. Ludwig
Tamara and Kevin MacMillan
Mr. and Mrs. Evan Malik
Honorable Victor Marrero
Mr. and Mrs. William Marth
Norman S. and Joanne B. Matthews
Dolly and Charles Mayer, Jr.
Friedrike Merck
Mr. and Mrs. William Michaelcheck
Mr. and Mrs. Robert Millard
Dr. Diana M. Moore
Mr. and Mrs. Lee J. Morakis
Mr. and Mrs. Alexander Morcos
Mr. and Mrs. Bill Moyers
Ellen J. Myers
National Film Preservation Foundation
Jeff and Jieun Nitka
Mr. and Mrs. David O'Brien
Mr. and Mrs. Ned Offit
Dr. David Orentreich
Dr. Louis B. Pieper, Jr., DVM
Mr. and Mrs. Robert W. Pittman
Quebec-Labrador Foundation
Mr. and Mrs. Richard Reiss
Judith and Burton Resnick

John R. Robinson and Barbara Robinson Family
David Rockefeller
Dr. Robert F. Rockwell
Rolex Watch USA, Inc.
Isabel Rose
Adrian Ross
The Rudin Foundation, Inc.
Barbara Saltzman
Elaine L. Saul
Viktoria and Alan Schragger
The Seinfeld Family
Catherine and Andrew Sidamon-Eristoff
Elizabeth Sidamon-Eristoff and Hunter Lewis
Mr. and Mrs. Imran Siddiqui
Talbot and Carter Simonds Foundation
Mr. and Mrs. Martin Small
Mr. Carl R. Spadaro
Jeff Spychala
Mrs. Philip A. Straus
Mr. and Mrs. Jeff Tarr
Mark and Leigh Teixeira
Jeannie Tseng and Colin Rust
Christine A. Varney
Varnum De Rose Charitable Remainder Annuity Trust
Mrs. Anne Via McCollough and Mr. David McCollough
Holly Wallace
Mr. Michael K. Wilson and Ms. Adeline Fong
Ann Eden Woodward Foundation
Migs Woodside

\$2,500 TO \$4,999

Anonymous (5)
Eric Altmann
Joseph Alexander Foundation, Inc.
American Ornithologists' Union
Karl Anderson and Marissa Shorestein
Rita Antanir Posin and Hana Ohayon
Yoni Arbel and Leona Clague
Mr. and Mrs. Peter A. Aron
Anne H. Bass
Mr. and Mrs. Anson H. Beard
The Honorable Lucy Wilson Benson
Dr. Alice O. Berkowitz and Mr. Norman R. Berkowitz
William Kenneth Block
Mr. Marshall Blonsky and Ms. Mariaelena Lopez
Bloomberg LP
Jason Biegel and Susan Buchner
Mr. and Mrs. Samuel C. Butler
Mr. and Mrs. Gerald Chait
Mrs. David A. Cofrin
Joan and Harvey Cohen
Steven and Alexandra Cohen Foundation
Community Foundation for Greater Buffalo
Felipe A. Coronel
Mr. Rahul Culas and Ms. Jena Deng
Mr. and Mrs. Gordon J. Davis

Mr. and Mrs. Richard R. Davis
Shelia M. Davis and Dr. Irv Kron
Elisabeth de Picciotto
Mr. and Mrs. Paul del Balso
Christine Denham and Robert W. Stein
Christopher Denicolo
Dr. Naomi Donnelley and Joe Butler
Mr. Peter Du and Ms. Victoria Li
Edmund C. Duffy
Ralph and Laura Durso Foundation
Mr. and Mrs. John L. Eastman, Jr.
Ms. Joan Egrie
Lisa and Sanford B. Ehrenkranz
Mr. and Mrs. Steve Eick
Susan and Leonard Feinstein
Frank Finkel
Peter Hess Friedland
Friedman Family Foundation
Charles A. Fritz III
Mr. and Mrs. Lawrence Furtsch
Peter Gartland
Scott Geller
Mr. and Mrs. Scott Gewirtz
Alexandra Gardiner Goelet
Mr. and Mrs. Aaron J. Goldberg
The Goldie Anna Charitable Trust
Mr. and Mrs. Bennett J. Goodman
Eugene and Emily Grant
Phyllis Green and Randy Cowen
Ellen K. and Lawrence R. Gross
Mrs. Patricia Gruber
Agnes Gund
Mr. Anuj Gupta
Mr. and Mrs. Robert G. Gutenstein
Merrill G. and Emita E. Hastings Foundation
Kathleen D. Hale
Ms. Trish and Hannah Hamlin
Mr. and Mrs. Theodore Hartley
Kyle Haug
Michael and Sandy Hecht
Anya C. M. Herz and Dr. Andrew Shiva
Carolyn Hickman and John R. Campbell III
Mr. Douglas Hitchner and Ms. Larissa Martell
Mr. and Mrs. John Hughes
Aurelia Ion
Max Kade Foundation, Inc.
Mr. Jason Katz
The Honorable Thomas H. Kean
Henry Kibel
Charles and Jane Klein
Mr. Justin Korsant
Mr. Bill G. Lambert and Ms. Daily Lambert
Sidney and Helaine Lerner
Betty and John Levin
Mr. and Mrs. William Milton Lewis, Jr.
Ethel Lipsitz
Arthur L. Loeb
Mr. and Mrs. James I. Magid

Mr. and Mrs. Peter L. Malkin
Ms. Pamela Manice
Jeffrey and Cynthia Manocherian
Mr. and Mrs. Joshua Margolin
Tom Marshall and Kathy Keneally
Mr. Malcom McLain and Ms. Mary Maher
Constance and H. Roemer McPhee
Edward and Sandra Meyer Foundation Inc.
Millburn Free Public Library
David Shaw Neill
Amy Neu and Daniel Neu
Roy and Jenny Niederhoffer
William S. Nye
Daniel and Stefanie Offit
Mr. and Mrs. Martin Okner
Mrs. William Oppenheim
Chips and Sarah Page
Mr. and Mrs. Kent R. Papsun
Dr. John Parascandola
Dr. M. Lee Pearce
Susy Pestana and Dan Jensen
Brian Pitz and Brinlea Johnson
Ms. Katherine E. Planitzer
Mr. and Mrs. Arthur Prince
Mr. and Mrs. Michael Reiss
Mr. Dominic Ricci and Ms. Jennifer Stalec
Drs. Valerie and John W. Rowe
Bryan and Aidan Rowley
Alfred and Ann Ruesch
Mr. and Mrs. Dennis Santella
Charles V. Schaefer
Mrs. Judith Scheide
Mrs. Lenore Scott
Tatiana Serafin and Mick Kalishman
Joanne L. Shrontz Family Foundation
Ms. Klara Silverstein and Ms. Lisa Silverstein
Melissa A. Slaybaugh
Marc S. Solomon
Dr. and Mrs. Peter Som
The Janet Stone Jones Foundation
Stop & Stor Charitable Fund
Drs. Charles and Alisa Thorne
Darlene Thoroughgood
Barbara and Donald Tober
Alexander and Catherine Traykovski
Bernardette Vaskas
Ms. Naomi Waletzky and Mr. Rowan Hajaj
Mary J. Wallach
Evelene Wechsler
Mr. David Worthington and Dr. Julie Stagers
Zeldin Family Foundation
Victoria Zoellner

\$1,000 TO \$2,499

Anonymous (9)
Mr. Arthur N. Abbey and Mrs. Diane Abbey
Mr. Adil Abdulali and Ms. Sohaila Abdulali

Mr. and Mrs. Adam Abelson
Carol and Robert Abrahams
Mr. and Mrs. David A. Ackert
Acorn Hill Foundation
Mr. Soterios Aggelatos
Matt H. Ahrens and Erin Smith Ahrens
M. Bernard and Elsie V. Aidinoff
Mr. David D. Alger
Ms. Rene Alkoff
Mr. Jeffrey Altman and Dr. Sara Jordan
Jose and Mary Alvarado
Stephen and Madeline Anbinder
Ben Appen and Leslie Chang
Ms. Sara Arlin
Ms. Linda Aronoff
Mrs. Helen Jean Arthur
Vera Miller Aryeh
Mr. and Mrs. Arnold Asrelsky
Mrs. Justine E. Auchincloss
Kym Aughtry
Lawrence T. Babbio, Jr.
Sheri Babbio
Ms. Elizabeth Gwaltney Baird
Ms. Carol Baker and Mr. Mark E. Stein
Elizabeth P. Ball
Mr. and Mrs. John T. Bandler
Mr. and Mrs. Timothy Barakett
Mr. and Mrs. Randall J. Barbato
Dora Barlaz and Noah Hanft
Sheila and David Barrett
Ms. Isabella Barrington
Mr. and Mrs. Thomas M. Barry
Mr. and Mrs. Louis C. Bartz
Ms. Patricia Bauman and Mr. John Landrum Bryant, Jr.
Mr. and Mrs. John E. Baumgardner
Martin and Maryann Baumrind
Reginald R. and Jameson A. Baxter
Mr. Richard Bayles and Ms. Gretchen Pusch
The Howard Bayne Fund
Dr. Kathryn and Mr. Bruce Beal
Mr. Joel S. Beam
Mr. and Mrs. Greg Beard
Mr. Victor Bearg
Mr. and Mrs. Richard I. Beattie
Mr. G. Gordon Behn and Mr. Christopher G. Behn
Ms. Margaret Beller and Ms. Elizabeth Beller
Ms. Heather Bellini and Ms. Marlene Nolasco
Sarah and Erik Belz
Dr. Georgette F. Bennett and Dr. Leonard S. Polonsky
Madeleine Bennett
Mr. Stephen C. Berger and Ms. Cynthia C. Wainwright
Mr. Craig Berkley and Ms. Judy Arttime Berkley
Mr. and Mrs. Gerald Bernaz
Mr. Joshua Berne and Ms. Amy Berne
Mr. Charles Bernheim and Ms. Rachel Bernheim
Elaine S. Bernstein and Erika Bernstein Kelble
Judith L. Biggs

* Deceased

Mr. and Mrs. James Bigham
Ms. Danielle Billera
Birdlife International
Ms. Loren Blackford and Mr. Michael Dubno
Mr. and Mrs. Sherwood C. Blake
Peter and Sofia Blanchard
Dr. and Mrs. M. Donald Blaufox
Ms. Leslie May Blauner and Mr. Andrew Blauner
Ms. Madeline Blinder and Mr. Alan Blinder
Lauren Blum and C. William Merten
Mr. and Mrs. Brad Blumenfeld
Mr. and Mrs. John Bognacki
Dr. Kevin Bohacs and Ms. Susan Mitterling
Mr. and Mrs. Michael R. Bonsignore
Ms. Eleanor Bookwalter
Mr. Mike H. Boston and Ms. Jennifer Boston
Dr. Brian Bosworth and Mrs. Lauren Freeman-Bosworth
Mr. and Mrs. George W. Bovenizer III
Mr. Jeff Bower and Ms. Laura Bower
Ms. Catherine Box and Mr. Jean-Baptiste Box
Victoria R. Boyt
Mr. and Mrs. Edward Brandman
Mr. and Mrs. John Britton
Catharine O. Broderick and Kevin Broderick
Mr. and Mrs. Geoffrey J. Brooks
Mr. Nick Brophy and Ms. Sarah Marie Martin
Jennifer Brorsen and Richard DeMartini
Mr. Frank Brosens
Mr. and Mrs. Clyde Brownstone
Lori R. Buchbinder and Raymond McDaniel
Mr. and Mrs. C. Austin Buck
John H. Buckner
Mr. William N. Buffett and Mrs. Susan Kennedy
Marcia Bull and A. Bliss McCrum
Judith and Robert Burger
Mr. Frank Burzik
Mr. Zachary Calamari
Matthew Cantor
Mr. and Mrs. Mark Carey
Robert B. Carey
Walter W. and Barbara I. Carey
Mr. Robert Caro
Mr. and Mrs. Arthur Carter
Mr. Eli Casdin
Central College
Stephen P. Chang
Ms. Debrah Lee Charatan and Mr. Steve Holm
Beverly and Herbert Chase
Dr. and Mrs. Paul Check
Cathy Chernoff
Mr. Rick Chesney
Ms. Diane M. Chesnut
Mr. Ajay Chheda and Ms. Jennifer Chheda
Mr. Lawrence T. Chien
Ms. Juliette Cho and Mr. Peter Kim
Mr. Alexander Clague and Ms. Beth Gannon
Mrs. Laura Clark and Ms. Marcia Clark

Dr. and Mrs. Jonathan D. Clemente
Donald K. Clifford, Jr.
Ms. Mary Ann Cloyd
Myrna Coffino
James Cohen and Barbara Carey
Adrienne and Jerry L. Cohen
Mr. Seth Cohen
Ms. Sharon Cohen and Dr. Matthew A. Cohen
Mrs. Marie H. Cole
Ms. Patricia Collins and Ms. Elizabeth Raposo
Mr. and Mrs. David Colton
Mr. and Mrs. Michael W. Conboy
Mr. William J. Constantine and Ms. Margaret Wellington
Ms. Kelly Consuelos and Mr. Mark Consuelos
Mr. and Mrs. Kevin Conway
Nancy C. and Bruce S. Cooper
Mr. and Mrs. Carlos A. Cordero
Victoria Costa and Jacob Carl Zydney
The Cowles Charitable Trust
Mr. Benjamin F. Crane
Mr. Russell Crawford and Ms. Tieasha Crawford
Ms. Austen Cruz
Ms. Rebecca Culley and Mr. Peter Lee
Susan R. Cullman and John Kirby
Mr. Ravenel Boykin Curry IV and Mrs. Celerie Kemble
Dr. and Mrs. John Curtis
Ms. Mary Curtis
Drs. Lawrence and Eileen Cutler
Ms. Nanci L. Czaja and Mr. Richard F. Czaja
Genevieve Da Silva and L. Schellie Archbold
Ms. Beverly Dale
Mr. Patrick Daly and Ms. Katherine Sinding
Dale S. Dancis
Mr. and Mrs. Michael Danziger
Mr. Justin Davda
Judy and Kim Davis
Mary G. Davis
Mrs. Andreina de Caraballo and Mrs. Agnes La Tour De Caraballo
Elizabeth De Cuevas
Ms. Siw De Gysser
Mr. and Mrs. Thomas de Neufville
Mr. and Mrs. Marc de Saint Phalle
Mr. David H. De Weese and Ms. Anne C. Heller
Jeffrey S. Dean, Ph.D.
Anna Deavere Smith
Ms. Jane Del Favero
Mr. and Mrs. Adrian Demko
Ms. Victoria DePalma
Ms. Naomi Diamond
Mr. and Mrs. David Dibble
Mr. and Mrs. Anthony L. DiBrizzi
Ms. Rebecca Dickerson and Mr. Nicholas Murray
Dr. JoAnn Difede
Dr. and Mrs. Peter DiFiore
Mr. John R. Donahue and Mr. Aaron Hobart

Ms. Margaret F. Donovan and Ms. Nancy Broderick
Mr. Gordon Douglas
Mr. and Mrs. L.F. Boker Doyle
Mr. Marin Dragojevic and Ms. Monica Faria
Ms. Jane Dresner Sadaka
Ms. Patricia E. Duffey and Mr. David Lambert
Mr. W. L. Duffey
Marybeth Dunham and Charles Mayfield, Jr.
Mr. Justin Durand
John F. Eagan
Mr. and Mrs. Blair W. Effron
Ms. J. Eggers
Camille and Peter Ehrenberg
Mr. and Mrs. John B. Ehrenkranz
Dr. Donald A. Ellis and Ms. Sherry S. Chang
Mrs. Alexandra Ernst and Mr. Garret Siegel
John and Deborah Evangelakos
Mr. Scott Fain and Ms. Hillary Mattson
Ms. Linda A. Fairstein
Michael A. Feder
Mr. and Mrs. Herbert Feinberg
Mr. Yoseph Feit and Ms. Edith Gross
Ms. Dina Felder and Mr. Eric Felder
Janet and George Felleman
Martha Feltenstein
Mr. Stanley Fenvesy and Ms. Doris Fenvesy
Dr. Evette Weil Ferguson and Mr. Scott Ferguson
Mr. Josean Fernandez
Mr. Lincoln Field and Ms. Kate Field
Holley and Russell Flagg
Mrs. Lawrence A. Fleischman
Mr. and Mrs. John J. Flynn
Ellen L. Fogle
Pamela and David B. Ford
Mrs. Mildred B. Forrell
B. Harrison Frankel
Dr. and Mrs. David F. Frankel
Mrs. Barbara J. Fried
Mr. and Mrs. J. Michael Fried
Mr. Paul Friedman
Mr. Robert A. Friedman and Mrs. Jane Grenadier Friedman
Ms. Susan Frye
Suzanne Frye, M.D.
Mrs. Genny G. Fua-Del Fierro and Mr. Jonathan DelFierro
Mr. George E. Fulcher and Dr. Danielle Warren
Mr. Mortimer B. Fuller
Mr. and Mrs. Kwok S. Fung
Mr. and Mrs. Francesco Galesi
Mr. and Mrs. Eric Garland
Mr. and Mrs. David M. Gay
Mr. Paul Geller and Ms. Meghan Schalk
Monica Gerard-Sharp
Mr. and Mrs. Elbridge T. Gerry, Jr.
Mr. Ned Gerstman
Ellen and Alex Gertsen
Melissa M. Gibbs

Tom and Marjorie Gilbert
Mr. Evan S. Giniger and Ms. Marisa da Silva
Mr. Thomas Giroux
Ms. Peggy Gizzarelli
Jordan Glaser and Hazel Weiser
Michael and Anne B. Golden
Mr. and Mrs. Scott Golden
Mr. Neil J. Goldmacher and Ms. Bari B. Goldmacher
Daniel and Libby Goldring
Mrs. Arlene Goldstein
Ronald Goldstock and Judith Friedman
Lawrence Golub
Joseph Gordon
Mr. Michael Gordon
Ann and Melissa Gottlieb
Mr. and Mrs. Laurence L. Gottlieb
Mr. David Gray and Mrs. Kathleen Jennings
Ms. Susannah Gray and Mr. John Lyons
Ms. Cheryl W. Green
William Green and Alyson Adler
Kim and Jeff Greenberg
David J. Greene Foundation, Inc.
Mr. and Mrs. Stewart Greenfield
Gail Gregg
Mr. John W. Gribble and Mr. Michael Gribble
Dr. and Mrs. Daniel Griffin
Mr. and Mrs. Alexander Grinberg
Loomis J. Grossman, Jr.
Aryn and Matt Grossman
Mr. and Mrs. Paul B. Guenther
Frank and Joanne Gumper
Mr. Pat Gunn
Mr. and Mrs. John G. Haggerty
Mr. and Mrs. Ryan Hagglund
Mr. Thomas G. Hamill and Honorable Bryanne A. Hamill
Lynne and Harold Handler
Ms. Jaime Harlock
William F. and Ruth Ann Harnisch
Mr. and Mrs. Joshua Harris
Ms. Hedy Hartman and Mr. Andrew Chait
Kim and Alan Hartman
Mr. and Mrs. Jonathan Hartofilis
Mr. and Mrs. Emmett J. Harty
Mr. John Hatzidakis
Mr. Thomas Haubenstricker and Ms. Anne Haubenstricker
Dr. Kathryn Hearst
Mr. and Mrs. Herman M. Heinemann
Dr. and Mrs. George F. Heinrich
Mr. Peter Heinrich and Ms. Cynthia Lilley
Heins Family
Marian S. Heiskell
Mr. John C. Henry and Ms. Amy Henry
Ilene and Jerry Herz
Alexandra and Paul Herzan
Mr. and Mrs. Benjamin Hesse

Mrs. Nancy S. Heymann and Ms. Erika Heymann
Brian and Tania Higgins
Dr. and Mrs. Kenneth J. Higgins
CAPT Deborah Ann Hinkley, MC, USN
Mr. and Mrs. Kenneth Hipkins
Mr. and Mrs. Dylan Hixon
Mrs. Frank W. Hoch
Constance M. Hoguet
Mr. and Mrs. Lofton Holder
Mr. and Mrs. Leo Hollein
Mr. and Mrs. Stephen Holodak
Mrs. Theodora W. Hooton
Dr. Leslie Howard
Mr. and Mrs. Robert L. Howard
Mr. and Mrs. John Hsu
Ms. Charissa Huan and Mr. Russel Chiming Huang
David J. Hubbard
The Hudson Bay Project
Mrs. Sophia Hudson and Mr. Daniel Riley
Mr. and Mrs. Matthew Hughey
Mr. and Mrs. John E. Hull
Mr. and Mrs. James E. Hunt
Mr. Fraser L. Hunter and Ms. Nina Huffman
Mr. Jeff Hunter
Peter Hutchings and Martha Wolfgang
Ms. Melody Hyllen-Davey and Mr. Bruce Davey
Ms. Mary Hynes
Adele Ilberman
Mr. David Iles
Mr. and Mrs. George B. Irish
Peter Anthony Irwin
John Mary and Bernard Jacobs Foundation, Inc.
Anita and Robert Jacobson
Fern Jaffe
Mr. Matthew Jagoda and Ms. Yang Lu
Mr.* and Mrs. Michael Jaharis
Richard A. Jalkut
Mrs. Margaret Jan and Mr. Alex Chi
Mr. and Mrs. Morton Janklow
Gloria F. Jarecki
Mr. and Mrs. Ignacio Jayanti
Mr. and Mrs. Vladimir Jelisavcic
Dr. Barbara Jessen and Ms. Ann Jessen
Drs. Ramesh and Lajwanti Jhaveri
Dr. Keith Johnson
M. Elaine Johnston
Ms. Corrina Jones
Thomas P. Jones
Mr. George Jovanoski
Joseph Kahn and Shannon Wu
Ms. Jackie Kaiko and Mr. Marshall Millsap
Ms. Elizabeth Kantor
Mr. Charlie Kaplan and Ms. Elaine Sun
Pat and Paul D. Kaplan
Mr. and Mrs. Ivar Kasaks
Suri Kasirer and Bruce Teitelbaum
Ms. Kim Kaufman and Mr. James A. Goldsmith

Mr. Clarence H. Kay, Jr.
Mr. and Mrs. Robert W. Kean
Mr. and Mrs. Kassahun Kebede
Mr. and Mrs. Richard Keefe
Laurie D. Kefalidis
Ms. Sandra Keinberger and Ms. Nina Keinberger
Norman Keller
Bicky and George Kellner
Mr. Robert E. Kempf
Mr. and Mrs. Donald M. Kendall
Mr. Robert M. Kern
Mr. and Mrs. Edward Kerschner
Dr. and Mrs. Hoshang J. Khambatta
Mrs. Linda Marie Khettry
Ms. Tracy Kimmel and Mr. James Florack
Ms. Laura King
Andrew Kipnes
Mr. Edward A. Kirtman and Mrs. Risa M. Schifter
Mr. and Mrs. Andrew Klein
Ms. Luisa Knapp
Ms. Joanne P. Kobel and Ms. Patricia Patterson
Ms. Judy Koch and Ms. Barbara J. Eler
Mr. Meyer Koplow and Mr. Michael Koplow
Jeremy R. Kramer and Dorothy Rebecca Davies
Andrea Krantz and Harvey Sawikin
Mr. Eric Krasnoff
Mr. George H. Krauss
Dorothy and David Kroenlein
Ms. Paula Krosky and Dr. Daniel Krosky
Mr. David Kuck
Mr. and Mrs. Edward P. Kujawa
Dr. and Mrs. Atul Kukar
Mr. and Mrs. Tomislav Kundic
Neil M. Kurtz MD and Susan E. Kurtz
Patrick LaMaster and Peggy Kennelly
Peter and Deborah Lamm
Joseph Laraia and Dr. Mary Motyl
The Larkin Family
Ms. Christine LaSala and Ms. Ellen J. Lipschitz
The Leonard and Evelyn Lauder Foundation
Nora Lavori
Mr. John Lawrence and Ms. Dee Adams
Ms. Geraldine Laybourne
Mary K. LeCroy
Mr. and Mrs. David Lederman
Mr. and Mrs. Raymond LeFebvre
Mr. and Mrs. Fred R. Leff
Mr. Lawrence Leibowitz and Ms. Tara G. Leibowitz
Mr. and Mrs. Frederic I. Leif
Dr. David Lennon and Ms. Antje Lennon
Mr. and Mrs. Beau Lescott
Mr. David Lester
Mr. and Mrs. Henry L. Levin
The Irene Levoy Foundation, Inc.
Dr. and Mrs. Jerome Levy
Mr. and Mrs. Melvyn Lewinter
Mr. and Mrs. Elias Liatsis

* Deceased

Ms. Susan B. Lindenauer and Mr. Arthur Lindenauer
Dr. John P. Linderman and Dr. Trudy M. Burke
Fritz and Lee Link
Mr. and Mrs. William Link
Ms. Loretta Linser
Amy and Steve Lipin
Ms. Cynthia Lippe and Mr. Jacob Lippe
Mr. Abraham C. Littenberg
Mr. Chien C. Liu
Joe and Clare LoCicero
Mrs. Amanda Loftin and Mr. Nate Barish
Mr. and Mrs. Craig Lombard
Ms. Ann M. Longmore
Mr. and Mrs. Alvin Loshak
Mr. and Mrs. Sherif Lotfi
Ms. Kate Loughran
Mr. and Mrs. Robert Lourie
Mr. Paul Love and Ms. Anna Dover
Mr. Terrence Lowenberg
The Albert G. Lowenthal Foundation
Mr. Robert MacNeil
Ms. Patricia Mahabir and Mr. Thameswar Mahabir
Ms. Anita M. Majetich
Ms. Zlatija Majstorovic
Ms. Esther A. Malamud and Mr. Eric R. Landau
Dr. and Mrs. Roy S. Malpass
Mr. and Mrs. Eric Mandelblatt
Mr. and Mrs. Stephen R. Manheimer
Mr. and Mrs. Henry J. Maxwell
Ms. Isabelle Marino
Lizzy and Bryce Markus
Mr. and Mrs. Thomas A. Martin
Mr. William Martini
Dr. Joseph Masci
Mr. and Mrs. Anthony E. Mason
Drs. Patrick and Linda Mastroianni
Ms. Christine Matthews
Mr. and Mrs. Marc Mazur
Mr. and Mrs. Philippe McAuliffe
Dr. Kevin McAuliffe and Dr. Katharine Frase
Mr. and Mrs. John A. McCaffrey
Ms. Louise H. McCagg
Mr. and Mrs. Bruce R. McCaw
Ms. Kay McCrosky
H. B. McEver
Mr. W. Jameson McFadden
Ms. Jan McHugh-Smith
Mr. John Meditz and Mr. Lukasz Jaremczak
Eugene Mercy, Jr.
Ms. Betsy Michel and Ms. Katie Michel
Mrs. Jo Christine Miles and Ms. Gloria Colon
Countess Anastasia T. Milonas and Ms. Claire Milonas
Mr. and Mrs. Eric Mindich
Sandra C. and Lowell A. Mintz
Ms. Susan Mintz
Elizabeth Miracky

Mr. and Mrs. Vikram Mody
Eben Moglen
Mr. Connor Monaghan and Ms. Kate Monaghan
Dr. Barbara W. Monsanto and Dr. Enrique Monsanto
Mr. and Mrs. William F. Morrill
Mr. Joseph C. Morris
Mr. and Mrs. Lester S. Morse
Mr. Jerome B. Moss and Ms. Olga Gottlieb
MPG Operations, LLC
Ms. Elaine Musselman
Dr. and Mrs. Charles W. Myers
Mr. and Mrs. Faris Naber
Mrs. Sherrie Nagin
Marylouise Napier and Daniel Zuzunaga
Drs. David and Rhoda Narins
Mr. Avi Nash and Ms. Sonia Nash Gupta
Mr. Robert L. Navin and Ms. Thais Roda Noya
Mr. James L. Nederlander and Ms. Margo Nederlander
Mr. and Mrs. George A. Needham
Mr. Tom Neff and Ms. Lyndon Haviland
Mr. Jeffrey L. Neuman and Ms. Patricia Machado
Mr. John Frederick Neuman and Ms. Andrea Neuman
Stephanie and Herbert Neuman
Mrs. Norman D. Newell
Mr. and Mrs. Michael A. Newhouse
Bruce Nicholas
Stephen Nicolai and Stuart Nicolai
David Nolan
Mr. Peter Norton
Mr. Richard Nottenburg and Ms. Katherine Nottenburg
Mr. and Mrs. Jamal Nusseibeh
Mr. Nick Ogurtsov and Ms. Desi Eagan
Ms. Joanne Omar
Mr. James Orphanides
Jonathan Orser
Dr. Lida Orzeck and Ms. Susan Miller
Ms. Pauleen B. Owen
Ms. Jessica Pacheco
Nicole and Bruce Paisner
Dr. Richard Palu and Ms. Teresa Zix
Mr. Mario Palumbo and Mr. Stefan Gargiulo
Dr. Anjali Pant and Mr. Ashish Pant
Mr. John Pantazis
Ms. Grace M. Parr
Parton/Bove Charitable Fund
Mr. and Mrs. Jeffrey Pash
Ms. Maria M. Patterson
Mr. Joseph G. Paul and Ms. Margot Bridger
Dr. Charles Peck and Ms. Rani Peck
Ms. Taylor Pedicone
Creighton Peet and Dana Weiss
Mr. and Mrs. Richard Penney
Dr. Robert Petrarca
Mrs. Maryann Pfeiffer and Mr. Richard Ellenbogen

Mr. Evan Picoult
Mr. Jean-Francois Picron
Ronnie Planalp
Mr. James R. Platt and Mr. Jeffrey Platt
Ms. Marietta Poerio
Mr. and Mrs. Len Poliandro
Mr. Darren Pollack
Mr. Justin Pollack and Ms. Suzanne Reisman
Mr. and Mrs. Zachary O. Pomerantz
Mr. and Mrs. Lawrence Portnoy
Deborah and Earl Potter
Mr. William Preinitz and Ms. Nancy Wilt
Jamie and Phil Prince
Mr. Peter Pticar
Mr. Gary R. Purwin and Ms. Lauretta Kayleigh
Ms. Jane Pyenson and Mr. Bruce Pyenson
Daniel Quinn and Anna Rita Quinn
Mr. and Mrs. Scott Radke
Mr. and Mrs. Paul Raether
Mr. and Mrs. Shikhar Ranjan
Mr. and Mrs. Austin Ratner
Mr. Brian Redman
Ms. Angela M. Reed
Mr. and Mrs. Charles W. Reed
Richard L. Revesz
Jonathan and Jessica Right
Sheila J. Robbins
Mr. William G. Robertson and Ms. Dorothy Murphy
Mr. George Roche
Sascha M. Rockefeller
Mr. and Mrs. James Roddy
John A. Rodger
Mr. Thomas Rodriguez and Ms. Therese Rodriguez
Ms. Cynthia Roeser
Felix and Elizabeth Rohatyn Foundation, Inc.
Mr. Julian Romano and Ms. Julia Popova
Theodore Roosevelt Association
Elizabeth E. Roosevelt
Mr. and Mrs. John Rorer
Susan and Elihu Rose Foundation
Ms. Laura Rose
Ms. Jill Rosenberg
Mr. Steven A. Rosenblum and Ms. Monique Witt
Mr. and Mrs. Jeff L. Rosenheim
Mr. Brian J. Rosenthal
Gaelin Rosenwaks
Mr. and Mrs. Cy Ross
Ms. Meg Roth and Mr. David Roth
Gail Ann Rothman
Mr. and Mrs. Karl L. Rubenacker
Rubin-Ladd Foundation
Ms. Mary Ruffano
Nina Rumbough
Mr. and Mrs. Kevin Ruscitti
Mr. and Mrs. Reade H. Ryan, Jr.

Ms. Patricia Ryan
Dr. and Mrs. Otto and Maria Sabando
Bonnie L. Sacerdote
Dr. Hans Sachse and Ms. Dolores Cherrington
Mr. and Mrs. Robert Safron
Ms. Courtney Sale Ross
Mrs. Faith Salie and Mr. John Semel
Mr. and Mrs. Louis J. Salvaterra
Mr. Joshua Sandbulte and Ms. Tracey Strauss
Mr. and Mrs. Paul J. Scariano
Mr. William Schaaf and Ms. Joy Chang
Mr. James M. Schell and Ms. Rose Mangat
Rita and Joseph B. Scheller
Mr. Antoine Schetritt and Ms. Amanda Brotman
Ms. Gleniss Schonholz
Mr. Rick Schulman and Ms. Debbie Schulman
Mr. and Mrs. Robert L. Schwartz
Mr. and Mrs. Jonathan Schwartz
Mr. William C. Scott and Mrs. Cindy Scott
Mr. Donald P. Seibert
Paul and Mary Seid
Pamela and Mel Shaftel
Shake Shack
Mr. and Mrs. Eugene Shanks
Mr. Daniel Shapiro
John M. Shapiro and Shonni J. Silverberg
Mr. and Mrs. Robert Shapiro
Mr. Jay Shayevitz and Ms. Susan Shayevitz
Mr. James W. Shea
Mr. and Mrs. David A. Sheehan
Barry A. Shenkman
Rochelle and Jesse Shereff
Mr. and Mrs. Craig Shouldice
Ian Shrank and Alexandra W. Logue
Ms. Zhanna Shulina
Mrs. Alexandra Shuman
Ms. Shirley A. Siegel
Mrs. Valerie Siener and Mr. G. Siener
Mr. and Mrs. Sandy Sigal
Marlys Silver
Boon Sim and Shiuan Wu
Esther Simon Charitable Trust
Mr. Neil Simon
Mr. Gideon Sims
Mr. Brett Singer and Ms. Randi Singer
Mr. and Mrs. Gary Singer
Michael Skarbinski and Ms. Laurel Sherwood
Mr. and Mrs. John Slapp
Mrs. Virginia Slaughter
Ms. Carole Sleeper and Mr. Nate Sleeper
Mr. Adam Smith
Mr. and Mrs. Derek Smith
Dr. P. R. Smith and Dr. M. Schulman
Ms. Iris Smyles
D. Edward I. Smyth and Mary Smyth
Ms. Elaine C. Snyder
Mr. Samuel Socolar

Ms. Abigail Solomon and Mr. Jason Teuscher
Mr. and Mrs. Howard Solomon
Dr. Robert Sommer
Mr. James Spagnoli
Honorable Joyce L. Sparrow
Mr. Thomas Spoto and Ms. Angelique Dab
Ms. Mary St. Martin and Mr. Matthew Messinger
Linda and Bill Starzman
Mr. and Mrs. Shad Stastney
Esta E. Stecher
Mr. and Mrs. Robert C. Steinman
Susan Steinsapir
David B. Sterling
Mr. James Stevenson and Ms. Josephine A. Merck
William P. Stewart
Daniel L. Stoddard
Dr. James A. Strauchen and Ms. Vivienne Strauchen
The Leila & Mickey Straus Family Charitable Trust
Ms. Elizabeth Stribling-Kivlan and Ms. Rebecca Cleary
Lee and Roger Strong
Mr. Steven H. Strongin and Dr. Alexis C. Strongin
Guy Miller Struve and Marcia Mayo Hill
Arlene Stuhl
Gabrielle & Arthur Ochs Sulzberger, Jr.
Mr. Senthil Sundaram
Dr. P. R. Sundaresan
Mr. and Mrs. Charles O. Svenson
Julie Kohn and Dan Swift
Jeffrey Taback and Inanna Donnelley
Mr. and Mrs. Robert Tannenhauser
Ms. Robyn Tarnofsky and Mr. Antony Ryan
Ms. Nancy T. Taubenslag and Mr. Mauri Rosenthal
Amy Taylor and Nelson A. Rockefeller, Jr.
Mr. and Mrs. Kenneth L. Telljohann
Roger Tilles
Ms. Marjorie Tiven
Jeffrey Tobias, M.D. and Ms. Bonnie Tobias
Mr. and Mrs. Graves Tompkins
D'Vera Topol
Mr. and Mrs. Daniel Toscano
Mr. James B. Tost
Ms. Cecily Trenka and Mr. Ron Trenka
Ms. Myrella Triana and Mr. Ken Gadow
Jean and Raymond Troubh
Mr. Joel Truman and Mrs. Sara Lustigman
Michael Tuch Foundation
Mr. Andrew Turk
Mr. Zachary K. Turner
University of Massachusetts
Uno Pizzeria & Grill
Mr. and Mrs. George Valencia
Mr. Robin van Bokhorst and Ms. Sarah Tartaglia
Joyce P. and Diego R. Visceglia Foundation
Mr. and Mrs. Roger W. Vogel
Mr. Markus Voorham and Ms. Vanessa Hicks-Voorham
Maria T. Vullo

Sue and Edgar Wachenheim III
Emily V. Wade
Mrs. Dorothy G. Waldron and Mr. Eric L. Waldron
Dr. Lucy R. Waletzky, M.D.
Ms. Sheila Walpin and Mr. Gerald Walpin
Mr. and Mrs. Leigh Walters
Douglas Warner
Mrs. Jan Beth Warner
Mr. Ariel Warszawski and Ms. Tara R. Dwyer
Dorothy Watson and Marjorie O. Watson
Mr. Richard S. Weeks and Ms. Candace C. Weeks
Mr. and Mrs. William Weiant
Mrs. John L. Weinberg
Dr. Samuel Weisman and Dr. Nancy Crown
Mr. Joel Weiss
Mr. and Mrs. Stephen Weiss
Mildred Weissman
Mr. Arne Werchick and Ms. Ruth Werchick
Mr. David Wetherbee
Ms. Ana Wheatcroft and Mr. Jonathan Kellner
Ms. Stephanie G. Wheeler
Mr. Sidney S. Whelan, Jr. and Ms. Anne S. McCook
Dr. and Mrs. Owen Whitby
Robert W. and Donna T. Whiteford
Mary Louise Whitmarsh
Dr. and Mrs. Wayne G. Whitmore
Mr. George Wibecan
Jarvis and Coke Anne Wilcox
Mr. Guy Williams and Ms. Melissa Hilton
Mr. and Mrs. Mitchell G. Williams
William E. Willis
Mr. Charles Perry Wilson and Mr. Ransom C. Wilson
Mr. Matthew Winkler and Mrs. Lisa K. Winkler
Mr. Douglas Wirls and Mrs. Iona Fromboluti-Wirls
Lisa and Richard Witten
Dr. Sabrina Wolfe and Dr. David Straus
Honorable and Mrs. James D. Wolfensohn
Mr. and Mrs. Jacob Wolfson
Charles O. Wood
Mr. David Wood
Ms. Vicki Wyan
Joy H. Wyatt and Graham S. Wyatt
Dr. R. D. B. Wynn
Mr. and Mrs. Ravi Yadav
Sawako Yamaguchi and Raymond Daddazio
Marc Stern and Kimberly Yellin
Ms. Anna Yelloz
Ms. Helena Tse Yeung
Janet B. York
Mr. and Mrs. Stanley Zabar
Ms. Mary L. Zaks
Ms. Francesca Zambello and Mr. Jackson McBryde
Mr. Richard A. Zucker and Mrs. Beth Zucker
Ari Zweiman and Ashley Timmer

CORPORATE PATRON PROGRAM

Anonymous (1)
21st Century Fox
Accenture
AB
American Express Company
AIG
ADP, LLC
AXA Foundation
Bank Hapoalim
Bank of America
BNY Mellon
BBC Worldwide Americas, Inc.
The Blackstone Group L.P.
Bloomberg LP
Bloomingdale's
Brown Brothers Harriman & Co.
Canon U.S.A., Inc.
Capital One Bank
Carl Zeiss Vision International
Chanel
Chase Private Client
Citi Foundation
Clifford Chance
Colgate-Palmolive Company
Condé Nast Publications
Con Edison
Cornerstone Research, Inc.
Credit Suisse
Charles A. Dana Foundation
The Dannon Company
Deutsche Bank
DeVries Public Relations
Elsevier
Emigrant Savings Bank
The Estée Lauder Companies Inc.
Events By Red Carpet, LLC
Facebook, Inc.
First Eagle Investment Management Foundation
First Manhattan Co.
Franklin Templeton Companies, LLC
GAMCO Investors, Inc.
GCM Grosvenor
General Atlantic LLC
General Electric Industrial Systems
GoldenTree Asset Management, LP
Goldfarb & Fleece
Goldman, Sachs & Co.
Google Inc.
Greenlight Capital, Inc.
The Guardian Life Insurance Company of America
Gunderson Dettmer, LLC
Hearst Corporation
HSBC Bank

IBM International Foundation
ING
ITOCHU International Inc.
J. Crew Group, Inc.
John Wiley & Sons, Inc.
Johnson & Johnson
JPMorgan Chase & Co.
KGS-Alpha Capital Markets, L.P.
Kobre & Kim
KPMG
Lennox Industries Inc.
Loews Corporation
M&T Securities, Inc.
Macy's
Marsh & McLennan Companies, Inc.
Marubeni America Corporation
Match MG
McGraw Hill Financial
McKinsey & Company, Inc.
Merck KGaA
MetLife, Inc.
Mission Media USA, Inc.
Mitsubishi International Corporation
Mizuho Financial Group
MongoDB
The Moody's Foundation
Jim Moran & Associates, Inc.
Morgan Stanley
MSCI, Inc.
Murphy Productions
New York Life
New York Private Bank & Trust
The New York Times Company
NPANDCO Limited
Ogilvy & Mather Worldwide
Orrick, Herrington & Sutcliffe LLP
Pall Corporation
Paul, Weiss, Rifkind, Wharton & Garrison
PepsiCo Inc.
Pfizer Inc.
PIMCO
PricewaterhouseCoopers LLP
Prometheus Global Media
Random House
RayLign Advisory, LLC
Restaurant Associates
Roche
The Rockefeller Group
Ropes & Gray
Shackman Associates International, Inc.
Shake Shack
Shire Realty Corporation
Skadden, Arps, Slate, Meagher & Flom LLP
Sony Corporation of America
Starcom Mediavest Group
Starz Network
Stifel
Sumitomo Corporation of America Foundation

Summit Productions, Inc.
TD Bank, N.A.
Teneo Holdings
Tiffany & Co.
Time Warner
Toyota
The Travelers Companies, Inc.
Trello, Inc.
UBS
Ultradent Products, Inc.
United Therapeutics Corporation
Uno Pizzeria & Grill
Viking Global Investors
Vontobel Asset Management
W. P. Carey Foundation
The Walt Disney Company
Warburg Pincus LLC
White & Case
H. W. Wilson
Xerox Foundation
Ziff Brothers Investments
Zubatkin Owner Representation

SUPPORTERS OF SPECIAL EVENTS

\$250,000 TO \$499,999

Accenture

\$100,000 TO \$249,999

Con Edison
Cravath, Swaine & Moore LLP
Christopher C. Davis, Shelby Cullom Davis Charitable Fund
Hearst
Joella and John Lykourazos
Allison and Roberto Mignone
New York Life
Mr. Ronald O. Perelman and Dr. Anna Chapman
Charles E. Phillips, Jr.
Christopher R. Redlich, Jr.
Laura Baudo Sillerman, The Tomorrow Foundation, Inc.
Drs. Marilyn and James H. Simons
Tishman Speyer

\$50,000 TO \$99,999

21st Century Fox
Roger Altman and Jurate Kazickas
Citi
Crestwood Equity Partners LP
Andrew Davis, Shelby Cullom Davis Charitable Fund
Davis Polk & Wardwell LLP
Mr. and Mrs. Steven A. Denning, The Sage Foundation
Jodie and John Eastman

Marlene Hess and James D. Zirin, Hess Foundation, Inc.
Invesco
Mr. and Mrs. Thomas L. Kempner, Jr.
Linda R. and William E. Macaulay
Mariposa Foundation
Melissa Meister
Alexandra and Greg Mondre
Morgan Stanley
Valerie and Jeffrey Peltier
Mr. Andrew Right
Ms. Elizabeth Schwarzman
Peter and Susan Solomon, Peter & Susan Solomon Family Foundation
Viacom Inc.

\$25,000 TO \$49,999

Aclara
Claire E. Bernard
Bezos Family Foundation
Scott and Roxanne Bok, Bok Family Foundation
Tom and Meredith Brokaw, The Brokaw Family Foundation
Mr. and Mrs. James J. Burke, Jr.
CityPASS—New York City
The Coca-Cola Company
Steven and Alexandra Cohen Foundation
Stephanie Coleman
Miriam and Peter Daneker
Mr. and Mrs. George David
Chris and Elizabeth Davis
Deloitte
Jay W. Eisenhofer and Ms. Anne P. Jameson
Nancy B. and Hart Fessenden
Franklin Templeton Investments
Victor F. and Patricia M. Ganzi
Mr. and Mrs. Ken Giuriceo
Thomas and Maarit Glocer
Sloan and David Greenspan
John and Amy Griffin
Mr. and Mrs. Lawrence Guffey
Jennifer Bruder Lavin and Edward Lavin
Kimberly and Greg Lippmann
Sylvain Mirochnikoff and Rebekah Mercer
Alice and Lorne Michaels
Millennium Pipeline Company LLC
Anne and Charles H. Mott
Michael W. Ranger
Shaiza Rizavi and Jonathan Friedland
Ralph Schlosstein, Schlosstein-Hartley Family Foundation
Shearman & Sterling LLP
Smart Grid Solutions
Tiffany & Co.
Venable LLP
Susan S. and Kenneth L. Wallach Foundation
Tony and Nanar Yoseloff
Ann Ziff

\$10,000 TO \$24,999

Bank of America
Barclays
Margaret Hess Chi and Michael Y. Chi
Columbia Threadneedle Investments
Dan Klores Communications
Michael J. Del Giudice
Delta Air Lines
Mr. and Mrs. Jamie Dimon
Discovery Communications
Cleveland H. Dodge Foundation, Inc.
Vivian H. Donnelly, Strachan Donnelly Family Charitable Lead Unitrust
Douglas and Susanne Durst
The Durst Organization
Energy
Tina Fey and Jeff Richmond
Mr. and Mrs. David Foley
General Electric
Global Strategy Group
Sibyl R. Golden
The Guardian Life Insurance Company of America
Kyle Haug
Mr. and Mrs. Carney Hawks
HBO
Ickes Enright McCabe
Elysabeth Kleinhans
Amanda and Thomas Lister
Margaret Munzer Loeb and Daniel Loeb
Keryn and Ted Mathas
Mitsubishi UFJ Financial Group
Mary and Garrett Moran
Mr. and Mrs. Laurence J. Nath
National Grid
Newmark Grubb Knight Frank
New York Stock Exchange
Mr. Adebayo Ogunlesi and Dr. Amelia Ogunlesi
Opower
Proskauer Rose LLP
Related Companies
Restaurant Associates
Amy Taylor and Nelson A. Rockefeller, Jr.
Rubenstein Associates, Inc.
May and Samuel Rudin Family Foundation, Inc.
Jack and Susan Rudin, The Rudin Foundation, Inc.
SAP America Inc.
Saturday Night Live
Seyfarth Shaw LLP
Bob and Eva Shaye
Silver Spring Networks
Silvercup Studios
Mr. and Mrs. Jeffrey Silverman
Mr. and Mrs. Larry A. Silverstein
Spectra Energy
The Gate
Time Warner Inc.
Diana and Roy Vagelos
VERIZON

Ginger and Keith Wallach
Judy and Josh Weston Fund
Sarah and Nathaniel Zilkha
Zubatkin Owner Representation, LLC

\$5,000 TO \$9,999

ABNY
Henry H. Arnhold
Mr. and Mrs. Peter A. Aron
Natasha Avanesians
Aliza Avital-Caplan
Candace C. Barasch
Ms. Sara Barelles
Benjamin Black
BNY Mellon
Janet and Peter Boris
Boston Properties
BuroHappold Engineering
Vincent and Linda Calarco
Drs. George and Mary Campbell
Mr. David J. Castellani
Raymond G. Chambers, MCJ Amelior Foundation
Dierdre and Michael Doheny
Edison Electric Institute
Niko Elmaleh
Event Network
Kira Fairman
Alison H. Feagin
Tom Freston
Mr. Brian Friedman
Nancy A. Garvey
Richard Gilder, Gilder Foundation, Inc.
Penny Gorman
GreyHealth Group
Dr. Tiffany Herlands and Mr. Ronny Barnea
Josefin and Paul Hilal
Hunton & Williams LLP
Intrepid Sea, Air & Space Museum
Lynette and Richard Jaffe, The Jaffe Family Foundation
Suzanne and James Jesse
Dana Wallach Jones and Michael T. M. Jones
Claudia and Jim Joyce
Kasirer LLC
Suzanne M. Kavetas
Alexandra and Gregory Kwiat
Dorothy and Cliff Lanier
Hans Li and Jennifer Kouvant
Mr. John McEnroe and Ms. Patty Smyth
Michelle Bergeron McMaster
McVicker & Higginbotham
Jennifer Mercer
Mrs. Henry W. Middleton
Mr. and Mrs. David Millstone
Ms. Alexandra Milstein
Mr. and Mrs. Richard Mishaan
Mr. and Mrs. Lee J. Morakis
Amanda Morcos

Mr. and Mrs. Edwin Morgens, The Wildwood Foundation
 James L. and Margo MacNabb Nederlander
 New York Mets
 Nicholson & Galloway
 Roy and Jenny Niederhoffer
 Mr. and Mrs. James A. Nolen
 Julia and Jamal Nusseibeh
 Orrick Herrington & Sutcliffe LLP
 Mr. and Mrs. Alan J. Patricof
 Nina and Mike Patterson
 Mr. and Mrs. Robert W. Pittman
 Elizabeth and Michael Reiss
 Jonathan and Jessica Right
 Janet C. Ross, J and AR Foundation
 Jack and Anita Saltz Foundation
 Linda S. Sanford
 Mr. and Mrs. Ross E. Schulman
 Alexandra Steel Scott and James Michael Scott
 Mr. and Mrs. Paul Segal
 Charlotte and Ottavio Serena di Lapigio
 Beth Kobliner Shaw and David E. Shaw
 Catherine and Andrew Sidamon-Eristoff
 Talbott and Carter Simonds Foundation
 Constance G. Spahn
 Dr. Neil Stahl and Dr. Jayne Raper
 Structure Tone
 Mrs. Laurence A. Tisch
 Rosanna Troiano and John Troiano
 West Monroe Partners
 Laura B. Whitman and Thomas C. Danziger
 Rita Wilson and Tom Hanks
 The Donald and Barbara Zucker Foundation, Inc.

CORPORATE AND FOUNDATION MATCHING GIFTS

\$10,000 TO \$24,999

ThermoFisher Scientific

\$5,000 TO \$9,999

AB
 Altria Group, Inc.
 Bristol-Myers Squibb Company
 ExxonMobil Foundation

\$2,500 TO \$4,999

Bank of America
 The Chubb Corporation
 General Electric Industrial Systems
 Goldman, Sachs & Co.
 Google Inc.
 IBM International Foundation

\$1,000 TO \$2,499

Coach
 Disney Worldwide Conservation Fund
 Prudential Insurance Company of America

PLANNED GIVING DONORS (JESUP SOCIETY)

Anonymous (35)
 Mrs. Arlene Abrams
 Ms. Roberta Adelman and Mr. Fred Adelman
 Mr. and Mrs. Leslie Allen
 Dr. and Mrs. Robert A. Altman
 Dr. and Mrs. Sydney Anderson
 Ms. Marcelle Arak
 Dr. Rudolf G. Arndt
 Ms. Robyn J. Asimov
 Mr. and Mrs. Arnold Asrelsky
 Mr. Robert Atwater
 Ms. Patricia Azeltine
 Ms. Ashanda Balderas
 Mr. Frank M. Bamberger
 Ms. Carolina Baron
 Ms. Linda Barrett
 Ms. Helen Baumhofer
 Mr. David Baxter
 Ms. Fern Beckman
 Ms. Joan L. Benson
 The Honorable Lucy Wilson Benson
 Mr. Robert Bethge
 Dr. and Mrs. Donald Blauffox
 Mr. Lynn A. Bohlin
 Mr. and Mrs. Robert Braun
 Ms. Beatrice Brewster
 Mr. Peter Brizard
 Mr. Kenneth A. Bronston
 Mr. and Mrs. Michael Buckner
 Mr. Sherman B. Carll
 Ms. Ann Chambers
 Ms. Carolyn M. Chave and Ms. Chloe Hall
 Ms. Anita Child
 Ms. Winifred C. Chin
 Mr. Leon Choate, Jr.
 Mr. Michael J. Chusmir
 Ms. Margaret Olstad Cleary
 Mr. Donald K. Clifford, Jr.
 Ms. Myrna Coffino
 Ms. Barbara Cohen
 Mr. Theodore Cohn
 Dr. Charles J. Cole and Carol R. Townsend
 Mrs. Marie H. Cole
 Mr. and Mrs. John Colgrove
 Ms. Danica Cordell-Reeh
 Victoria Costa and Jacob Carl Zydney
 Dr. Susan Cropper
 Dr. Virginia L. Cunningham
 Mr. Frank Davanzo
 Mr. and Mrs. James E. Davies

Ms. Carol Davies-Gross and Mr. Abie Gross
 Mr. Anthony Delbove
 Mr. David A. Dorfman
 Mr. Christopher J. Durso
 Mr. Howard Einbinder and Mrs. Jo Ellen Loth
 Marvin W. Ellin
 Dr. Wally B. Elvers and Ms. Lita Elvers
 Mr. and Mrs. Sandor Ezrovics
 Mary Ellen Fahs, PhD.
 Mr. Dennis R. Ferguson
 Ms. Inge Fischer
 Stuart Fischman, Esq.
 Mr. Alan Fleischer and Ms. Martha S. Fleischer
 Ms. Stephanie Fogel
 Mr. John French III
 Eli A. Friedman, M.D.
 Miss Mignon Ganne
 Mr. and Mrs. Brian Gill
 Mr. Roland Ginzel
 Mr. William A. Glaser and Mrs. Gilberte Vansintejan-Glaser
 Mr. Richard Gordon
 Mr. Michael Goudket
 Mrs. Anne Gouldsbury
 Mr. Peter H. Gregson
 Mr. Peter S. Grimes
 Ellen and Lawrence Gross
 Ms. Margaret L. Hagen
 Ms. Jeannette Hanby and Mr. David Bygott
 Mrs. Doris Hansmann
 Ms. Ruth Ann Harnisch and Mr. Bill F. Harnisch
 Ms. Anneliese Harstick
 Dr. and Mrs. Karl A. Hartman, Jr.
 Mr. Roderic Harvey
 Mr. Gregory F. Hauser
 Ms. Susan Heath
 Mr. Walter G. Heid
 Ms. Esther L. Herbert
 Ms. Judith F. Hernstadt
 Mr. Kenneth Heuer
 Mrs. Jennifer Higgins
 Mr. Matthew Higgins
 Mrs. Susan Hochenberg
 Mr. Michael Irwin
 Ms. Margot Jacobs
 Dr. Irma B. Jaffe
 Ms. Marilyn Jaffe-Ruiz and Mr. Victor R. Ruiz
 Mr. and Mrs. Anthony James
 Ms. Dorothy Johnsen
 Mr. Mark W. Jordan and Ms. Cynthia Jordan
 Patricia S. Joseph
 Ms. Helene L. Kaplan
 Marcia Kaplan-Mann
 Suzanne M. Kavetas
 Ms. Belinda Kaye
 Dr. Joan A. Kedziora
 Ms. Latimer Kells
 Mr. and Mrs. Johannes G. Kilian

Ms. Catherine King
 Dr. and Mrs. Thomas C. King
 Edward A. Kirtman and Risa M. Schifter
 Mr. Frederick A. Klingenstein
 Stanley Kottcock
 Janet Kozer
 Mr. Peihua Ku
 Mr. Russell Lee
 Ms. Diane Lefer
 Mr. and Mrs. Will E. Leland
 Ms. Jane A. Levenson
 Sir Julian Edmond Paul Lewison and Ms. Wendy Lewison
 Mrs. George N. Lindsay
 Ms. Catherine Lomuscio and Mr. Frank Lomuscio
 Mr. John Maguire
 Ronnie S. Maibaum
 Dr. Michael Malagold
 Ms. Gretchen Marks
 Ms. Camille Matri and Mr. John Plencner
 Ms. Laura Bemben McCloskey and Mr. Ciaran McCloskey
 Mr. and Mrs. Robert McColough
 Mr. Michael J. McCormick
 Mr. Charles McCown
 Mr. and Mrs. Edward R H McDowell
 Ms. Ann S. McIntyre
 Mr. Charles W. Merrels
 Mr. and Mrs. Scott Messinger
 Ann Breen Metcalfe
 Ms. Payne B. Middleton
 Mr. Maceo W. Mitchell and Ms. Patricia J. Wynne
 Mr. and Mrs. Wayne Mones
 Mr. and Mrs. James E. Moore
 Ms. Mary Murgurdichian
 Mr. and Mrs. Stanley Mull
 Miss Ellen J. Myers
 Ms. Eileen Nemeroff
 Dr. Stephanie Neuman and Mr. Herbert Neuman
 Mrs. Gillian W. Newell
 Mr. Thomas K. O'Brien, Jr.
 Mrs. Theresa Ornstein
 Mr. Jonathan Orser
 Dr. Norman Osofsky and Mrs. Carol Falcetti
 Mr. Michael Pantuliano
 Mr. Michael R. Passarella
 Ms. Maria M. Patterson
 Ms. Celia Paul and Mr. Stephen Rosen
 Ms. Eileen Pentel and Mr. Don Wade
 Mrs. Frank Perdue
 Mr. Stanley Perlman
 Mrs. Gloria K. Rand
 Ms. Gertrude Redmond
 Angela Reich, Ph.D.
 Ms. Pamela Reinertsen and Mr. Arthur Reinertsen
 Ms. Madeleine Richard
 Ms. Gloria Roma
 Ms. Joyce Rosen

Mr. and Mrs. Jeffrey Rothstein
 Mr. Ravi Rozdon
 Ms. Harriette Rubinstein
 Mr. Murray Sackson
 Patricia E. Saigo, M.D.
 Ellen Salem, Ph.D.
 Dr. and Mrs. Michael R. Sanders
 Mr. and Mrs. William F. Sanford, Jr.
 Mr. William Savino
 Mr. Patrick Schaar and Ms. Dorothy Gold
 Ms. Jane Scheiber
 Mr. and Mrs. Patrick Schiavone
 Ms. Christine Schiavone-McKeon
 Mr. and Mrs. Robert Schiffmann
 Ms. Gloria Schindler
 Ms. Nancy Schloss
 Mr. Robert John Schneck and Ms. Cora Fung
 Dr. Margaret Schottstaedt
 Mr. and Mrs. Eric Schraemli
 Mr. and Mrs. Robert L. Schwartz
 Mrs. Lenore Scott
 Mr. Richard Sheridan
 Mr. A. James Smith, Jr. and Ms. M. Kathryn Eickhoff-Smith
 Mr. Ronny Soderstrom
 Dr. Peter M. Som and Ms. Judy S. Som
 Mr. and Mrs. Michael Sommer
 Mr. Mark M. Spradley
 Jeff Spsychala
 Ms. Linda J. Starzman
 Dr. and Mrs. Stuart Steele
 Ms. Jennifer Stevens
 Mr. Mark L. Stevens
 Dr. and Mrs. Martin A. Stolbun
 Mr. Karl J. Stone
 Mr. Joseph M. Sweeney
 Mr. and Mrs. Kenneth L. Telljohann
 Ms. Diann Terry
 Mr. Robert F. Petrie and Ms. Valerie Thaler
 Mr. Christopher Theodor and Ms. Ronetta Blackburn
 Dr. William Thierfelder and Prof. Michael Aloï
 Mrs. Edwin Thorne
 Ms. Irene Toovey
 Ms. Myrella Triana and Mr. Ken Gadow
 Ms. Ellen M. Rosette and Mr. Salvatore Troiano
 Mr. Craig S. Tunks and Mr. Tom Toynton
 Dr. Gretchen Van Alstyne
 Mrs. Helen S. Vishniac
 Ms. Marjory S. Walters
 Ms. Fanny E. Warburg
 Mrs. Isobel Wayrick
 Mr. Marshall M. Weinberg
 Arne Werchick
 Judy and Josh Weston
 Mr. Ronald D. Weston
 Mr. Sidney S. Whelan, Jr. and Ms. Anne S. McCook
 Dr. and Mrs. Donald W. Whipple
 Mr. Thomas C. Danziger and Ms. Laura B. Whitman

Mr. Chester Widomski and Dr. Linda Widomski
 Mr. Gabriel Wiesenthal
 Dr. Adam S. Wilkins
 Ms. Caroline Wilson
 Ms. Betsy Yamazaki
 Ms. Irene Zelnick
 Mr. and Mrs. Eric T. Zinn

ESTATES AND BEQUESTS

Anonymous
 Estate of Melvin Belsky
 Estate of Gene B. Abrams
 Estate of Elizabeth G. Beinecke
 Estate of Margaret D. Bishop
 Estate of Marie Louise Campbell
 Estate of Ruth Dickler
 Estate of Richard Everett
 Estate of Norman Fatley
 Estate of Julius Frazier
 Estate of Edwin F. Gamble
 Estate of Myron Habib
 Estate of Joseph Hammer
 Estate of Ralph E. Hansmann
 Estate of Albert Hartig
 Estate of Georgina M. Hecker
 Estate of Enid Kotschnig
 Estate of Ida R. Kreingold
 Estate of Dolores Kreisman
 Estate of Ann M. Lacy
 The Robert J. Laskowski Foundation
 Evelyn H. Lauder Charitable Lead Trust
 Estate of Hulda G. Lawrence
 Estate of Elizabeth Z. Loos
 Leonard C. Sanford Trust
 Estate of Raymond S. Schullery
 Estate of Joseph Scott
 Estate of John P. Strang



PLANNED GIVING

Promote broader understanding of the natural world for generations to come!

By arranging a planned gift for the American Museum of Natural History, your impact will extend to future generations of children, families, explorers, researchers, and science learners who walk through our doors.

We are honored to recognize those who make bequests and planned gifts to the Museum with a membership in the Jesup Society. With many giving options to choose from, you can select the type of planned gift that best suits your needs.

WAYS TO GIVE:

- **A GIFT IN YOUR WILL**—known as a **BEQUEST**—is the most common way to plan a future gift.
- **BENEFICIARY DESIGNATIONS** on your IRA and 401k accounts keep assets outside of probate and may reduce taxes for your estate.
- Careful **SUCCESSION PLANNING** with an existing donor advised fund or trust is another way to create a future gift without changing your will.
- **LIFE-INCOME ARRANGEMENTS** such as a gift annuity or charitable remainder trust can support the Museum's future while also securing tax benefits and lifetime payments for you and your family.
- **CHARITABLE LEAD TRUSTS** can also be used to pass assets to children or grandchildren in a tax-advantaged way.
- **REAL ESTATE OR BUSINESS INTERESTS**, if properly planned, can make a very tax-wise gift to support the Museum.
- **LIFE INSURANCE DESIGNATIONS** can make a great future gift for the Museum and, depending on the structure, can be a tax-wise option for your family.

For more information, please contact the Planned Giving Office of the American Museum of Natural History, Central Park West at 79th Street, New York, New York, 10024-5192, by phone at 212-769-5119, or by email at plannedgiving@amnh.org.

FUNDING CREDITS

EXPLORE21 EXPEDITION TO CUBA

The Museum's Explore21 Initiative is generously supported by the leadership contributions of Kathryn P. and Thomas L. Kempner, Jr.; Linda R. and William E. Macaulay; and the Stavros Niarchos Foundation.

AMNH-MONGOLIAN ACADEMY OF SCIENCES EXPEDITIONS

The AMNH-Mongolian Academy of Sciences expeditions are generously supported by the Margaret and Will Hearst Paleontological Research Fund.

CONSTANTINE S. NIARCHOS EXPEDITIONS

The 2016 Constantine S. Niarchos Expeditions were generously supported by the Stavros Niarchos Foundation.

RGGS

The Museum expresses its utmost appreciation to Richard Gilder, a steadfast and most generous benefactor and friend whose visionary philanthropy enabled the Museum to establish the Richard Gilder Graduate School.

Additional support for the Richard Gilder Graduate School has been generously provided by the Hess Foundation, Inc.; an anonymous Museum Trustee; the City of New York; Louis V. Gerstner, Jr.; Gerstner Family Foundation; and the Annette Kade Charitable Trust.

MAT PROGRAM

With deepest appreciation, the Museum acknowledges Kathryn W. Davis for her generous founding support of the Master of Arts in Science Teaching (MAT) Program. Leadership support for the MAT program is provided by The Shelby Cullom Davis Charitable Fund.

The MAT program is supported in part by the National Science Foundation under Grant Numbers DRL-119444 and DUE-1340006, and the U.S. Department of Education under Grant Number U336S140026.

URBAN ADVANTAGE

Public support for the Urban Advantage program is provided by the Speaker and Council of the City of New York, and the New York City Department of Education.

MUSEUM EDUCATION AND EMPLOYMENT PROGRAM

The Museum's Youth Initiatives are generously supported by the leadership contribution of the New York Life Foundation.

Additional support is provided by The Peter and Carmen Lucia Buck Foundation.

HACKATHON

The 2016 HACKATHON: HACK THE DINOS is part of BridgeUp: STEM, an initiative educating youth and the public about cutting-edge computing in scientific research and science communication.

BridgeUp: STEM is generously supported by a grant from the Helen Gurley Brown Trust.

NEW SCIENCE, NEW SOLUTIONS

This lecture was generously supported by the Abel Shafer Public Program Fund, a fund created by the Arlene B. Coffey Trust to honor the memory of Abel Shafer.

SCICAFFE

The SciCafe Series is proudly sponsored by Judy and Josh Weston.

ASIMOV

The late Dr. Isaac Asimov, one of the most prolific and influential authors of our time, was a dear friend and supporter of the American Museum of Natural History. In his memory, the Hayden Planetarium is honored to host the annual Isaac Asimov Memorial Debate—generously endowed by relatives, friends, and admirers of Isaac Asimov and his work—bringing the finest minds in the world to the Museum each year to debate pressing questions on the frontier of scientific discovery.

KWANZAA 2015

Support for Kwanzaa 2015: Energize, Recognize! was provided, in part, by the May and Samuel Rudin Family Foundation, Inc.; the Sidney, Milton and Leoma Simon Foundation; the family of Frederick H. Leonhardt; and The Max and Victoria Dreyfus Foundation.

Kwanzaa 2015: Energize, Recognize! was co-presented by Community Works and New Heritage Theatre Group.

The Kwanzaa marketplace was organized by the Harlem Arts Alliance.

Special Thanks: Jazz at Lincoln Center

With special thanks to Whole Foods Market.

MARGARET MEAD FILM FESTIVAL

The Margaret Mead Film Festival is made possible by the New York State Council on the Arts with the support of Governor Andrew M. Cuomo and the New York State Legislature.

Support for the Margaret Mead Film Festival is provided, in part, by the May and Samuel Rudin Family Foundation, Inc.; the Sidney, Milton and Leoma Simon Foundation; and the family of Frederick H. Leonhardt.

PHOTOGRAPHY AND DESIGN

PHOTOGRAPHY

Cover: D. Finnin

Page 2: R. Mickens

Pages 6–7: J. Tseng, K. Zimmer/R. Moller Jensen, SETI Institute/D. Futselaar/F. Marchis, A. Watanabe, M. Tessler, D. Grimaldi/P. Barden, J. Herrera, A. Carvalho, P. Schouten, D. De Franceschi, J. Sparks/D. Gruber/V. Pieribone, J. Sparks/R. Schelly/D. Roje, S. Summerfield

Page 9: R. Mickens, C. Chesek

Pages 10–11: D. Finnin, C. Gleberman, R. Mickens, M. Shanley

Pages 12–13: C. Chesek, D. Finnin, R. Mickens

Page 15: AMNH/S. Thurston

Pages 16–17: R. Mickens

Pages 18–19: NASA/JHUPL/SWRI

Page 34: C. Gleberman

DESIGN

on design, new york city.
www.ond.com

American Museum of Natural History

Central Park West at 79th Street
New York, New York 10024

www.amnh.org