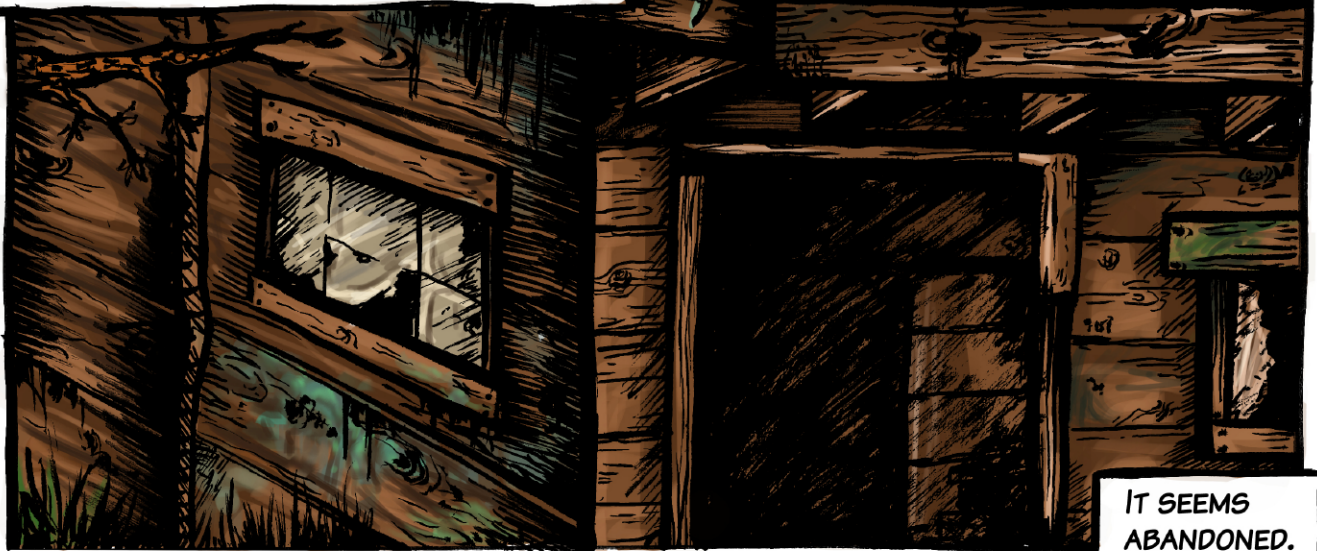


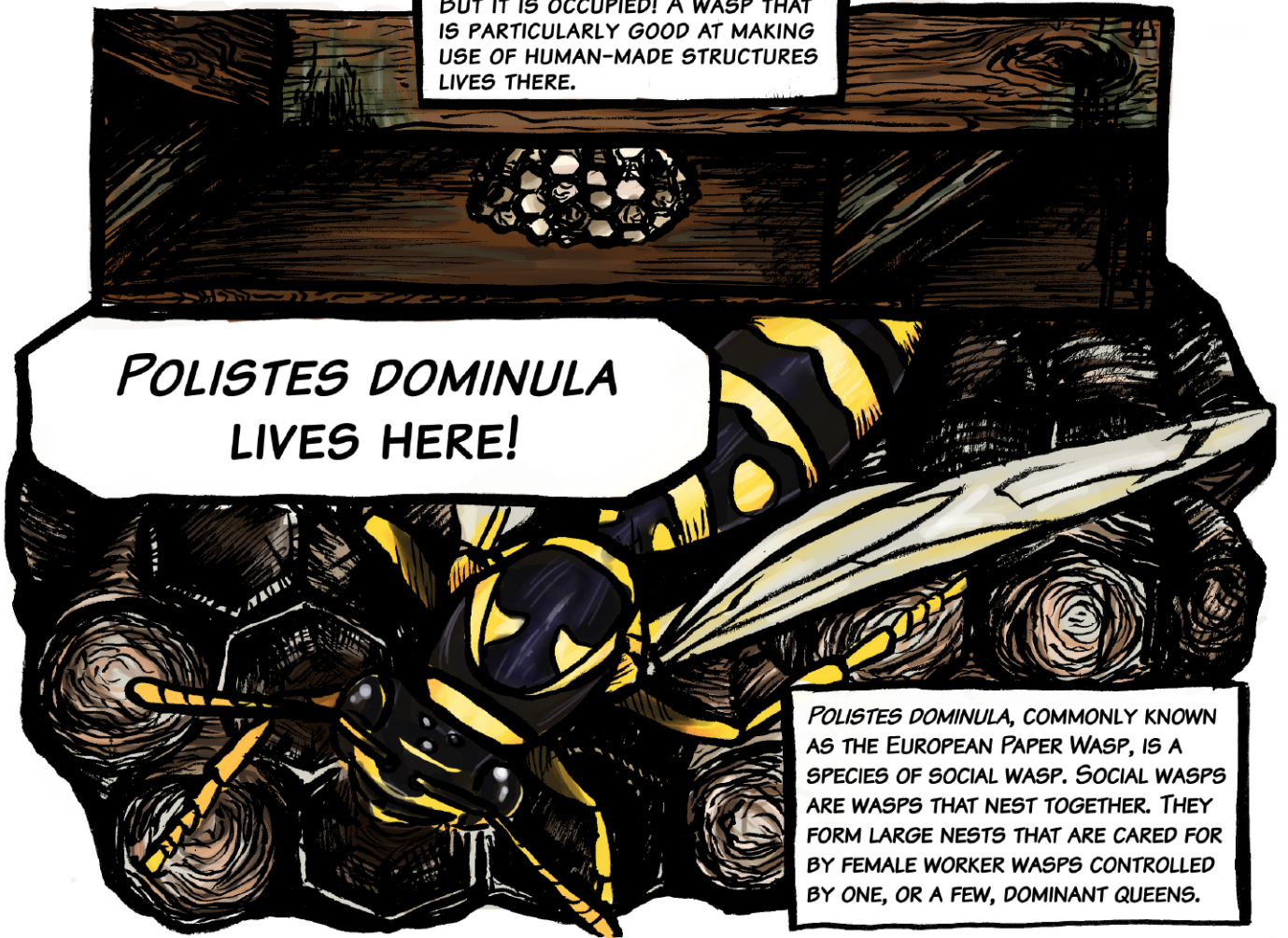
AWAY FROM THE SANDY HILL OF BEMBI'S HOME, THERE IS AN OLD GARDEN SHED AT THE EDGE OF A HOUSING DEVELOPMENT.



IT SEEMS ABANDONED.

BUT IT IS OCCUPIED! A WASP THAT IS PARTICULARLY GOOD AT MAKING USE OF HUMAN-MADE STRUCTURES LIVES THERE.

**POLISTES DOMINULA  
LIVES HERE!**



*POLISTES DOMINULA*, COMMONLY KNOWN AS THE EUROPEAN PAPER WASP, IS A SPECIES OF SOCIAL WASP. SOCIAL WASPS ARE WASPS THAT NEST TOGETHER. THEY FORM LARGE NESTS THAT ARE CARED FOR BY FEMALE WORKER WASPS CONTROLLED BY ONE, OR A FEW, DOMINANT QUEENS.

LIKE ALL SOCIAL WASPS, *POLISTES DOMINULA* IS PROTECTIVE OF ITS NEST AND WILL ATTACK INTRUDERS THAT STRAY TOO CLOSE.



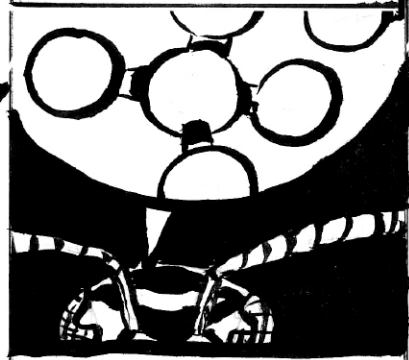
KEEP OUT!

WORKER WASPS CAN IDENTIFY OUTSIDERS BASED ON HOW THEY LOOK, BUT THEY HAVE OTHER METHODS TOO.



I CAN WEAR THIS DISGUISE TO LOOK LIKE A WASP, BUT I ALSO NEED TO SMELL LIKE ONE TOO!

ON THE EXOSKELETON OF *P. DOMINULA* THERE ARE CHEMICALS CALLED HYDROCARBONS, WHICH ARE CARBON MOLECULES WITH HYDROGEN MOLECULES ATTACHED TO THEM.



THESE HYDROCARBONS ARE SPECIFIC TO EACH WASP NEST. SO EVEN WHEN WASPS LOOK THE SAME, THEY CAN TELL WHICH ONES BELONG TO A PARTICULAR NEST.



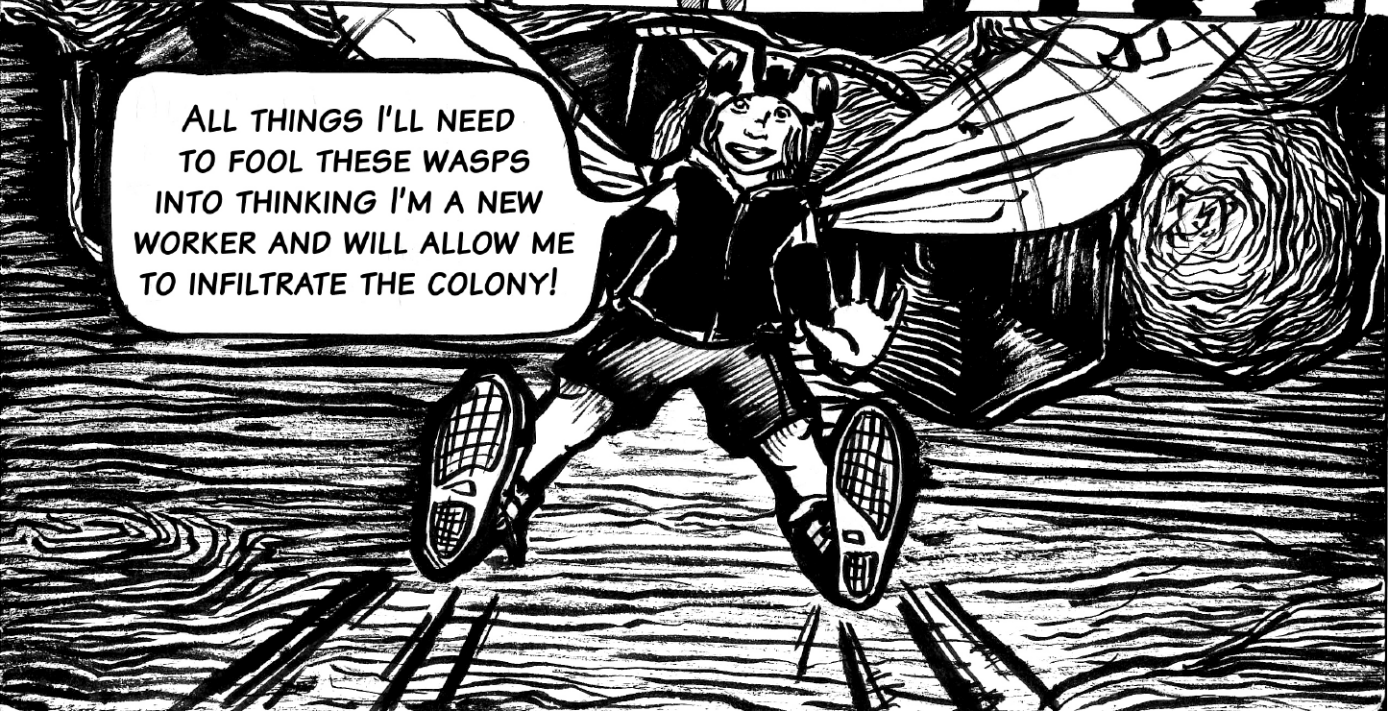
LUCKILY, THIS DISGUISE REEKS OF THESE CHEMICALS



AND COMES WITH WINGS!

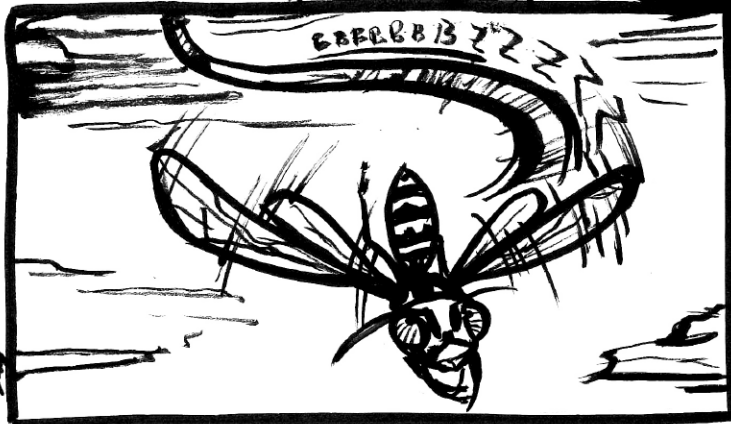
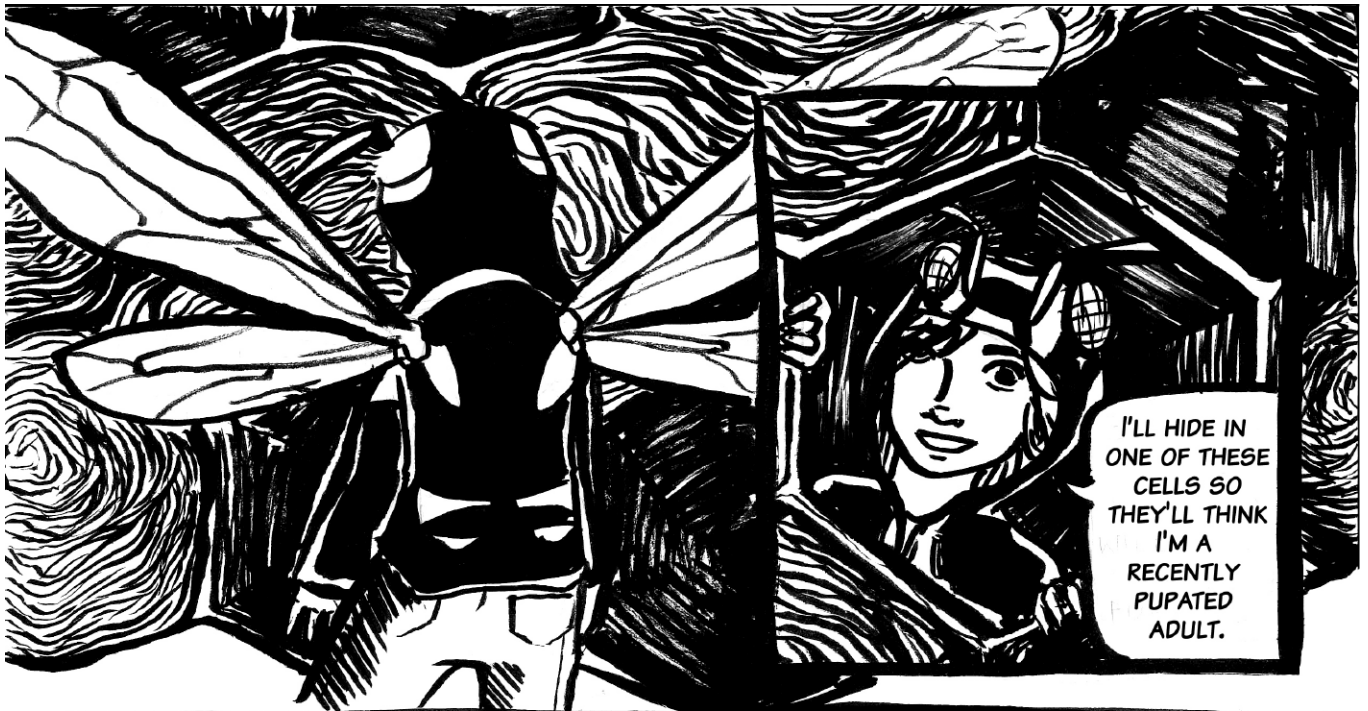


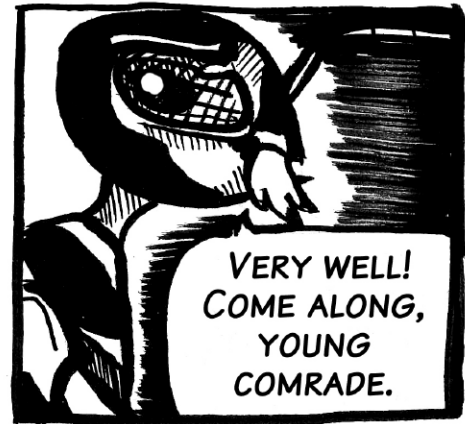
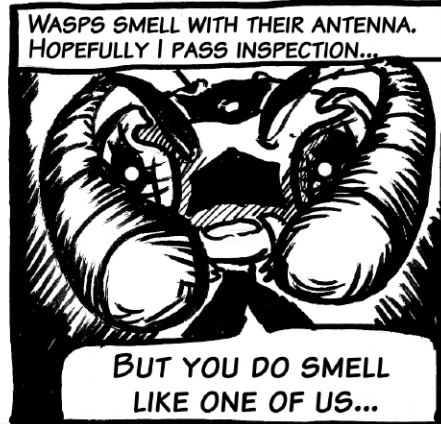
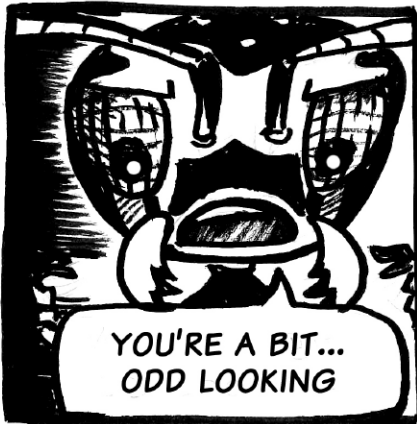
AND SHRINKING ABILITIES!



ALL THINGS I'LL NEED TO FOOL THESE WASPS INTO THINKING I'M A NEW WORKER AND WILL ALLOW ME TO INFILTRATE THE COLONY!

Carly's Adventures in Wasp Land: Issue 3: Social Wasp Undercover





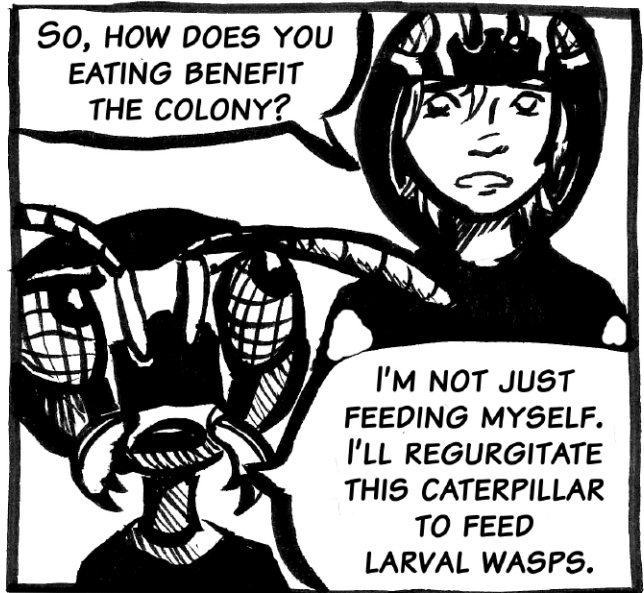
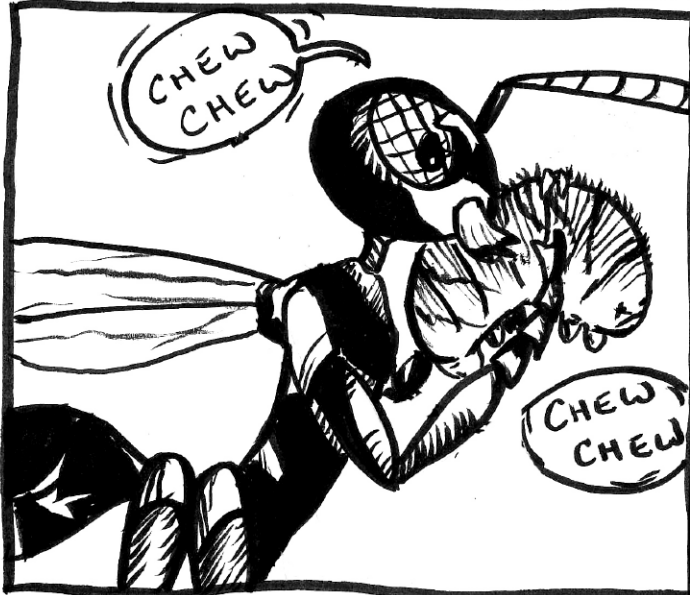
## A BIG FAT CATERPILLAR



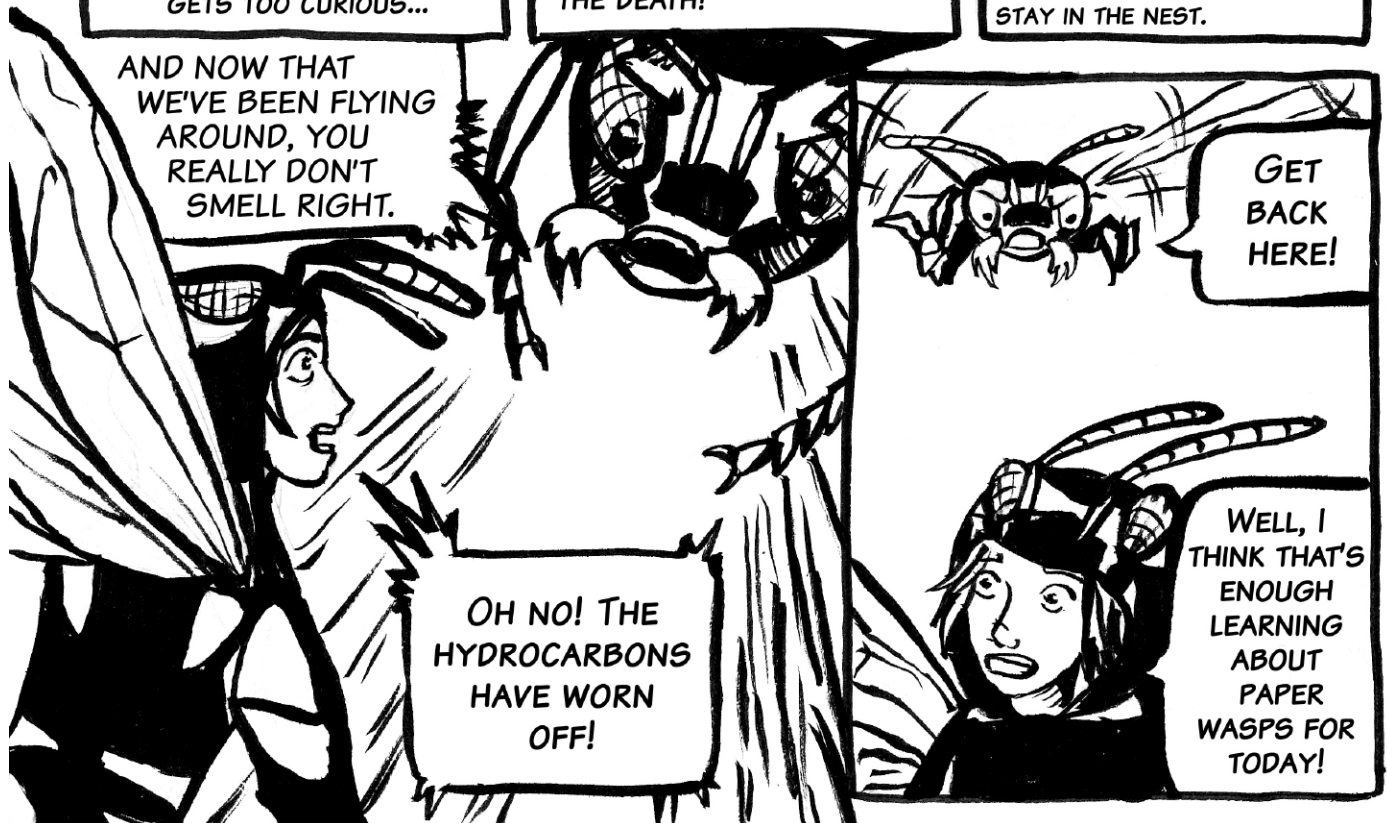
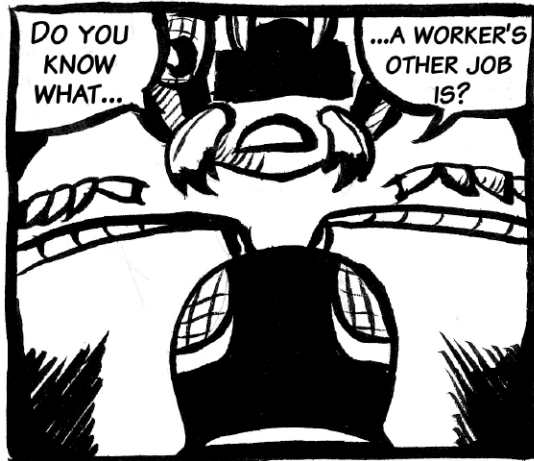
ENTOMOLOGY NOTE! THE  
TOMATO HORNWORM (MANDUCA  
QUINQUEMACULATA) IS A MAJOR  
PEST IN GARDENS AND A  
FAVORITE FOOD OF WASPS.

*John*

Early's Adventures in Wasp Land: Issue 3: Social Wasp Undercover



Early's Adventures in Wasp Land: Issue 3: Social Wasp Undercover



Early's Adventures in Wasp Land: Issue 3: Social Wasp Undercover

