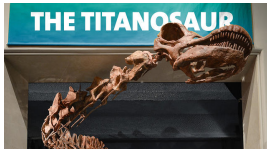


LANG SCIENCE PROGRAM & SCIENCE ALLIANCE PROGRAM

EDUCATION DEPARTMENT



Are you a 5th grader who is really excited about science?
Do you like dinosaurs?
Do you want to meet scientists and visit their labs?
Ever find anything interesting under a rock?
Wonder about giant galaxies?
Curious about how humans evolved?

If the answer is “yes!”, then you should apply to either the Lang Science Program or the Science Alliance Program at the American Museum of Natural History! As a student in either program, the Museum will be your classroom – you’ll learn in the exhibits, visit our collections and labs, and take classes with students who share your passion for science.

The Lang Science Program is a 7-year commitment. Each year, our students meet for 3 weeks in the summer, and 18 Saturdays during the school year. In your middle school years, you’ll cover the basics of the sciences at AMNH, and as you get into high school, you’ll start specializing in those fields of science and topics which you are interested in. You’ll conduct research projects, work with scientists, and also prep for college and career.

The Science Alliance Program is a 3-year commitment. Each year, our students meet for 24 days after school, either on Monday or Friday. You’ll explore the exhibits, meet scientists in their labs and collections, visit the planetarium, explore nature out in Central Park, and more!

BOTH programs are based on bringing AMNH’s sciences to our students – both what is on exhibit, and what research is done behind the scenes. This includes topics in Anthropology (human culture and evolution), Biology (paleontology, vertebrate and invertebrate zoology, conservation, genetics), and the Physical Sciences (Astronomy, Earth, and Planetary sciences). We make extensive use of the Museum’s *33 million objects* in its collection and the 200+ scientists who work here. Students learn not only *about* the sciences, but how to *do* the sciences.

If this sounds exciting to you, keep reading on the other side for detailed information about each program, and about applying!

Applications for both programs will open in early winter. There will also be several information sessions in December. For the most up to date information, please see our websites (listed below). Applications for both programs will be due in 3 stages.

The initial "Part 1" will be due on January 26, 2018.

	Lang Science Program	Science Alliance
Who can apply?	We will accept applications from current 5 th graders (or homeschool equivalent) who live in and/or go to school in the 5 boroughs of NYC.	
When do we meet?	<p>Meets 18 Saturdays (approximately twice per month from October – June) during the academic year, and 3 weeks during the summer. Classes usually run from 10am to 3pm.</p> <p>Required Summer 2018 dates: <i>July 16th – August 3rd</i></p> <p>Special events will be scheduled through the program.</p>	<p>Meets weekly in three 8-week sessions on Mondays or Fridays during the academic year from 4:30-6:30pm</p> <p>Special events will be scheduled throughout the program.</p>
How long is it?	A 7-year commitment through the end of high school.	A 3-year commitment through the end of middle school.
What can you expect?	<p>Courses that:</p> <ul style="list-style-type: none"> • teach science hands-on in fun and authentic ways. • cover the three major fields of science at the Museum (Biology, Physical Science, and Anthropology). • go behind the scenes in which you'll meet working scientists, and see our collections and research tools. • are specially designed around the Museum and the various special exhibits. • go on field trips to research and other institutions in and around NYC. • allow you to design your own research projects. • help you prepare for college and science careers. <p>Families will also be invited to various events throughout the year.</p>	<p>Courses that:</p> <ul style="list-style-type: none"> • teach science hands-on in fun and authentic ways. • cover the three major fields of science at the Museum (Biology, Physical Science, and Anthropology). • go behind the scenes in which you'll meet working scientists, and see our collections and research tools. • are specially designed around the Museum and the various special exhibits. <p>Families will also be invited to various events through the year including <i>Parent University workshops</i> to inform parents about what their child is learning.</p>
What is the cost?	<p>A very generous number of FULL FEE WAIVERS to the program are available, based on self-reported financial need. For those who do not qualify, the full cost of the program is \$2000/year.</p>	
Questions?	<p>Site: www.amnh.org/Lang Email: ApplyToLang@amnh.org Phone: 212-313-7172</p>	<p>Site: www.amnh.org/ScienceAlliance Email: ApplyToSAP@amnh.org Phone: 212-769-5982</p>