

# American Museum of Natural History



Museum Map  
[amnh.org/map](http://amnh.org/map)

## Highlights

There's so much to see in more than 40 halls! Here's a handy list of popular exhibits.

### Floor 4



#### 4 Orientation Center **Titanosaur**

This cast of a juvenile sauropod is 122 feet long! The species, *Patagotitan mayorum*, was discovered in 2014 in Argentina.



#### 4 Vertebrate Origins **Megalodon**

This extinct shark's name means "big tooth." Fun fact: its bite was stronger than *T. rex*'s!



#### 4 Saurischian Dinosaurs **Tyrannosaurus rex**

One of the largest carnivores ever, *T. rex* was discovered on a Museum expedition. This mount, which is about 45 percent fossil, has been on view since 1915, its pose adjusted over time.



#### 4 Ornithischian Dinosaurs **Triceratops**

This famous horned dinosaur, a plant eater, replaced its 144+ teeth two to four times a lifetime.



#### 4 Primitive Mammals **Lestodon**

This giant ground sloth, an extinct mammal from South America called *Lestodon*, is "armored" due to bony plates in its skin.



#### 4 Advanced Mammals **Mammoth**

Larger than its woolly relative, this extinct pachyderm lived in Indiana about 11,000 years ago.

### Floor 3



#### 3 Pacific Peoples **Moai Statue**

This is a cast of a moai on Rapa Nui (Easter Island). The people of Rapa Nui made these stone statues to honor ancestors.



#### 3 Collections Core **Hadrosaur Footprint**

A duck-billed dinosaur likely made this impression pulling its foot out of mud 83–72 million years ago.



#### 3 Reptiles and Amphibians **Komodo Dragon**

One venomous bite from this Indonesian lizard, the biggest and most powerful lizard alive today, can kill its prey!

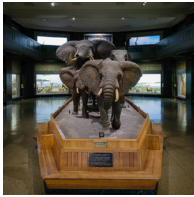
## Floor 2



### 2 Theodore Roosevelt Rotunda

#### *Barosaurus* and *Allosaurus*

This imagined face-off features the world's tallest freestanding dinosaur mount. It's a cast because real fossils are too heavy to position in this way.



### 2 African Mammals

#### African Elephant

African elephants are the largest living land mammals. They live in family groups of 10–20, led by the oldest female.



### 2 African Mammals

#### Gorilla

Carl Akeley planned this diorama in the 1920s to call attention to these extraordinary animals, which were already overhunted.



### 2 Birds of the World

#### King Penguin

King Penguin parents near Antarctica take turns watching over eggs and chicks, carrying them on their feet to protect them from cold.

## Floor 1



### 1 Planet Earth

#### Climate Wall

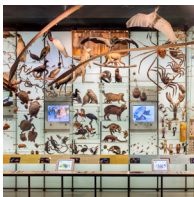
On this dynamic exhibit, data from NASA, NOAA (National Oceanic and Atmospheric Administration), and other sources highlight vital climate indicators and effects of climate change.



### 1 North American Mammals

#### Alaska Brown Bear

In this iconic diorama, hungry bears fresh from hibernation get a welcome salmon, ceded by a sea otter in retreat.



### 1 Biodiversity

#### Spectrum of Life

This exhibit of 1,500 organisms, from amoebas to six-banded armadillos, offers an overview of the amazing diversity of life on Earth.



### 1 Ocean Life

#### Blue Whale

The largest animal ever to live on our planet wasn't a dinosaur—it's the blue whale! This iconic life-size model is 94 feet long.



### 1 Ocean Life

#### Sperm Whale and Giant Squid

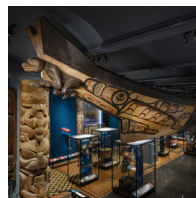
This diorama is a deep-sea encounter humans have not witnessed but deduce from whales' scars and stomach contents.



### 1 North American Forests

#### Giant Sequoia

Felled by loggers in California in 1891, the tree from which this slice was cut grew for more than 1,300 years.



### 1 Northwest Coast

#### Great Canoe

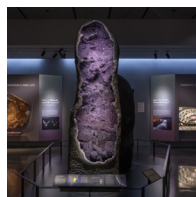
Carved from a single western red cedar tree, this 63-foot canoe shows the work of both Haítzaqv and Haida artists of the Pacific Northwest.



### 1 Human Origins

#### Lucy

Here, visitors can see a cast of the 3.18-million-year-old "Lucy" fossil, which offers evidence that this species of human ancestor walked upright.



### 1 Gems and Minerals

#### Giant Geodes

The crystals in this dazzling pair of geodes took millions of years to turn from colorless quartz to purple amethyst.



### 1 Gems and Minerals

#### Star of India

This is the largest-known gem-quality star sapphire, at just over 563 carats—and it is about 2 billion years old!