

# American Museum of Natural History



Museum Map  
[amnh.org/map](http://amnh.org/map)

## Night at the Museum Self-Guided Tour

See the real exhibits behind the characters featured in the *Night at the Museum* movies!

### Floor 4



4



### Saurischian Dinosaurs

#### *Tyrannosaurus rex*

The fossil skeleton of *Tyrannosaurus rex*, one of the most famous and scientifically important dinosaur specimens in the world, can be found in the Hall of Saurischian Dinosaurs. Unlike **Rexy**, however, this fossil doesn't play fetch!

### Floor 3



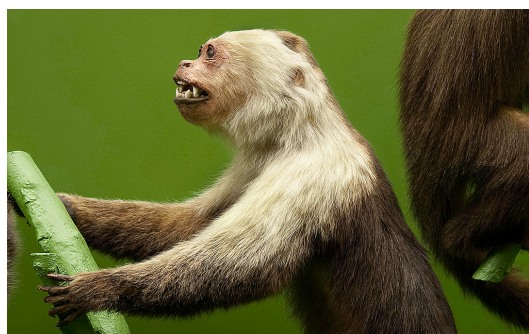
3



### Pacific Peoples

#### Moai Statue

A cast of the Rapa Nui (Easter Island) statue that came to be called **Dum-Dum** is in the Margaret Mead Hall of Pacific Peoples. These remarkable human figures, called moai, were carved out of volcanic rock some 815 years ago.



3



### Primates

#### Capuchin Monkey

The capuchin monkey, which inspired **Dexter**, can be found in the Hall of Primates in the American Monkeys section with its relatives in the genus *Cebus*.

### Floor 2



2



### African Mammals

Off the Theodore Roosevelt Rotunda, African elephants, lions, zebra, and more are in the Akeley Hall of African Mammals. This hall is comprised of 28 habitat dioramas spread across two floors. Find other animals from the movie, like the ostrich and the rhinoceros, on Floor 3.

(Continued on back)



## 1 Ocean Life

### Blue Whale

The 94-foot-long Blue Whale hangs from the ceiling in the Irma and Paul Milstein Family Hall of Ocean Life, which features dioramas of major marine ecosystems.



## 1 Human Origins

### Neanderthals

A diorama of three Neanderthals at a campsite in what is now Western France can be seen in the center, circular area of the Anne and Bernard Spitzer Hall of Human Origins.



## 1 Theodore Roosevelt Memorial Hall

### Theodore Roosevelt

In the Theodore Roosevelt Memorial Hall, dioramas and displays depict the life and career of Theodore Roosevelt, including a bronze statue of the Conservation President, a visionary environmentalist who protected more than 230 million acres of U.S. land. This hall is part of New York State's official memorial to the 26th President of the United States.

## Outside



### Central Park West Façade Lewis and Clark

At the Museum's entrance on Central Park West, to the right of the entry arch, atop Ionic columns, are statues of William Clark and Meriwether Lewis. These statues were sculpted by James Earle Fraser.

Note: Characters from the movies not included in this list were not based on Museum exhibits.